

TRABUCCO REELS: TECHNOLOGY AND DESIGN

The new Trabucco reel's collection include some real jewels from mechanical point of view, with metal bodies highlighting the hi range models on performance side, plus some interesting innovations which are destined to draw the attention. As always, we have spent our best energies to care about design, because we believe that fishing tackle shouldn't just have an utility, but should also be nice. After all, we are Italians, and would like the world to notice it!





The stiffness of reel's structure is very important to allow a smooth rotation of inner gear, because all mechanisms are fitting to the body in many points. A really stiff body offers safe, stable and firm anchorage to internal parts, while a normal one, subject to deformations under load, actually limits their freedom and creates the well known sticky effect which - for too long time - has been regarded as synonymous of quality. The precision and high quality of gears are useless if the body is subject to flex and torque. The same applies to ball bearings: an high number doesn't improve the rotation power if their seat is prone to deformation. That's why more and more Trabucco quality reels are built around a metal body, being it the ultralight magnesium alloy or the versatile and convenient aluminium. The difference is immediately felt during a strong fish fight, as the line is easily retrieved, without forcing with the rod. A totally new mix of emotions, able to change the fishing pleasure and confirm Trabucco brand as one of the most attractive in the world.

THE BODY



Body and rotor fully made of premium quality metal alloys, built to withstand the most challenging situations and to last in time. This technology belongs to top range reels only.



With a specific gravity 20% lower than aluminium and an even higher stiffness, the Magnesium alloy is definitely the most advanced material to produce reel's bodies. Great fashion, but also great performances.



Innovative technology that allowed us to produce fully Carbon Body and rotor, the top you can get in terms of lightness and still able to grant a great resistance to mechanical stress. As per the Metal Body this technology has been used for top range reel only.



Hybrid Body means a body made of aluminium and graphite. The aluminium has the task to withstand the mechanical stress, while the graphite helps to keep the weight as light as possible. Hybrid Body reels can grant you to fish safely and with light equipment.



Innovative material added of uni directional Carbon micro fibres. This technology is the ideal combination between light weight and stiffness. It is naturally corrosion free and we use this material for high performance reels only.



It is the more common material used in the fishing tackle industry for reel building: light weight and reliable. It is anyway a very important step to add an appropriate structural development to get outstanding performance from it. Only a few companies can do it properly.

THE GEARS



GEAR RATIO. It defines the number of revolutions performed by the rotor around the spool for each complete turn of the handle. The larger the first number, the quicker the reel. Obviously the spool's diameter plays an important role: for a correct evaluation we suggest to pay attention to the amount of line recovered per turn of the handle, indicated between brackets in the tables of this catalogue. In general, we recommend fast reels for long distance fishing techniques and slower models where instead more cranking power is requested.

LONG LIFE GEAR

We have to talk about raw materials and in particular metals, because these are at the heart of all the gears. Durability and performance of derive mainly from the quality of the materials involved in the construction of pinions, gears and bearings... for these mechanical parts Trabucco uses only the best quality materials such as bronze and steel... we don't use other materials because only these can provide the reliability standard and resistance that our customers deserve.



BALL BEARING SYSTEM. A well designed mechanic uses only high quality ball bearings to improve the gears motion. The BBS indication on each product, provides the number of the bearings used on the reel. The first figure is the quantity of the ball bearings used, whilst the second is the number of the roller bearing. The roller bearing is one-way only, and it's positioned on the central pinion to force the rotation and prevents the reels from the even the smallest back turn, also known as the "One way clutch". The ball bearings reduce friction of moving parts and the more there are, the better the mechanics work.

PG (PRECISION GEAR)

Are the basis of the mechanical function of our reels. The fluidity and smoothness of rotation that Precision Gears provide is responsible for the speed and above all of the power of the reel. The rotors and the gears of our reels featuring the PG technology are designed using the latest 3D software, thus to guarantee the perfect assembly of every single part to improve efficiency and reduce friction.

After so many years from the date we started to sell our first models, we are still engaged into design and development like it was the very first day. The many innovations that you will find in the new models are the result of assiduous research done on the main characteristics that must have a perfect reel. Our aim is to offer you products that stand out from the crowd for their reliability and performance.

LINE MANAGEMENT SYSTEM

WORM SHAFT GEAR **WSG**

WORM SHAFT GEAR. The worm gear is a double groove engraved into a pinion. In this way the traction is carried with uniformity, reducing friction and giving a smoother retrieve. The Worm Shaft Gear is also reducing line tension, responsible of the oscillations of the spool and so the line winding is perfect.

SOS SLOW OSCILLATION SYSTEM

SLOW OSCILLATION SYSTEM. It is the most evolved line laying system. During the retrieve action the SOS slow down the spool oscillation movement in regard to rotor speed, allowing a more accurate and compact line lay. Looking carefully at the spool you will notice a different speed going from bottom to top and vice versa. This technology, applied on top range reels, always grant a perfect line lay and avoid line wigs when castings.

CX CROSS WINDER

CROSS WINDER. To those fishermen who do not have a complete experience of the art of fishing, which use either mono or braided lines, we recommend to buy a reel with the "cross winder" line spooling system, instead of a reel with the most performing WSG. The spooling is very tidy with Cross Winder, provides good casting distances and reduces the possibility of tangles. The "X" spooling in fact compact lines and allows a best spooling even with lower tensioned mainline.

AS ROLLER ANTITWIST SYSTEM

ANTITWIST SYSTEM. Traditional line rollers force tension on to the line at every turn of the handle and this can cause line tangles. All our reels nowadays are fitted with the new Anti twist line roller together with WSG and SOS systems to avoid this problem and also extending the life of even the lightest of the monofilaments.

POWERBAIL

TUBULAR BAIL. In several models, we introduced a aluminum tubular bail that is larger than traditional ones. Although larger, these new bails are lighter and more durable than traditional. Due to their special shape and the innovative conical joint, they drive automatically monofilament inside the line roller even when the nylon is not perfectly under tension.

ROTOR STOP SYSTEM

Even in the highest quality reels sometimes during the cast the bail arm can accidentally close. With this new locking system, fitted onto the rotor, this risk has been almost completely eliminated. The angler is advised by an audible click that the bail arm is locked correctly.

VIBRATION DAMPER

AVS ANTI VIBRO SYSTEM

ANTI VIBRO SYSTEM. We asked our designers the challenge to minimize or even cancel the vibrations emitted by reels during the recovery phase. Thanks to the new 3D software, they have been able to design well balanced rotors (Super Balance System) but for top range reels we wanted something more. We focused on the stabilization of the gears and the subsequent cancellation of the games that swing the spool. The result is excellent, the pinion holds the spool firmly on its axis and this does not oscillate even when drag is in traction. We are particularly pleased with the results ... You just have to try.

SBS Super Balance System

SUPER BALANCE SYSTEM. This new technology is obtained just using the latest computers 3D softwares, which allows the designing and later the construction of perfectly balanced rotors without the addition of external weights. The resulting balance reduces any vibrations of the reel during the recovery. All our reels are designed using these softwares and deeply tested before the production, and you'll find at least the SBS system across the whole range.

ANTIREVERSE SYSTEM

ONE WAY CLUTCH

ONE WAY CLUTCH (INFINITE ANTI-REVERSE). Anti-reverse system in use in most of our reels. Thanks to a lever usually located above or below reel body you can plug or unplug the operation of the one-way roller bearing that holds the main shaft and provides an excellent infinite anti-reverse performance, with our One-Way Clutch system you'll find absolutely zero free-play on the handle.

MULTI STOP SYSTEM

MULTI STOP SYSTEM (ANTI-REVERSE). On reel that's not possible to fit the infinite antireverse and therefore is not used the one-way roller bearing, we have designed an effective alternative system to block the rotor motion. The Multi Stop System slows down the rotor sequentially in several key points when rotates in the opposite direction to that of the line winding.

SEA FISHING TECHNOLOGIES

SWR SALT WATER RESISTANT

SWR (SALT WATER RESISTANCE). A construction technology applied to the reels dedicated to saltwater fishing and who affects all the metal parts (making them unassailable by salt, UV and temperature), all the seals (to prevent the sea water comes into contact with the mechanics, with special O-ring were sealed all possible splits), and even the mechanical parts (suitably enhanced depending on the type of prey that you want to capture and type of technique fishing must be adopted).

DRAG SYSTEM

MICROMETRIC DRAG

The drag is a device whose operation depends from the friction generated by mechanical rubbing between the brake washers that make up the brake system. The drag power is determined by the number of the washers, their diameter and the material they are made. Its power is directly proportional to the number of washers and their diameter. The most used washers on our range are made PTFE coated (felt discs in PTFE based oil bath), while the more expensive reels feature carbon cloth washers, that provides even higher performance. The drag quality is primarily determined by its smoothness, drag must operate smoothly even under high pressure. Another point is the micro adjusting, which means that to each click of the knob must be corresponding into a micro increase or decrease of the power. The Trabucco reels stand out because of the high drag power and the excellent progression of the drag.

FAST PLAY DRAG

Brand new drag system featuring a dual-presetting mode that incorporates in one single device all the free runner drag facilities. It acts directly into the spool, allowing to have a more direct, progressive and fine tuning drag system. The free spool setting is regulated by the inner knob, while to switch to the combat drag is enough to half turning the main drag knob.

FREE RUNNER

When this device entered carp fishing with such force it revolutionised the sport to such an extent it became essential. It is now also much favoured in other freshwater and saltwater applications. The free runner lever situated on the back of the body allows the angler to switch from the pre-tensioned drag for fish playing to the "free" position, and back again easily. On our reels all the Free Runner reels features oversized washers to always guarantee a good control and smoothness.

MAX DRAG (DRAG BRAKING POWER)

Only in the Top Range reels, the most expensive and mainly dedicated to the sea fishing, which shows the MAX DRAG power. Carefully measured and expressed in kgs, the real drag power is calculated during the traction with disks fully engaged. Warning, drag must operate during the calculation of the Max Drag, if the disks are blocked the Max Drag increases, but the drag is not working properly and the measurement is invalid. For Trabucco Max Drag means real drag braking power.

LINE'S MANAGEMENT



V-SPOOL DESIGN. The V-Spool Design spools reduce the friction between the line and the lip during the cast, reducing the number and the diameter of the coming out coils and thus reducing dramatically the risks of tangles when using braided lines. The lower friction make your casts longer and more accurate too, improving your fishing experience and extending the life of your spooled line.



CNC MACHINE CUT ALUMINIUM SPOOL
Top range reels feature spools tooled "bleed" from one piece of solid aluminum. The CNC machine lathe ensures a complete perfection of shape, the maximum smoothness of the line during casting, exceptional tensile strength, pressure and any other force exerted. CNC aluminum spool are extremely lightweight but yet offer the highest structural resistance to impact and abrasion.



SUPERLIGHT SPOOLS. On medium range reels, just to contain the final cost, we preferred to fit graphite spool instead of the metal. The graphite is a rugged and lightweight material, it is often used for the construction of the reels bodies and thanks for his technical / structural well-suited features is perfect for the construction of the spools. The reels have been equipped with a graphite spool are marked on the box with Superlight logo.



SPARE SPOOLS. Trabucco gives you the chance to duplicate and even triplicate the spools of the reel you have purchased. Many of our models have one or more spare spools in order to give the buyer the opportunity to load lines of different diameters, or braided or nylon. By doing so you can fish with a single reel in many ways or with different techniques. The number shown in the logo indicates the number of spare spools the reel comes with.



SWT (SALT WATER TREATED). The SWT (Salt Water Treated) is a recent manufacturing process, less efficient if compared to the SWR but still allowing using the reel in salt water for a long time without any corrosion risk. Under strong loads and in tough conditions, typical of salt water game, the SWT does not add any weight to the whole reel. This new manufacturing process is using special hi tech varnishes and it used on all the parts sensible to salt, making them even harder. In a nut shell this procedure will not only make your reel salt water resistant but just more resistant to all solicitations.

INVICTUS

ENJOY THE
POWER OF
TECHNOLOGY

Advanced metal alloys and high modulus carbon: only handle's knob is made from traditional material! But high grade materials can do little if there isn't the right technology to draw the best from them, and in this case plenty of it has been employed. Just a couple of handle turns, with a fighting beast at the other end of your line, will let you feel the extreme power which is hidden inside your Invictus.



The spool's lip is remarkably thin and "V" shaped to minimize line friction during the cast and to increase distances and accuracy (V Spool Design).



The line roller is designed to avoid line torque at each handle's turn, so that line will flow smoothly and last longer (Anti Twist System).



In order to ease the control of the operations during the fight with powerful fish, the Invictus 5000 has been designed with a rubber "T" shape handle knob.



The ultra-thin grooves we can see through a lens prove that the spool has actually been machined from a solid piece of aluminium for higher strength.

INVICTUS

The Invictus reel is just the last in time of this state of the art projects and is featuring many technologic innovations. The hybrid structure is made of aluminium and graphite to maximize the benefits from both materials: the body is made of aluminium, so really really stiff. For this reason all the gears are working in the perfect position and will do it for years. The rotor, made of carbon, is suffering less sollicitations and so it is made of lighter material. The rotor is equipped with a thick hollow bail arm, super strong and impossible to deform. The reel comes with two aluminium spools, both machined from a single aluminium piece. One of the two has been designed for monofilament and it is high capacity, while the other, designed for braided lines, is shallower and features a rubber band to prevent the braided

sliding. The lip of both spools is built with an angle, giving birth to the V-Spool Design, a solution that allows the line to come out easier and increasing casting distance. Drags are made of stainless steel and carbon discs and are sealed, to prevent dirty and salt to enter between the discs. The handle too is machined from a single piece of aluminium. 9+1 stainless steel double shielded bearings make this reel really smooth. The Invictus has a ratio of 5.2:1 and it is suitable for bolo and waggler fishing in sizes 2500 and 4000, while it is perfect for spinning and feeder fishing in sizes 4000 and 5000. The gears have been designed to bear thousands and thousands of casts and retrieves.

FEATURES:

- Super stiff aluminium body
- Aluminium side cover
- Ultralight carbon rotor
- Aluminium hollow bail
- Anti-twist Titanium line roller
- Main deep aluminium spool (on twin BB)
- Spare match aluminium spool, featuring a rubber band to avoid braided lines slipping under extreme tension
- Sealed drag to avoid water, salt and dust getting inside
- Stainless steel main shaft
- Infinite anti-reverse
- Stainless steel double shielded ball bearings
- CNC handle, machine cut from a single piece of solid aluminium



The high capacity spool has parallel grooves in the throat, which are intended to give a correct start to line's spooling. That's why the spool's label must always be removed!



The spare spool has a reduced capacity to ease thin line's loading. The central rubber band is there to avoid braided line's slipping under extreme pulls.



All ball bearings are sealed on both sides to keep grease inside and avoid water, sand and salt getting in and possibly affecting their rotation.



On each side of the body there are two steel plates, which are destined to raise stiffness along handle axis. The positive effect is easily felt during a fish fight.



The reel's structure is an hi-tech "full metal", as both body and side cover are made from aluminium to offer the best possible stiffness and durability.



On right, the Invictus rotor is made from high modulus carbon, the stiffest and lightest among the materials which can bear enormous load and stress. Its essential design is not only a fantastic fashion detail, but plays an important role on balance and rotation smoothness points of view. As a matter of fact, its lightness pushes back the reel's barycentre, while reducing the energy needed to cause the rotation. The computer drew it asymmetric in order to counterbalance the bail's weight, thus optimizing the rotation's smoothness of the whole reel.

Code	Model	Wt	Gear Ratio	Spool Capacity	Max Drag	Extra Sp.	B.B.
033-98-250	2500	275	5.2:1 (76 cm)	Ø 0.26 mm - 200 m	7.3 kg	1	9+1
033-98-400	4000	310	5.2:1 (84 cm)	Ø 0.28 mm - 260 m	10 kg	1	9+1
033-98-500	5000	330	5.2:1 (88 cm)	Ø 0.31 mm - 250 m	10 kg	1	9+1
033-98-251	Alum. Spare Spool 2500 - Deep			Ø 0.26 mm - 200 m			
033-98-252	Alum. Spare Spool 2500 - Match			Ø 0.20 mm - 100 m			
033-98-401	Alum. Spare Spool 4000 - Deep			Ø 0.28 mm - 260 m			
033-98-402	Alum. Spare Spool 4000 - Match			Ø 0.20 mm - 150 m			
033-98-501	Alum. Spare Spool 5000 - Deep			Ø 0.31 mm - 250 m			
033-98-502	Alum. Spare Spool 5000 - Match			Ø 0.26 mm - 130 m			

VIRTUS



NEW VIRTUS

A mix of experiences and technologies has given life to this high profile project, marked above all by the quality of materials and performance. From the fantastic series Invictus and Maniac it took the metal body, the basic premise to provide a smooth rotation even under heavy load and offer great durability, the handle that operates directly on the drive gear, the ball bearings shielded on both faces and the sealed drag with carbon discs. From XPlore SW-H reel comes the fantastic spool design, with hexagonal windows to make the skirt lighter and beautiful. From match experiences of feeder fishing it took the rubber band, located in the spool's core to prevent the braided lines from slipping under extreme pulls. Finally, the Virtus has been enriched by two round line clips, which allow the feeder expert to feed and fish at two different distances, a strategy needed to succeed in most match situations.

FEATURES:

- 9 Precise Double-Shielded Stainless Steel Ball Bearings
- Stainless Steel One Way Clutch Instant Anti-Reverse Bearing
- Stainless Steel Main Shaft & Main Gear Shaft
- Full Metal Body
- Aluminium Match Spool with rubber band to avoid braided line's slipping under strong pull
- Front Drag with Stainless Steel & Carbon Textile Washers
- Fully sealed Drag (100% Water & Dust Proof)
- Positive-Screw-Lock CNC Handle & Fighting Knob
- Large Diameter Aluminium Powerball, with Anti-Twist Titanium Line Roller
- Twin Ball Bearing Spool



A soft rubber band prevents braided lines from slipping under strong pulls, while the two line clips, round shaped and spring loaded, are vital for feeder fishing.



Two stylish plates made of carbon and steel, stiffen the body on both sides.



The handle operates directly on to drive gear, avoiding any power loss. The handle can be fold down in order to limit the reel's volume during transport.



Code	Model	Wt	Gear Ratio	Spool Capacity	Max Drag	Extra Sp.	B.B.
034-16-200	2000	250	5.2:1 (68 cm)	Ø 0.20 - 100 m	7.3 kg	-	9+1
034-16-250	2500	290	5.2:1 (76 cm)	Ø 0.20 - 120 m	7.3 kg	-	9+1
034-16-400	4000	320	5.2:1 (84 cm)	Ø 0.20 - 150 m	10 kg	-	9+1
034-16-500	5000	345	5.2:1 (88 cm)	Ø 0.20 - 180 m	10 kg	-	9+1
034-16-201	Aluminium Spare Spool 2000			Ø 0.20 - 100 m			
034-16-251	Aluminium Spare Spool 2500			Ø 0.20 - 120 m			
034-16-401	Aluminium Spare Spool 4000			Ø 0.20 - 150 m			
034-16-501	Aluminium Spare Spool 5000			Ø 0.20 - 180 m			

ELEGANCE, FINENESS AND EFFICIENCY

NEW XSENSE

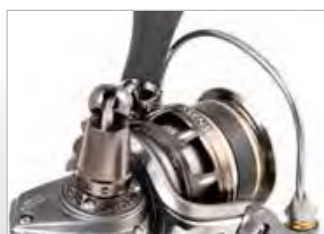
A great display of style, aesthetic taste and design, which hits the senses with its elegance and sophisticated colour combinations, with the metallic champagne, delicate tones of brown and fine gold trims. But such grace hides a Formula One engine, with stainless steel drive gear and pinion gear, plus double shielded ball bearings to keep out dust and saltwater, and an handle directly cranking on drive gear to avoid power waste. Everything set in a very light yet rigid metal body, able to maintain the alignments of the main axes even during the retrieve of an important fish, ensuring absolute fluidity and long life to the reel. In combination with spinning rods, Bolognese or the lake trout rods it is capable of surprising any user with its mechanical efficiency, allowing the use of braided lines thanks to the rubber band that prevents line slipping inside the spool.



The carbon and stainless steel disks drag is able to develop a tremendous power, and, at the same time, dissipate the heat generated under heavy load.



The handle is directly connected to the drive gear in order to transfer 100% of power, with no dispersion nor vibration.



The handle arm can be folded down to reduce volume during transport or to easily store the rod into the holdall.

Code	Model	Wt	Gear Ratio	Spool Capacity	Max Drag	Extra Sp.	B.B.
034-17-200	2000	240	5.2:1 (68 cm)	Ø 0.20 - 100 m	7.3 kg	-	9+1
034-17-250	2500	280	5.2:1 (76 cm)	Ø 0.20 - 120 m	7.3 kg	-	9+1
034-17-400	4000	310	5.2:1 (84 cm)	Ø 0.20 - 150 m	10 kg	-	9+1
034-17-500	5000	340	5.2:1 (88 cm)	Ø 0.20 - 180 m	10 kg	-	9+1
034-17-201	Aluminium Spare Spool 2000			Ø 0.20 - 100 m			
034-17-251	Aluminium Spare Spool 2500			Ø 0.20 - 120 m			
034-17-401	Aluminium Spare Spool 4000			Ø 0.20 - 150 m			
034-17-501	Aluminium Spare Spool 5000			Ø 0.20 - 180 m			

FEATURES:

- 9 Precise Double-Shielded Stainless Steel Ball Bearings
- Stainless Steel One Way Clutch Instant Anti-Reverse Bearing
- Stainless Steel Main Shaft & Main Gear Shaft
- Full Metal Body
- Aluminium Match Spool with rubber band to avoid braided line's slipping under strong pull
- Front Drag with Stainless Steel & Carbon Textile Washers
- Fully sealed Drag (100% Water & Dust Proof)
- Positive-Screw-Lock CNC Handle & Fighting Knob
- Large Diameter Aluminium Powerbail, with Anti-Twist Titanium Line Roller
- Twin Ball Bearing Spool



MANIAC

Thanks to the structure made from aluminum, the Maniac offers an amazing display of strength and lightness that has already charmed many match and lake trout anglers because the retrieve of the fish takes place smoothly, without forcing the user to "pump" with the rod. The shallow spool features a rubber band which prevents the entire package of fishing line to slip under traction, a frequent risk in case of use of braided lines. Three available sizes allow to equip with perfect balance a vast panorama of rods; size 5000 proves perfect for feeder match fishing, where the possibility to reach very long distances is the discriminating factor in the last hour of the match which divides winners from losers. The shielding of ball bearings and sealing of clutch box prompt Maniac to sea fishing as well.

FEATURES:

- Hi-Tech metal body
- CNC carved aluminium spool (shallow match type)
- Hollow Power Bail with Anti Twist line roller
- Carbon and steel disks drag
- Sealed stainless steel ball bearings
- Infinite Anti-reverse



POWERBAIL



CXV CROSS WINDER

Code	Model	Wt	Gear Ratio	Spool Capacity	Max Drag	Extra Sp.	B.B.
034-11-250	2500	280	5.2:1 (76 cm)	Ø 0.205 mm - 120 m	7.3 kg	-	9+1
034-11-400	4000	315	5.2:1 (84 cm)	Ø 0.205 mm - 150 m	10 kg	-	9+1
034-11-500	5000	332	5.2:1 (84 cm)	Ø 0.260 mm - 130 m	10 kg	-	9+1
034-11-251	Alum. Spare Spool 2500			Ø 0.205 mm - 120 m			
034-11-401	Alum. Spare Spool 4000			Ø 0.205 mm - 150 m			
034-11-501	Alum. Spare Spool 5000			Ø 0.260 mm - 130 m			



Maniac is prepared for sea fishing, and for such reason the drag box is sealed by a soft rubber lining which avoids water, sand and salt getting inside. Of course, it's highly recommended to wash the reel under tap water after each fishing session.



The Maniac drag box include a set of high technology disks, with same style of big game multipliers. The alternation of steel and carbon elements provides power, smoothness and heat dispersion for safe and comfortable control of the fish run.

The handle operates directly on to the drive gear. This solution is the best one for integral power transmission, because energy generated during retrieve is not dispersed through plays and vibrations. For transport, the handle can be fold down to reduce the volume of the reel.



NEW SHARP

In modern reels, the spool is not only the soul of the tool, but also draws the attention of designers, because its influence on the overall look is very strong. Today, in fact, the reel must be pleasant to own and show all the others as a sign of personal taste. It's the case of Sharp, displaying a particularly stylish spool, characterized by diagonal scratches that can be realized only with the computer's assistance. The black colour rubber band is destined to disappear under the line, because it has been designed to prevent the braided line from slipping when subjected to extreme traction. During the rotation, the handle shaves the bail arm with absolute precision, because it has been shaped to keep his centre of gravity as close as possible to that of the body, thus reducing the oscillations. The metal body encloses a top quality engine, to locate the Sharp series with full rights in the elite of Trabucco range.

FEATURES:

- 9 Precise Double-Shielded Stainless Steel Ball Bearings
- Stainless Steel One Way Clutch Instant Anti-Reverse Bearing
- Stainless Steel Main Shaft & Main Gear Shaft
- Full Metal Body
- Aluminium Match Spool with rubber band to avoid braided line's slipping under strong pull
- Front Drag with Stainless Steel & Carbon Textile Washers
- Fully sealed Drag (100% Water & Dust Proof)
- Positive-Screw-Lock CNC Handle & Fighting Knob
- Large Diameter Aluminium Powerball, with Anti-Twist Titanium Line Roller
- Twin Ball Bearing Spool



POWERBAIL



CXV CROSS WINDER

Code	Model	Wt	Gear Ratio	Spool Capacity	Max Drag	Extra Sp.	B.B.
034-18-250	2500	300	5.2:1 (76 cm)	Ø 0.20 mm - 120 m	7.3 kg	-	9+1
034-18-400	4000	330	5.2:1 (84 cm)	Ø 0.20 mm - 150 m	10 kg	-	9+1
034-18-500	5000	350	5.2:1 (88 cm)	Ø 0.20 mm - 180 m	10 kg	-	9+1
034-18-251	Aluminium Spare Spool 2500			Ø 0.20 mm - 120 m			
034-18-401	Aluminium Spare Spool 4000			Ø 0.20 mm - 150 m			
034-18-501	Aluminium Spare Spool 5000			Ø 0.20 mm - 180 m			



AIRMAG



If light weight is nice, then for sure the Airmag is beautiful! Featuring a super light weight magnesium body and a carbon rotor, the Airmag is the candidate to become the perfect reel to match with high end bolo rods and top class match rods. The tubular aluminium bail arm is super light as well. The main spool is made from cold forged aluminium and equipped with a super smooth drag, featuring stainless steel

and carbon washers. The newly designed handle is very light and extremely stiff. To stay on light weight concept, even the spare spool is super light, being made from graphite. We also need to highlight the high speed ratio 6.0:1. Speed, light weight and smoothness, these 3 peculiarities make the Airmag the best reel for competition. The 7+1 bearing are made from stainless steel and double shielded, so you can use your Airmag during your next vacation on the sea!

FEATURES:



- Ultralight yet stiff Magnesium alloy body
- Superlight carbon rotor
- Aluminium Longcast main spool
- Graphite spare spool
- Aluminium hollow bail



- Sealed drag with carbon disks
- Sealed stainless steel ball bearings
- Infinite anti-reverse
- Aluminium handle

POWERBAIL AVS ANTI-TWIST SYSTEM ROLLER ANTI-TWIST SYSTEM ONEWAY CLUTCH CX CROSS WINDER BMDY

Code	Model	Wt	Gear Ratio	Spool Capacity	Max Drag	Extra Sp.	B.B.
033-97-300	3000	245	6.0:1 (85 cm)	Ø 0.16 mm - 100 m	6.5 kg	1	7+1
033-97-400	4000	250	6.0:1 (94 cm)	Ø 0.20 mm - 100 m	6.5 kg	1	7+1



Magnesium body

- Same stiffness of aluminium
- 20% lighter!



XENOS cx

A really nice reel which combines the excellent gearing quality to a sporting, young design. The ultralight body helps reducing weight without missing stiffness, thanks to the advanced engineering of the structure. The rotation's smoothness is coming from 9 stainless steel high precision double shielded ball bearings and the stainless steel one way clutch. The spool is itself an hybrid, aluminium/carbon in this case, and it is really light. The spooling is just perfect, thanks to the S-Curve System that spread homogeneously the line with a slow oscillation. The final hybrid part is the custom handle: stainless steel/carbon with EVA knob. The brilliant Xenos is not an hybrid though: it is 100% quality only.

FEATURES:

- Ultra Light CX Carbon Body
- Hybrid aluminium/carbon main spool
- Graphite Extra Sp.
- Double Shielded SS Long Life Ball Bearings
- Instant anti-reverse system
- Titanium Line Roller



- Carbon Cover Drag Knob
- Hybrid Carbon SS Handle
- X-Power Drive
- Eva ergonomic handle knob

POWERBAIL AVS ANTI-TWIST SYSTEM ROLLER ANTI-TWIST SYSTEM ONEWAY CLUTCH CX CROSS WINDER

Code	Model	Wt	Gear Ratio	Spool Capacity	Extra Sp.	B.B.
033-89-400	4000	265	5.0:1 (80 cm)	Ø 0.25 mm - 220 m	1	9+1

XPLORE MATCH

In 2014 Trabucco presented the Xplore reel and if you are expert and passionate anglers and now you are not using one, that means you are part of a minority or that you missed a super performing reel. In 2015 Trabucco presents the Match version of the Xplore, designed for competition anglers. The Xplore Match is a reel designed for the competition and features super smooth gears and low capacity spool, designed to be filled with the right quantity of monofilament. It fits bolo, match, trout and light feeder rods. The 2000 size is perfect for light bolo and light match rods and has a capacity of 100 m of 0.20 mm line. The 4000 size is fitting most of the match rods and has a capacity of 120 m of 0.26. Finally the 5000 size is perfect for feeder fishing, with a capacity of 130 m of 0.26 mm. The latter model spool is wider and so it is better for long distance casting. The super smooth gears are supported by 9+1 stainless steel double shielded bearings.

XPLORE



FEATURES:

- Extra tough body and rotor
- V-shaped aluminium spool
- Aluminium hollow bail
- Sealed drag
- Double shielded stainless steel ball bearings
- Infinite anti-reverse
- CNC machine cut handle made from a solid piece of aluminium



Folding handle

In order to reduce the reel's volume, when the rod is being stored in the holdall, the handle can be fold down towards the body.

Code	Model	Wt	Gear Ratio	Spool Capacity	Extra Sp.	B.B.
033-91-250	2500	270	5.2:1 (76 cm)	Ø 0.20 mm - 100 m	-	9+1
033-91-400	4000	290	5.2:1 (84 cm)	Ø 0.26 mm - 120 m	-	9+1
033-91-500	5000	300	5.2:1 (88 cm)	Ø 0.26 mm - 130 m	-	9+1
033-91-251	Alum. Spare Spool 2500			Ø 0.20 mm - 100 m		
033-91-401	Alum. Spare Spool 4000			Ø 0.26 mm - 120 m		
033-91-501	Alum. Spare Spool 5000			Ø 0.26 mm - 130 m		

XPLORE



The design of a new reel model requires long times and when in the end we come to the final product we always feel satisfied. When we finished the Xplore project the satisfaction was really huge because we thought to have achieved a result that far exceeded our initial expectations. The Xplore is just the reel we all fell in love with and we are sure that everybody will test it, then will show the same feeling. The extra stiff graphite body includes a heart made of powerful and reliable stainless steel gears supported by 9+1 premium quality bearings, also them made of stainless steel and double shielded for protection for dirty and water. The aluminium spool features a V shape lip for easier line casting and includes a sealed drag with oversized stainless steel and carbon washers. This solution is perfect for a smoother drag with no initial momentum. The positive screw aluminium handle is adding precision and it is equipped with a non-slip high density EVA knob. Available in sizes from 3000 to 5000. We are sure this model will have a great success cause of its versatility and its undisputed quality.

FEATURES:

- Stainless Steel Main Shaft & Main Gear Shaft
- Stainless Steel One Way Clutch
- Double Shielded SS Long Life Ball Bearings
- Aluminium spool with holes
- Twin Ball Bearing Spool
- Micro-Adjusting Front Drag With Stainless Steel And Carbon Textile Drag Washers
- Fully sealed Drag
- Positive-Screw-Lock CNC Handle & Fighting Knob
- Titanium Line Roller
- Aluminium handle directly connected to drive gear



Code	Model	Wt	Gear Ratio	Spool Capacity	Extra Sp.	B.B.
033-85-300	3000	270	5.2:1 (78 cm)	Ø 0.235 mm - 240 m	-	9+1
033-85-400	4000	290	5.2:1 (84 cm)	Ø 0.260 mm - 290 m	-	9+1
033-85-500	5000	300	5.2:1 (88 cm)	Ø 0.285 mm - 290 m	-	9+1
033-85-301	Alum. Spare Spool 3000			Ø 0.235 mm - 240 m		
033-85-401	Alum. Spare Spool 4000			Ø 0.260 mm - 290 m		
033-85-501	Alum. Spare Spool 5000			Ø 0.285 mm - 290 m		

NEW LANCER CX-QUICK RELEASE

It is an evolution of the Lancer HS, series kissed by success in the areas of match and feeder fishing, from which it takes the most important specification, the oversized spool that allows you to cast very far. But it is the spool itself to carry innovations, with a quick release front button that simplifies spool's replacement (QR = Quick Release Spool) and with the twin line clips, round, spring loaded and equipped with a protective cushion, which prevents the line from coming in contact with the metal of the spool's skirt. The presence of the second line clip is much appreciated by feeder anglers, because it allows them to be accurate on two different fishing lines. The fantastic "total black" look, which also involves the bail arm and handle, is made even more aggressive and sporty by a few fine red profiles.

FEATURES:

- 9 stainless steel ball bearings, sealed both sides
- 1 roller bearing (Infinite Antireverse)
- Ultralight and stiff CX carbon body
- Oversized rotor, computer balanced
- S-Curve oscillation system
- Micro adjustable front drag with oversized disks
- Titanium plated Anti Twist line roller
- Stainless Steel main shaft
- Aluminium bail with oversized diameter
- Aluminium Match spool with Quick Release System
- Twin round line clip, spring assisted
- Aluminium CNC handle with EVA knob



The button located on top of front drag knob enables to quickly release the spool and replace it with another one.



Each spool features two line clips



Code	Model	Wt	Gear Ratio	Spool Capacity	Extra Sp.	B.B.
034-14-450	4500	290	5.0:1 (86 cm)	Ø 0.30 mm - 195 m	-	9+1
034-14-550	5500	315	5.0:1 (90 cm)	Ø 0.35 mm - 200 m	-	9+1
034-14-451	Alum. Spare Spool 4500			Ø 0.30 mm - 195 m		
034-14-551	Alum. Spare Spool 5500			Ø 0.35 mm - 200 m		

LANCER HS

Latest generation spinning reel with super compact carbon body, very light but powerful and strong. The CNC machined aluminium long cast spool has a very large diameter to allow longer and more accurate casting. The main shaft is bigger than usual to support the increased turning mass while the titanium coated line roller dissipates more efficiently both the heat and the line twists. The reel is super smooth thanks to the premium quality of the 9 double shielded stainless steel ball bearing and the one way clutch. The drag is micro adjusting at the most precision level thanks to the huge diameter drag washers. It is available in 4500 and 5500 sizes.



FEATURES:

- Advanced design oversized aluminium spool
- Ultra Light CX Carbon Body
- Double Shielded Stainless Steel Long Life Ball Bearings
- Titanium Line Roller
- Carbon Cover Drag Knob
- Aluminium handle
- Eva ergonomic handle knob



Code	Model	Wt	Gear Ratio	Spool Capacity	Extra Sp.	B.B.
033-88-450	4500	295	5.0:1 (86 cm)	Ø 0.30 mm - 195 m	-	9+1
033-88-550	5500	320	5.0:1 (95 cm)	Ø 0.35 mm - 200 m	-	9+1
033-88-451	Alum. Spare Spool 4500			Ø 0.30 mm - 195 m		
033-88-551	Alum. Spare Spool 5500			Ø 0.35 mm - 200 m		



AIR BLADE



WHEN
LIGHTNESS IS
THE NORM

AIRBLADE

Nowadays it is quite hard to show something really new. But we strongly believe the Airblade Pro will be able to amaze, surprise and make many anglers fall in love with it. It is a brand new concept that requested a wide variety of new technologies and knowledge to create it. And each single innovation has been carried to increase your fishing experience. The body is a mono piece of spacecraft metallic alloy 7075 hosting the whole gears ensemble. Sides are part of the main body and so there are no gaps between main body and side plates and consequently no screws on the body of the reel! Therefore, all this is a kind of one-piece ensemble that can be lubricated through a special lower port, the unique way to get in. And what about measurements? The critical point of every reel is the oscillation gear, that specific part that under different commercial names is responsible of the line lay. This is usually the thicker part of every reel on the market.

But the Airblade is only 12 mm thick in that position. Just Incredible! No other words to define that. The whole body is so thin and innovative, and all the gears, rotor, bail arms and everything else is made of the same special space grade metallic alloy, getting 2 results: to have a durable and super light weight reel (only 260 grams on size 4000). Beside this, a reel with so many (actually every) metallic parts can be cosmetized in thousands of ways, just anodizing those parts. The reel is very smooth, using 7 super high quality ball bearing and one way clutch.



FEATURES:

- Super Light Rotor - Using spacecraft materials, the rotor is now lighter and tougher.
- Innovative One Touch Handle- EVA covered balanced handle knob made from ABS shock resistant material.
- No gaps between side covers and no screws on exterior parts.
- Ultra Slim spacecraft metal body, lighter but stronger than graphite. All gears are protected by a single super resistant shell.
- Easy maintenance. Lubricating has never been so easy. Access from back part of the reel.



Code	Model	Wt	Gear Ratio	Spool Capacity	Extra Sp.	B.B.
033-70-200	2000	244	5.1:1 (67c m)	Ø 0.20 mm – 150 m	-	7+1
033-70-300	3000	250	5.1:1 (72 cm)	Ø 0.25 mm – 175 m	-	7+1
033-70-400	4000	260	5.1:1 (83 cm)	Ø 0.30 mm – 125 m	-	7+1
033-70-201	Alum. Spare Spool 2000			Ø 0.20 mm – 150 m		
033-70-301	Alum. Spare Spool 3000			Ø 0.25 mm – 175 m		
033-70-401	Alum. Spare Spool 4000			Ø 0.30 mm – 125 m		

The wide success of Air Blade concept has given the start to a revolutionary new model which offers all the advantages of "free runner" system, without the negative aspects due to weight and volume of the gears intended to manage it.



NEW AIRBLADE FREE SPOOL

At first sight, it's a brilliant front drag reel; lightweight, wide spool, ultraslim metal body, smooth rotation, precise bail trip, perfect drag function, one touch folding handle. But an accurate inspection tells you that the spool's skirt must play an unusual role, because it's free from spool's structure and can be manually rotated to engage the free runner mechanism. What does it mean? The free runner system is, practically, a bit loose second drag, which leaves the spool free to turn and give line to the fish, so that it can develop the first run without any risk for the hooklink. The light drag tension is important to avoid backlash, which would be inevitable in case of total spool's freedom. When the user decides to start line retrieve, he must simply push forward the handle by one quarter of turn: in this way, the free runner is automatically disengaged and main drag gets into play, of course at level previously set by the user. A click sound informs that free runner system is off, and the fun

starts! Big fish are of course the main target of this reel: carp, barbel, mullet, seabass and sea bream, which fall to the bait carried by float or feeder rig presented through definitely finer hooklinks, as the line now gets the protection from Trabucco free runner!



The spool's skirt is milled to provide enough grip to user's fingers. A slight clockwise rotation puts main drag off and makes the free running system start, while a click sound confirms that everything is ok.

FEATURES:

- Ultraslim body made from spacecraft metal alloy
- No screws on exterior parts
- Superlight rotor made from spacecraft metal alloy
- Aluminium spool
- Titanium Line Roller
- Free Runner system
- Infinite anti-reverse
- Aluminium one touch folding handle



After a few centimetres of handle rotation, the free runner system is automatically disengaged, and main drag system gets into play, of course at level previously set by the user at the start of fishing session.

The free runner system fitted on new Air Blade FD is quite efficient, because it works right in the heart of the reel, exactly on the big roller anti-reverse bearing. No power dispersion means superior smoothness, specially in the vital moment of first fish run!

Code	Model	Wt	Gear Ratio	Spool Capacity	Extra Sp.	B.B.
033-72-400	4000	280	5.1:1 (83 cm)	Ø 0.25 mm - 210 m	-	7+1
033-72-401	Alum. Spare Spool 4000					

SKORPION



Strong and accurate: these are two of the main specifications of a Skorpion. The body is made from aluminium and the rotor is made from light weight graphite. Due to this construction, the body is really stiff and all the inner gears will always work perfectly, even under heavy load. The spool is made from cold forged aluminium, while the handle is made from machine cut aluminium. The spooling is perfect due to the Worm Shaft Gear. The Skorpion comes with a second graphite spool having same capacity of the main one. The 7+1 bearings are stainless steel Long Life quality.

FEATURES:

- Hybrid body made from aluminium and graphite
- Ultralight aluminium main spool
- Graphite spare spool
- Hollow bail with anti twist line roller
- Micro-adjustable drag with oversized washers
- Long Life stainless steel ball bearings
- Infinite anti-reverse
- Worm shaft system for a perfect line lay
- Power Fight aluminium handle with EVA knob



POWERBALL



The infinite anti-reverse system works thanks to this oversized roller's bearing.



A lot of slim holes make the aluminium spool lighter and nice.

Thanks to its special design, the worm shaft is responsible of perfect line lay on reel's spool, with neat angles between each coils. As a consequence, the casting distance is improved, due to easier line flow. This important part is hidden in the Skorpion's body.



Code	Model	Wt	Gear Ratio	Spool Capacity	Extra Sp.	B.B.
034-12-200	2000	290	5.2:1 (72 cm)	Ø 0.20 mm - 230 m	1	7+1
034-12-400	4000	365	5.2:1 (82 cm)	Ø 0.20 mm - 285 m	1	7+1

VERTEX



Family of front drag reels fully built in aluminium, with extremely tough and reliable body. This reel can actually stand the toughest fights. Main spool and handle arm are also made from aluminium. This compact reel is really handy and suited for predator fishing, especially with live bait. Its strength points are, besides the full metal body, the power drag and the low gear ratio. Gears are extremely smooth, thanks to seven

stainless steel ball bearings and the one way clutch. An extremely rugged reel with top precision gear.

FEATURES:

- Aluminium & graphite Hybrid body
- Aluminium main spool
- Double Shielded SS Long Life Ball Bearings
- Titanium Line Roller
- Carbon Cover Drag Knob
- Infinite anti-reverse
- Aluminium handle



POWERBALL



Code	Model	Wt	Gear Ratio	Spool Capacity	Extra Sp.	B.B.
033-68-400	4000	290	5.0:1 (72 cm)	Ø 0.25 mm - 200 m	-	7+1
033-68-600	6000	410	4.6:1 (84 cm)	Ø 0.35 mm - 200 m	-	7+1

FIRESTAR



Firestar is yet another reel exploiting the same hybrid body technology, taking the advantage of both aluminium and graphite. The foot and the frame of this reel are aluminium made, while all the other parts are graphite made. The tubular bail arm is made of aluminium too. Both the main spool and the handle are made of machined cut aluminium. The drag is one of the strong points of this reel, featuring oversized washers able to disperse heat and to be regulated with great accuracy.

A spare graphite spool comes inside the

box. The powerful gears work with remarkable smoothness cause of 5+1 Long Life stainless steel bearings.

FEATURES:

- Hybrid body made from aluminium and graphite
- Ultralight aluminium main spool
- Graphite spare spool
- Hollow bail with anti twist line roller
- Micro-adjustable drag with oversized washers



- Long Life stainless steel ball bearings
- Infinite anti-reverse
- Power Fight aluminium handle with EVA knob



Code	Model	Wt	Gear Ratio	Spool Capacity	Extra Sp.	B.B.
033-95-300	3000	285	5.1:1 (67 cm)	Ø 0.22 mm - 160 m	1	5+1
033-95-400	4000	330	5.1:1 (74 cm)	Ø 0.25 mm - 150 m	1	5+1



NEOX

It is not easy to find a family of reels that can be able to fit such a large number of different fishing techniques as the Neox family does. Available in 4 sizes and equipped with top level technical features, this 2015 news from Trabucco will make a name of itself, doesn't matter which fishing technique involved. Hybrid body, that is aluminium made foot and frame, graphite side plates and rotor, to lower the overall weight without affecting the overall stiffness: this is the secret. The aluminium spool has been widely perforated to lower the weight too. A spare graphite spool is available inside the trading box. The aluminium handle is longer than usual, to get extra cranking power. The drag is very smooth and can be calibrated with great accuracy. The smoothness of the gears is supported by 9+1 Long Life stainless steel bearings placed in the higher friction points.

FEATURES:

- Hybrid body made from aluminium and graphite
- Ultralight CNC aluminium main spool
- Graphite spare spool
- Hollow bail with anti twist line roller
- Micro-adjustable drag with oversized washers



- Long Life stainless steel ball bearings
- Infinite anti-reverse
- Power Fight aluminium handle



Code	Model	Wt	Gear Ratio	Spool Capacity	Extra Sp.	B.B.
033-78-200	2000	250	5.1:1 (63 cm)	Ø 0.20 mm - 195 m	1	9+1
033-78-300	3000	285	5.1:1 (66 cm)	Ø 0.25 mm - 245 m	1	9+1
033-78-400	4000	300	5.1:1 (72 cm)	Ø 0.30 mm - 195 m	1	9+1
033-78-600	6000	400	5.1:1 (86 cm)	Ø 0.50 mm - 155 m	1	9+1





LEXAN

Entirely made of extra stiff graphite, the Lexan is a reel available in 3 sizes and that can be used in a variety of situations and fishing techniques. Spool and handle are made of machined cut aluminium. The smoothness is very good, thanks to the use of 5+1 Long Life stainless steel bearings. The Lexan is a superior performance reel that is offered at a very convenient price.



FEATURES:

- Graphite body
- Ultralight CNC aluminium main spool
- Graphite spare spool
- Hollow bail with anti twist line roller
- Micro-adjustable drag with oversized washers
- Long Life stainless steel ball bearings
- Infinite anti-reverse
- Power Fight CNC aluminium handle



Code	Model	Wt	Gear Ratio	Spool Capacity	Extra Sp.	B.B.
034-13-200	2000	260	5.5:1 (76 cm)	Ø 0.20 mm - 230 m	1	5+1
034-13-400	4000	315	5.2:1 (81 cm)	Ø 0.30 mm - 175 m	1	5+1
034-13-600	6000	415	5.2:1 (93 cm)	Ø 0.45 mm - 140 m	1	5+1



EXXON

If you are searching for a small sized body reel that is still able to face challenging fishing techniques, then the Exxon is for sure the best choice you can do. To get an optimal compromise between light weight and stiffness, we built the Exxon with hardened graphite. The super light main spool is made of cold forged aluminium, while the spare spool is graphite made. Spooling is one of the strong points of this reel, and you can use very thin lines without getting any problem. The machined cut aluminium handle, together with the 5+1 Long Life stainless steel bearings, complete the equipment of this reel that can be used for Bolognese fishing and for light and ultra light spinning.

FEATURES:

- Super stiff hi-tech graphite body
- Ultralight aluminium main spool
- Graphite spare spool
- Hollow bail with anti twist line roller
- Micro-adjustable drag with oversized washers
- Double shielded stainless steel ball bearings
- Power Fight aluminium handle



Code	Model	Wt	Gear Ratio	Spool Capacity	Extra Sp.	B.B.
033-94-200	2000	260	5.1:1 (62 cm)	Ø 0.20 mm - 140 m	1	5+1
033-94-300	3000	295	5.1:1 (64 cm)	Ø 0.20 mm - 200 m	1	5+1
033-94-400	4000	315	5.1:1 (72 cm)	Ø 0.25 mm - 150 m	1	5+1

US3 ULTRA SLIM BODY DESIGN

NEW MITO SRX



Series that picks up the heredity of the lucky Mito XTC, whose white livery has got wide approval by anglers from all over Europe. But it was not only a matter of dress, because the mechanism and components have satisfied everybody with their quality and durability, even in case of heavier jobs at sea. Today the project has evolved, including a highly innovative spool, characterized by an oversized diameter that brings several advantages. First of all, the line coils are less in number and larger than usual, with great benefits in terms of casting distance; the upper lip of the spool is easily reached by the finger of the hand that rules the output of the line in preparation for the casting, and when fishing running waters with Bolognese style; the drag start is more immediate, because the lever arm exerted by the line on the braking disks is longer.

OVERSIZED SPOOL DESIGN



FEATURES:

- 5 Long Life Ball Bearings
- 1 Roller Bearing
- One Way Clutch System
- Micro-adjusting Front Drag With Oversized Washers
- CNC Machine Cut Long Cast Superlight Aluminium Spool (Oversized Design)
- Graphite Spare Spool
- Anti Twist Line Roller
- Power Fight Aluminium Handle
- Soft Touch Ergonomic Handle Knob



POWERBAIL



AS ROLLER
ANTITWIST SYSTEM

ONEWAY CLUTCH

US3 ULTRA SLIM BODY DESIGN



Code	Model	Wt	Gear Ratio	Spool Capacity	Extra Sp.	B.B.
034-05-200	2000	270	5.1:1 (72 cm)	Ø 0.20 mm - 300 m	1	5+1
034-05-300	3000	300	5.1:1 (75 cm)	Ø 0.25 mm - 265 m	1	5+1
034-05-400	4000	320	5.1:1 (80 cm)	Ø 0.30 mm - 250 m	1	5+1
034-05-600	6000	430	5.1:1 (91 cm)	Ø 0.40 mm - 240 m	1	5+1

WINDLEX



Aggressive look and high technology in the same reel, this is the Windlex, a reel offering a great value for the money. The super smooth gears are hosted inside a super stiff graphite body and supported by 5+1 Long Life stainless steel bearings. Such a configuration is pretty unusual for this price point. The high quality handle is aluminium machined cut and it is longer than usual, to add cranking power to the already powerful gears. The tubular bail arm is sturdy and stress resistant. A spare graphite spool is available inside the trade box.

FEATURES:

- Super stiff hi-tech graphite body
- Longcast CNC aluminium main spool
- Graphite spare spool
- Hollow bail with anti twist line roller
- Micro-adjustable drag with oversized washers
- Long Life stainless steel ball bearings
- Infinite anti-reverse
- Power Fight aluminium handle with Soft Touch knob



POWERBAIL



AS ROLLER
ANTITWIST SYSTEM



US3 ULTRA SLIM BODY DESIGN



Code	Model	Wt	Gear Ratio	Spool Capacity	Extra Sp.	B.B.
033-93-200	2000	265	5.1:1 (62 cm)	Ø 0.20 mm - 140 m	1	5+1
033-93-300	3000	305	5.1:1 (64 cm)	Ø 0.22 mm - 160 m	1	5+1
033-93-400	4000	335	5.1:1 (72 cm)	Ø 0.25 mm - 150 m	1	5+1



NEW NITRO FC-X



Series designed with an essential, classic shape, neatly marked by the new Trabucco oversized spool. The wizard touch? No, just the application of a known concept, which rarely found practical realization. The amplification of the casting performance was achieved at the engineering stage without affecting the reel with redundant weights, because the rotor has maintained the traditional dimensions. All important advantages will be noticed by those who love the light and medium spinning, Bolognese style and the allround Telematch rods, as they will note larger and sweet line coils slide smoothly through rod's guides. The spool's skirt sees its diameter shrink dramatically, until it nearly touches the rotor, to impress you with its elegance and to reduce the risk of line tangles just below the spool.

Metal line clip, same as fitted on top range reels.

FEATURES:

- 5 Long Life Ball Bearings
- 1 Roller Bearing
- One Way Clutch System
- Micro-adjusting Front Drag with oversized washers
- CNC Machine Cut Long Cast Superlight Aluminium Spool (Oversized Design)
- Graphite Spare Spool
- Anti Twist Line Roller
- Power Fight Aluminium Handle
- Soft Touch Ergonomic Handle Knob



Code	Model	Wt	Gear Ratio	Spool Capacity	Extra Sp.	B.B.
034-06-200	2000	270	5.1:1 (72 cm)	Ø 0.20 mm - 210 m	1	5+1
034-06-400	4000	320	5.1:1 (82 cm)	Ø 0.25 mm - 200 m	1	5+1

OVERSIZED SPOOL DESIGN



NEW ARROW GT

OVERSIZED SPOOL DESIGN



Series made from graphite to provide ultralight reels, set up with a machined aluminum long cast spool to ensure high strength, durability and elegance, also thanks to trapezoidal windows cut into its skirt. Those facing long walks in the mountains, hunting for trout in the streams, will appreciate the compactness of size 2000, lightweight, perfect

for casting to the medium-short distances with lead, float or lure. Those who prefer fishing in the lakes or rivers of the open country with the Bolognese, feeder rod or medium class spinning will find that 4000 is their size, with a large spool to generate gentle loops of line that will quickly flow through the rod's guides. The matt black design, with a shiny detail in contrast, is particularly charming and modern.

FEATURES:

- 5 Long Life Ball Bearings
- 1 Roller Bearing
- One Way Clutch System
- Micro-adjusting Front Drag With Oversized Washers
- CNC Machine Cut Long Cast Superlight Aluminium Spool
- Graphite Spare Spool
- Anti Twist Line Roller
- Power Fight Aluminium Handle
- Soft Touch Ergonomic Handle Knob



Code	Model	Wt	Gear Ratio	Spool Capacity	Extra Sp.	B.B.
034-07-200	2000	270	5.1:1 (72 cm)	Ø 0.20 mm - 195 m	1	5+1
034-07-400	4000	310	5.1:1 (82 cm)	Ø 0.30 mm - 195 m	1	5+1

OVERSIZED SPOOL DESIGN



NEW REIZ XT



During the first presentation made at show-room, it had been instinctively placed among the most valuable series, but when its price has been announced, no one wanted to believe it: the Reiz series is far from expensive. Good news for lovers of lake trout fishing, who can buy a wide range of reels without investing a fortune, relying on size 2000 for close-in fishing with lead sinkers, glass sinkers and lead chains, on 3000 for the medium size bombardas and size 4000 for great distances and considerable depth fishing. Compared to the traditional sizes, the scale has

changed, because Reiz fit the new oversized design spool. The size 6000 completes the series with a reel destined to heavy spinning or boat fishing.

FEATURES:

- 5 Long Life Ball Bearings
- 1 Roller Bearing
- One Way Clutch System
- Micro-adjusting Front Drag With Oversized Washers
- CNC Machine Cut Long Cast Superlight Aluminium Spool
- Graphite Spare Spool
- Anti Twist Line Roller
- Power Fight Aluminium Handle
- Soft Touch Ergonomic Handle Knob



Code	Model	Wt	Gear Ratio	Spool Capacity	Extra Sp.	B.B.
034-08-200	2000	270	5.5:1 (70 cm)	Ø 0.20 mm - 300 m	1	5+1
034-08-300	3000	300	5.1:1 (72 cm)	Ø 0.25 mm - 265 m	1	5+1
034-08-400	4000	320	5.1:1 (82 cm)	Ø 0.30 mm - 250 m	1	5+1
034-08-600	6000	430	5.1:1 (91 cm)	Ø 0.40 mm - 240 m	1	5+1

OVERSIZED SPOOL DESIGN



NEW DYNAMIC XTC FD

Developed to offer the benefits of the oversized spool to a wide audience, this series is part of a specially wide program, which includes the front and rear drag series, coordinated in features and components, as well as in cosmetics. The front drag series consists of six sizes, able to cope with almost all uses in sport fishing, in fresh water or at sea. Despite the price is really interesting, the spool is machined from a block of aluminum to ensure high strength. Just look at the spool through a good magnifying glass to clearly see the micro-grooves left by the tool that digs into the metal to carve the spool. An element that significantly raises the reel's value.



FEATURES:

- 2 Long Life Ball Bearing System
- 1 Roller Bearing
- One Way Clutch System
- CNC Machine Cut Long Cast Superlight Aluminium Spool (Oversized Design)
- Graphite Spare Spool
- Balanced Handle with Soft Ergonomic Knob
- Anti Twist Line Roller
- Micro-Adjusting Front Drag



Code	Model	Wt	Gear Ratio	Spool Capacity	Extra Sp.	B.B.
034-22-100	1000	260	5.5:1 (78 cm)	Ø 0.20 mm - 195 m	1	2+1
034-22-200	2000	270	5.5:1 (81 cm)	Ø 0.20 mm - 230 m	1	2+1
034-22-300	3000	310	5.2:1 (83 cm)	Ø 0.25 mm - 215 m	1	2+1
034-22-400	4000	330	5.2:1 (91 cm)	Ø 0.30 mm - 175 m	1	2+1
034-22-500	5000	410	5.2:1 (95 cm)	Ø 0.35 mm - 195 m	1	2+1
034-22-600	6000	450	5.2:1 (101 cm)	Ø 0.45 mm - 140 m	1	2+1

KRONOS XT

From ultralight spinning to bolognese, from waggler to feeder fishing, this nice reel series gets everybody happy with its fantastic quality/price ratio, which gave it a strong popularity and wide diffusion in Italy as well as abroad. In Italy the cosmetic and design are always first elements of evaluation, while in the central Europe the strength and performances are taken into serious consideration, and also on such front the Kronos XT offers the best that money can buy. The Kronos XT features 5 ball bearing + one way clutch. The aluminium spool has a tapered profile, allowing longer casts. The aluminium handle grants great cranking power and extra reliability. The icing on the cake is a superior drag system, really smooth, usually found only on much much more expensive reels.

FEATURES:

- Graphite body
- Ultralight aluminium main spool
- Graphite spare spool
- Hollow bail with anti twist line roller
- Micro-adjustable drag with oversized washers
- Long Life stainless steel ball bearings
- Infinite anti-reverse
- Aluminium handle



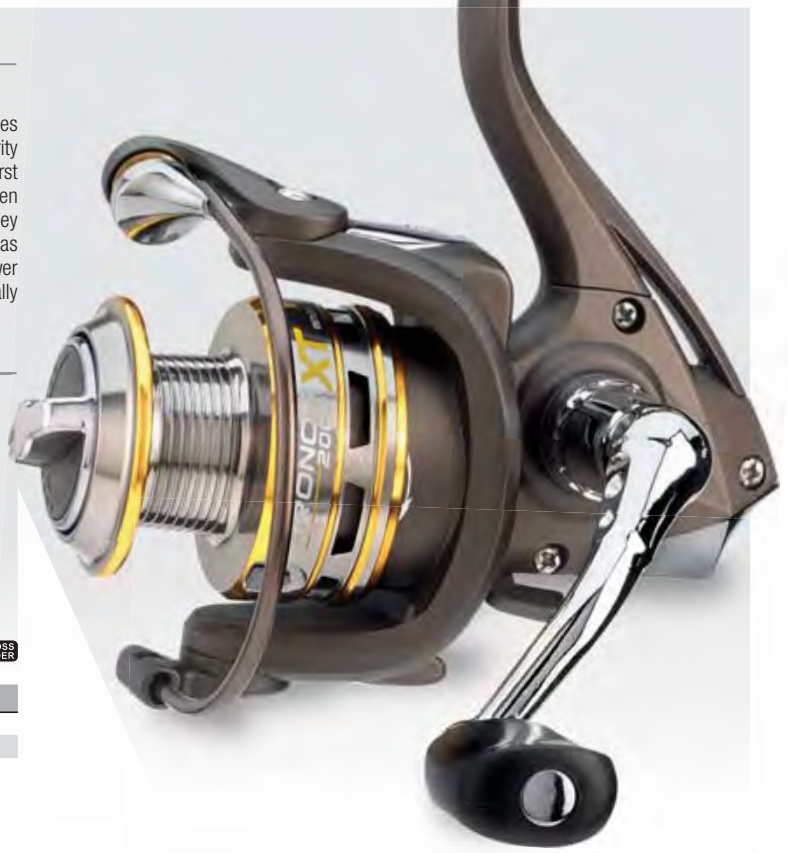
Code	Model	Wt	Gear Ratio	Spool Capacity	Extra Sp.	B.B.
033-80-200	2000	245	5.1:1 (68 cm)	Ø 0.20 mm - 300 m	1	5+1
033-80-300	3000	284	5.1:1 (71 cm)	Ø 0.25 mm - 265 m	1	5+1
033-80-400	4000	300	5.1:1 (77 cm)	Ø 0.30 mm - 250 m	1	5+1

QOSMIO cx

The Qosmio project is really interesting and it is made of two sizes, a 3000 and a 4000 graphite compact bodies equipped with a cold forged aluminium spool. The wide diameter



Code	Model	Wt	Gear Ratio	Spool Capacity	Extra Sp.	B.B.
033-96-300	3000	255	5.0:1 (71 cm)	Ø 0.25 mm - 200 m	1	3+1
033-96-400	4000	255	5.0:1 (71 cm)	Ø 0.30 mm - 160 m	1	3+1



of the spool will help to increase the casting distance. Qosmio are made in a very simple but functional way, exploiting powerful smooth gears supported by 3+1 Long Life stainless steel bearings. Despite the good price, the Qosmio is really smooth and offers even a second graphite spool and a cold forged aluminium handle. Not easy to find similar equipment at this price point!

FEATURES:



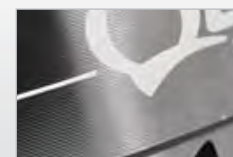
- Super stiff hi-tech graphite body
- Longcast CNC aluminium main spool
- Graphite spare spool
- Traditional bail with anti twist line roller
- Micro-adjustable drag with oversized washers
- Long Life stainless steel ball bearings
- Infinite anti-reverse
- Power Fight aluminium handle with rubber knob



The aluminium handle is swept to follow rotor shape. This detail positively affects rotation balance - specially at high speed - as the handle's weight is closer to reel's centre of gravity.



Great care has been put in every detail, with stylish holes in spool's skirt and nice windows which make the rotor lighter.



The micro grooves which are visible on the spool through a magnifier lens are the signs left by CNC machine. This proves that it has actually been carved from a solid piece of aluminium to obtain extreme strength.



TRONIK XTR5

This exclusive reel has been designed and engineered by the same team of technicians that created the Airblade and for some aspects it resumes certain concepts. If the first reel featured a completely new shape, the second one, the Tronik, seems to be a brilliant summary of old and new styles. The shape of the body and rotor is futuristic, rich in round bends and empty spaces. These shape is futuristic but it is remembering as well the reels with circular bodies of our grandfathers.

Technically, the body is a single graphite frame including the 5.1:1 gears where a unique aluminium handle is set. The handle is bent around its own axis, being this way more innovative but also stiffer. Like for Airblade, it's possible to fold it just pushing the red button, so reducing the volume of the reel to easily store the rod into the holdall. The spool is an hybrid aluminium and graphite, giving a strong visual impact and a very low weight. Inside the spool, the drag system features extra large washers, up to 30% wider than usual, and it is so really micro adjusting. Bail arms are always a critical point and they have been made in aircraft aluminium. 5 ball bearings support the inner gears. It is appropriate to underline here that cause of the very narrow body, only 16mm without the side covers, it was not possible to put a one way clutch inside. For that purpose, the team of engineers designed an innovative semi-infinite anti reverse system that can work without the one way clutch. This solution is on the other hand very good to increase the cranking power of the reel, because the normally used one way clutch are often responsible of cranking power decrease up to 30%. Once again Trabucco is in the forefront of innovations in fishing tackle!

FEATURES:

- Super Light Rotor. Using spacecraft materials the rotor is lighter and tougher.
- Innovative one touch handle, with EVA covered balanced handle knob made from ABS shock resistant material.
- No gap between side covers and no screws on exterior parts.



POWERBAIL



Code	Model	Wt	Gear Ratio	Spool Capacity	Extra Sp.	B.B.
033-90-400	XTR 5	273	5.1:1(83 cm)	Ø 0.250 mm - 210 m	1	5



LEGACY FD

Here is the Legacy second edition, a family of reels that confirmed to be able to amaze all the anglers cause of its performance. The amazing look of this reel is just enhancing the great technical value. The gears are super smooth due to the 2+1 stainless steel bearings positioned in the locations suffering the highest friction. Body and balanced rotor are made of light and stiff graphite, to contain the total weight. The stiffness of the graphite is a warranty of a long life of all inner gears. The bail arm is equipped with anti twist line roller, very important for long fishing sessions with no line problems. The main spool is really nice, made of anodized aluminium and corrosion free. The spare spool is super light graphite made. To increase cranking power the Legacy features a cold forged aluminium handle. The great range of models can really satisfy all the needs, from fresh to salt water. From 1000 size, specific for finesse fishing to 6000 for bottom fishing, passing through the 4000 that is a really allround size.

FEATURES:

- Graphite body
- Ultralight CNC aluminium spool
- Graphite spare spool
- Traditional bail with anti twist line roller
- Micro-adjustable drag with oversized washers
- Long Life stainless steel ball bearings
- Infinite anti-reverse
- Aluminium handle



Code	Model	Wt	Gear Ratio	Spool Capacity	Extra Sp.	B.B.
034-20-100	1000	240	5.5:1 (72 cm)	Ø 0.20 mm - 195 m	1	2+1
034-20-200	2000	260	5.5:1 (75 cm)	Ø 0.20 mm - 230 m	1	2+1
034-20-300	3000	290	5.2:1 (78 cm)	Ø 0.25 mm - 215 m	1	2+1
034-20-400	4000	310	5.2:1 (84 cm)	Ø 0.30 mm - 175 m	1	2+1
034-20-500	5000	330	5.2:1 (88 cm)	Ø 0.35 mm - 195 m	1	2+1
034-20-600	6000	350	5.2:1 (92 cm)	Ø 0.45 mm - 140 m	1	2+1

REGENT FA



Wide new family of reels that are good to be used in a variety of techniques, both in fresh and salt water. Despite their gear is supported by a single bearing, the movement is really smooth. We achieved this result using self-lubricating Teflon bushes and a Multistop antireverse. The smallest sizes, like the 1000 and 2000, are very good for light and ultra light spinning, while the 3000 and 4000 sizes are widely used with Bolognese and Bombarda rods. The bigger sizes like 5000 and 6000, thanks to the high capacity of their spools, are perfect for live bait and bottom fishing and for many salt water uses. The reels are pre spooled and they are ready to go as soon as they come out of their box.

FEATURES:



Code	Model	Wt	Gear Ratio	Spool Capacity	Extra Sp.	B.B.
033-48-100	1000	240	5.5:1 (72 cm)	Ø 0.18 mm - 215 m	-	1
033-48-200	2000	260	5.5:1 (75 cm)	Ø 0.20 mm - 195 m	-	1
033-48-300	3000	290	5.2:1 (78 cm)	Ø 0.25 mm - 245 m	-	1
033-48-400	4000	310	5.2:1 (84 cm)	Ø 0.30 mm - 195 m	-	1
033-48-500	5000	330	5.2:1 (88 cm)	Ø 0.35 mm - 275 m	-	1
033-48-600	6000	350	5.2:1 (92 cm)	Ø 0.45 mm - 195 m	-	1



SPOOLED WITH **XP-Line**



SPOOLED WITH **XP-Line**

AURIS EVO FA



New wide series of reels offering a good solution for style of fishing at a very competitive price. Retrieve is very smooth even if only one ball bearing has been used. This is due to the top quality bushes used instead. Gear ratio has been differentiated, 5.5:1 for smaller sizes, 5.2:1 for bigger, to match the different techniques needs. We improved the handle introducing a new 4 pegs locking system, obtaining a smooth retrieve and preserving gears from use. This series can count on some pre-spooled models as well, available in sizes 3000 and 6000. In this was the anglers has the comfort to buy a ready to go reel and the possibility to see hoe hood these reels spool the line. Not

to mention the possibility to buy at a competitive price both a good reel and a good Trabucco quality line.

FEATURES:



Code	Model	Wt	Gear Ratio	Spool Capacity	Extra Sp.	B.B.
033-46-100	1000	240	5.5:1 (72 cm)	Ø 0.18 mm - 215 m	-	1
033-46-200	2000	260	5.5:1 (75 cm)	Ø 0.20 mm - 195 m	-	1
033-46-300	3000	290	5.2:1 (78 cm)	Ø 0.25 mm - 245 m	-	1
033-46-400	4000	310	5.2:1 (84 cm)	Ø 0.30 mm - 195 m	-	1
033-46-500	5000	330	5.2:1 (88 cm)	Ø 0.35 mm - 275 m	-	1
033-46-600	6000	350	5.2:1 (92 cm)	Ø 0.45 mm - 195 m	-	1

Spooled with XP-Line Phantom

033-46-920	2000	260	5.5:1(75cm)	Spooled	-	1
033-46-930	3000	290	5.2:1(78cm)	Spooled	-	1
033-46-960	6000	350	5.2:1(92cm)	Spooled	-	1

MITO MICRO FD & RD

Ultra thin shape body, ultralight aluminium spool and strong main gear make this reel the first choice for all the angler who don't accept compromise on quality and reliability. Unrivalled smoothness, and micro-adjustable front drag. Perfect for ultra-light spinning and bolognese. Anti twist line roller will help to preserve the thin monofilament normally used for this discipline.



FEATURES:

Code	Model	Wt	Gear Ratio	Spool Capacity	Extra Sp.	B.B.
033-13-100	FD100	160	5.2:1 (60 cm)	Ø 0.18 mm - 165 m	-	4+1
033-13-200	RD100	160	5.2:1 (60 cm)	Ø 0.15 mm - 300 m	-	4+1

AURIS MICRO



Super light series sold with pre spooled line. The possibility to see this reel already spooled allow the anglers to appreciate the spooling system. Drag is very well calibrated and gear, despite dimensions, is powerful and reliable.

FEATURES:

Code	Model	Wt	Gear Ratio	Spool Capacity	Extra Sp.	B.B.
033-44-100	100	162	5.5:1 (69 cm)	Spooled	-	1



ZEON XT MICRO



This tiny model is designed for ultra-light spinning and is available in one size only. Featuring a stainless steel ball bearing, front micrometric drag, graphite spool, Multistop system and balanced handle with a soft knob. Is perfect for trout fishing, with a light spinning rod and ultra light lures.

FEATURES:

Code	Model	Wt	Gear Ratio	Spool Capacity	Extra Sp.	B.B.
031-18-100	100	150	5.5:1 (69 cm)	Ø 0.18 mm - 145 m	-	1



CASTFORCE FEEDER



NEW CASTFORCE XT FEEDER

Designed to belong to the Castforce Feeder family, thus in line with its general technical characteristics, it differs from the other members for the presence of two line clips on spool's skirt. In current feeder fishing, in fact, it is increasingly common to see the leading anglers to tackle two different lines, possibly with the introduction of different bait, to be able to count on alternatives when the performance begins to decline. But that's not all: the clips have round profile and are internally spring loaded, in order to avoid any injury to the line, be it nylon or braided, and to absorb the impact of the feeder. The spool's configuration, which is remarkably large, makes this reel ideal in combination with Long Distance rods.

FEATURES



- 5 Long Life Ball Bearing System
- 1 Roller Bearing
- One way clutch system
- Aluminium Powerball
- Micro-adjusting Front Drag With Oversized Washers
- Cold Forged Superlight Aluminium Spool
- Lightweight Graphite Spare Spool
- One Touch Handle With T-Rubber Knob
- Anti Twist Line Roller
- Line Guard Protector system to avoid line slipping down the spool's skirt



Two line clips - round and spring loaded - can actually boost feeder fishing efficacy, as they allow to feed two different lines, creating alternative spots.



Code	Model	Wt	Gear Ratio	Spool Capacity	Extra Sp.	B.B.
033-87-550	5500	380	4.9:1 (84 cm)	Ø 0.25 mm - 130 m	1	5+1

QOSMIO FEEDER

Feeder fishing is having more and more success all over Europe, both in fresh and salt water. To satisfy the market needs Trabucco is introducing a brand new reel, specifically designed for this high effective and funny technique. The high end quality of the materials used to build the new Qosmio Feeder allow a super smooth and effortless retrieve of the biggest fish. The ratio has been choose to have enough speed and still enough power. The conical spool allows longer and more accurate casts, preserving the spooled line from stress and granting a longer use and better performance.



FEATURES

- Graphite body
- Oversized aluminium main spool
- Hollow bail with Anti Twist line roller
- Micro-adjustable drag with oversized disks



- Infinite anti-reverse
- Aluminium handle



Code	Model	Wt	Gear Ratio	Spool Capacity	Extra Sp.	B.B.
033-81-400	4000	300	5.2:1 (85 cm)	Ø 0.25 mm – 250m	-	5+1
033-81-600	6000	420	5.2:1 (95 cm)	Ø 0.30 mm – 315m	-	5+1



QOSMIO CX FEEDER

The new Trabucco reel for feeder fishing won't certainly go unnoticed. The brand new Qosmio CX Feeder is a 5000 sized reel specifically designed for feeder fishing, considering all the specificities of this technique. The graphite body is compact and light weight, and is equipped with an aluminium spool and handle. We choose to go for an aluminium handle to increase the cranking power, while the spool must be aluminium to allow the use of fine braided lines, as, for instance, the new Trabucco Dyna-Tex Power Silk Feeder Braid. The 5,5:1 gear ratio is fast enough to reduce the retrieving time, very important during the competition, but not enough to go down in cranking power. For all the anglers who prefer to use monofilaments instead of braided, the graphite spare spool will be ok, and they will save some weight too. All the gears are supported by 3+1 Long Life stainless steel bearings.



The micro grooves on spool are the signs left by CNC machine. This proves that it has actually been carved from a solid piece of aluminium to obtain extreme resistance.

FEATURES



- Ultra stiff hi-tech graphite body
- CNC aluminium main spool (shallow)
- Graphite extra spool (deep)
- Traditional bail with Anti Twist line roller
- Micro adjustable drag with oversized washers
- Infinite anti-reverse
- Aluminium handle with rubber knob



Code	Model	Wt	Gear Ratio	Spool Capacity	Extra Sp.	B.B.
033-96-550	5500	415	5.5:1 (104 cm)	Ø 0.20 mm – 200 m	1	3+1





NEW KRONOS XTR

Series that incorporates the aesthetic and technical characteristics of the homonymous front drag variant, offering the convenience of the rear drag knob, a solution that more than forty years after its birth is still very popular all over Europe. With the three available sizes, characterized by the light graphite structure, the Kronos allows you to create perfect combinations with bolognese, match rods and trout rods. The special shape of the handle arm approaches its center of gravity to that of the reel, reducing the oscillations and making the rotation quite pleasant. The extra graphite spool, supplied with the reel, is valuable to always have a different or fresh line ready to use.



FEATURES



Code	Model	Wt	Gear Ratio	Spool Capacity	Extra Sp.	B.B.
033-79-200	2000	260	5.1:1 (68 cm)	Ø 0.20 - 300 m	1	5+1
033-79-300	3000	290	5.1:1 (71 cm)	Ø 0.25 - 265 m	1	5+1
033-79-400	4000	320	5.1:1 (77 cm)	Ø 0.30 - 250 m	1	5+1

NEW DYNAMIC XTC RD

It's the first rear drag reel to benefit from oversized spool design, a Trabucco project that enriches several front drag series, including the homonymous Dynamic XTC-FD, which is coordinated in features, components and cosmetics. The series consists of four sizes, able to meet all classic requirements: bolognese, match fishing, lake and river trout. Despite the price is really interesting, the spool is machined from a solid bar of aluminium to ensure high strength. Just look at the spool through a good magnifying glass to clearly see the micro-grooves left by the tool that removes metal from the original block to carve the spool. An element that has a significant impact on the value of the reel because the spool's resistance belongs to another world.

FEATURES



Code	Model	Wt	Gear Ratio	Spool Capacity	Extra Sp.	B.B.
034-23-100	1000	260	5.5:1 (78 cm)	Ø 0.20 mm - 195 m	1	2+1
034-23-200	2000	270	5.5:1 (81 cm)	Ø 0.20 mm - 230 m	1	2+1
034-23-300	3000	340	5.2:1 (83 cm)	Ø 0.25 mm - 215 m	1	2+1
034-23-400	4000	360	5.2:1 (91 cm)	Ø 0.30 mm - 175 m	1	2+1



OVERSIZED SPOOL PERFORMANCE

From quality and cosmetic points of view, the Dynamic XTC RD series is coordinated with the homonymous family of front drag reels. In common, they have the innovative Trabucco oversized spool, which offers three advantages:

- Longer casting distances, thanks to wider and smoother line coils;
- Upper spool's lip easier to reach by fingers of the hand which holds the rod;
- Faster and smoother drag start, due to longer lever exerted by the line to disk's centre.



OVERSIZED SPOOL DESIGN

LEGACY RD

Here is the Legacy second edition, a family of reels that confirmed to be able to amaze all the anglers cause of its performance. The amazing look of this reel is just enhancing the great technical value. The gears are super smooth due to the 2+1 stainless steel bearings positioned in the locations suffering the highest friction. Body and balanced rotor are made of light and stiff graphite, to contain the total weight. The stiffness of the graphite is a warranty of a long life of all inner gears. The bail arm is equipped with anti twist line roller, very important for long fishing sessions with no line problems. The main spool is really nice, made of anodized aluminium and corrosion free. The spare spool is super light graphite made. To increase cranking power the Legacy features a cold forged aluminium handle. The great range of models can really satisfy all the needs, from fresh to salt water.



Code	Model	Wt	Gear Ratio	Spool Capacity	Extra Sp.	B.B.
034-21-100	1000	240	5.5:1 (72 cm)	Ø 0.20 mm - 195 m	1	2+1
034-21-200	2000	260	5.5:1 (75 cm)	Ø 0.20 mm - 230 m	1	2+1
034-21-300	3000	290	5.2:1 (78 cm)	Ø 0.25 mm - 215 m	1	2+1
034-21-400	4000	310	5.2:1 (84 cm)	Ø 0.30 mm - 175 m	1	2+1

AURIS EVO RA

An extremely comprehensive series of reels, offering solutions to all anglers for all techniques. The mechanical, definitely very fluid for a reel in its class, has a single ball bearing but many precision bushes that support all the gears in their rotation. The gear ratio has been carefully differentiated between the smaller sizes and the bigger ones, ranging from 5.5:1 to 5.2:1 in order to meet the needs of cranking power related to the intended use of the individual models. The series is completed by two pre-spooled models, offering the proven quality of Trabucco XP monofilament line. Beyond the convenience of buying a ready to use reel at a competitive price, the perfection of line lay and the qualities of a good Trabucco line are easily appreciated.

Code	Model	Wt	Gear Ratio	Spool Capacity	Extra Sp.	B.B.
033-47-100	1000	240	5.5:1 (72 cm)	Ø 0.18 mm -215 m	-	1
033-47-200	2000	260	5.5:1 (75 cm)	Ø 0.20 mm -195 m	-	1
033-47-300	3000	290	5.2:1 (78 cm)	Ø 0.25 mm -245 m	-	1
033-47-400	4000	310	5.2:1 (84 cm)	Ø 0.30 mm -195 m	-	1

Spooled with XP-Line						
033-47-920	2000	260	5.5:1 (75 cm)	Spooled	-	1
033-47-930	3000	290	5.2:1 (75 cm)	Spooled	-	1



SPOOLED WITH XP-Line



REGENT RA

SPOOLED WITH XP-Line

Wide new family of reels that are good to be used in a variety of techniques, both in fresh and salt water. Despite their gear is supported by a single bearing, the movement is really smooth. We achieved this result using self-lubricating Teflon bushes and a Multistop anti-reverse. The Regent reels are really easy to use and are just perfect to counterbalance very long rods, such as Bolognese and telescopic Match and Bombarda rods as well. The reels are pre spooled and they are ready to go as soon as they come out of their box.

Code	Model	Wt	Gear Ratio	Spool Capacity	Extra Sp.	B.B.
033-49-100	1000	240	5.5:1 (72 cm)	Ø 0.18 mm - 215 m	-	1
033-49-200	2000	260	5.5:1 (75 cm)	Ø 0.20 mm - 195 m	-	1
033-49-300	3000	290	5.2:1 (78 cm)	Ø 0.25 mm - 245 m	-	1
033-49-400	4000	310	5.2:1 (84 cm)	Ø 0.30 mm - 195 m	-	1



MARVEL



Gianluigi Sorti

MARVEL CRX

Super smooth reel, whose gears are supported by 9 Long Life Ball Bearing and 1 One Way bearing, equipped with Free Spool System. The drag is the real strong point of Marvel, featuring wider discs and super fine adjusting options. Main spool is made of aluminium, while the second spool is made of graphite. The fighting handle is aluminium machine cut.

FEATURES



Code	Model	Wt	Gear Ratio	Spool Capacity	Extra Sp.	B.B.
033-83-400	4000	392	5.2:1 (82 cm)	Ø 0.30 mm - 200 m	1	9+1
033-83-600	6000	494	5.2:1 (90 cm)	Ø 0.40 mm - 195 m	1	9+1

MARVEL CRS

Super smooth reel, whose gears are supported by 2 Long Life Ball Bearing and 1 One Way bearing, equipped with Free Spool System. The drag is the real strong point of Marvel, featuring wider discs and super fine adjusting options. Main spool is made of aluminium. The fighting handle is aluminium machine cut.

FEATURES



Code	Model	Wt	Gear Ratio	Spool Capacity	Extra Sp.	B.B.
033-82-400	4000	385	5.2:1 (82 cm)	Ø 0.30 mm - 200 m	1	2+1
033-82-600	6000	489	5.2:1 (90 cm)	Ø 0.40 mm - 195 m	1	2+1



Goran Radovic



AURIS BR

SPOOLED WITH **XP-Line**

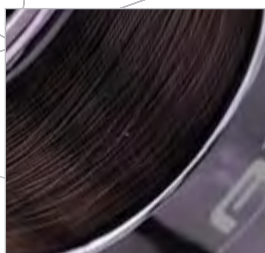
High quality components encased in a graphite body. Thanks to this features it is extremely lightweight and durable. The Free Runner Trabucco entry level is perfect for those who want to start ledgering or boat fishing session. Quality and warranty for this product are unbeatable in this price range, especially considering a very wide spools that helps keep the line in perfect condition at all times without forming loops. Auris BR is just sold spooled with XP line to allow his spooling features.

FEATURES



Code	Model	Wt	Gear Ratio	Spool Capacity	Extra Sp.	B.B.
033-28-400	4000	320	5.2:1 (82 cm)	Ø 0.30 mm - 180 m	-	1
033-28-500	5000	402	5.2:1 (86 cm)	Ø 0.30 mm - 300 m	-	1
033-28-600	6000	425	5.2:1 (90 cm)	Ø 0.30 mm - 340 m	-	1

AXIS BR



You don't need to pay a fortune for good light weight free runner reel, if it comes from Trabucco, of course. Even if this reel is so light weight, it does not mean it is not strong or reliable enough. On the contrary, this reel is the proof that a good project can exceed market requests. Smooth and well balanced, this reel is good for every fishing style requiring a reliable drag.

Axis Br comes already spooled with genuine Trabucco XP-Line Carp 0.35.

FEATURES



Code	Model	Wt	Gear Ratio	Spool Capacity	Extra Sp.	B.B.
033-29-600	6000	350	5.6:1(87cm)	Ø 0.40 mm - 160 m	-	1



SPOOLED WITH **XP-Line**

XRIDE



NEW X-RIDE SURF

Not only Trabucco top of the range, but world class reels! X-Ride is a series specially developed for surf casting around a large long cast spool and limited weight to perfectly match nowadays lighter surf rods. The graphite body is particularly thin and elegant, while the spool, made from anodized aluminium, is fitted on to a polymer frame which avoids line slipping down, thus eliminating tangle risks, specially when using fine lines. The aluminium handle is long and swept; gears rotation is assisted by 13 ball bearings, including the large one which drives the infinite anti-reverse. Drag is sealed to avoid salt and sand getting in. Thanks to worm shaft, the line lay is absolutely perfect. The tubular bail is made from aluminium, and is quite strong and light at the same time. The whole reel is protected against corrosion, and ball bearings are double shielded to prevent salt and sand damaging their function. The new size 6500 is openly dedicated to beach legering, eventually with fine mono or braided lines, a fishing style developed by pleasure anglers which today is adopted by the best surf match anglers in the whole Mediterranean. Size 8000 is oriented to light surf, with light weight and a wide, tapered spool (7 cm diameter and 4 cm height), which enables impressive casts even with light leads such as 50 or 75 grams. The size 10000 is destined to proper surf casting, with a 25% higher spool to obtain a wider angle in lines distribution, which means that friction between line coils is reduced during the cast. All reels are equipped with cast lock system to avoid incidental closure, so that the bail arm can be closed manually only.

Code	Model	Wt	Gear Ratio	Spool Capacity	Extra Sp.	B.B.
035-06-060	6500	560	4.6:1 (92 cm)	Ø 0.30 mm - 270 m	-	12+1
035-06-080	8000	625	4.6:1 (94 cm)	Ø 0.32 mm - 320 m	-	12+1
035-06-100	10000	750	4.5:1 (97 cm)	Ø 0.35 mm - 270 m	-	12+1
035-06-061				Long Cast Spare Spool 6500		
035-06-081				Long Cast Spare Spool 8000		
035-06-101				Long Cast Spare Spool 10000		



The 8000 and 10000 spools differ in length. The 10000 is recommended in case thick lines are spooled, because the coils form a wider angle.



On left, the standard ball bearings are open to get salt within balls. On right, the shielded version from X-Ride series is safe from aggressive agents.



Thanks to its special design, the worm shaft is responsible of perfect line lay on reel's spool. As a consequence, the casting distance is improved, due to easier line flow.

FEATURES

Hi-Tech graphite body and rotor
Ultraflight aluminium long cast spool
Hollow bail with titanium Anti Twist line roller
Double Shielded SS Long Life Ball Bearings
Saltwater & Dust Proof Drag
Infinite Antireverse

Stainless Steel main shaft
Worm Shaft for a perfect line lay
Bail arm lock system (manual closure only)
Machined aluminium handle with rubber knob





NEW X-RIDE BEACH

SPECIAL BEACH



A super concentrate of technologies, filtered by direct experience and highlighted by a brilliant design, because fishing with an X-Ride Beach must be pleasant beyond the pure technical functions. Configured and super tuned for beach legering, this reel has a calibrated capacity tapered spool, with the upper lip profiled to offer minimal friction to the flowing line. Fully treated against corrosion, it has the drag box sealed to keep out dust and

water, fits stainless steel ball bearings and main shaft, while the Worm Shaft deals with crossed line lay. To avoid accidental overturn during the more energetic casts, the bail arm can only be closed manually.



The drag box of X-Ride Beach is safely sealed by a soft rubber gasket, a solution which prevents salt water intrusion as well as keeping dust and sand far from disks.

The shallow spool is absolutely perfect in a technique, like beach legering, where more and more thin lines are now used. Its upper lip has been designed to reduce friction to the bare minimum.

Code	Model	Wt	Gear Ratio	Spool Capacity	Extra Sp.	B.B.
035-07-550	5500	540	4.6:1 (91.5 cm)	Ø 0.25mm - 300m	-	10+1
035-07-551	Long Cast Spare Spool 5500					

FEATURES

High strength engineered Xtra Tough body
Cold forged long cast superlight aluminium spool
Large diameter aluminium bail wire, with titanium coated anti-twist line roller
Sensitive and sealed drag system

Stainless steel ball bearings
Double strength stainless steel main shaft
Infinite anti-reverse bearing
Worm shaft system provides perfect line lay



Bail arm lock system (manual closure only)
Machined aluminium handle with light rubber grip



LANCER SURF

LANCER SURF

The Lancer Surf is a great surf casting reel made of super stiff, light weight graphite, whose overall weight is only 700 g. The oscillation system spools the line perfectly and it is super slow, lowering the stress to the line. The super slow oscillation system together with the worm shaft gear are the perfect solution for a perfect line lay that is key for long casts. The super tapered spool is designed for long casting as well. The Lancer Surf is not only a reel casting like a cannon, it is a powerful reel too, due to the low 4.3:1 ratio gears and the aluminium fighting handle. The crushproof tubular aluminium bail arm is equipped with a blocking system that prevents casual closing. The closing is just by hand. The new drag is the special Fast Play Drag, so with only one drag turn, the spool goes from totally blocked to totally free. This solution is useful when you need to give line rapidly or when you need to hang on the line the bite detectors. The 6+1 Long Life bearings are stainless steel and salt water proof. A second aluminium spool can be purchased separately at a really affordable price.



Code	Model	Wt	Gear Ratio	Spool Capacity	Extra Sp.	B.B.
035-14-800	8000	700	4.3:1 (92 cm)	Ø 0.30 mm - 260 m	-	6+1
035-14-801				Aluminium Spare Spool		



By just half a turn of drag knob, the drag is completely loose or totally fastened.



Light and strong aluminium tubular bail, with anti-twist line roller.



Thanks to its special design, the worm shaft is responsible of perfect line lay.



Power and smoothness thanks to the multi-disk drag (steel and PTFE coated disks).

FEATURES

- Hi-Tech graphite body and rotor
- Ultralight aluminium Longcast spool
- Hollow bail with titanium Anti Twist line roller
- Stainless steel Long Life Ball Bearings
- Sealed drag, with PTFE coated disks

- Infinite Antireverse
- Worm Shaft for a perfect line lay
- Bail arm lock system (manual closure only)
- Stainless Steel main shaft



MAXXIS



MAXXIS HYPER SURF

With a complete saltwater protection and sealed ball bearings, it's well prepared to face the tough life at sea side, its true vocation. But it's not just that: the new series Maxxis Hyper Surf offers a lot more, starting from a perfect volume's ratio which is based on a compact body and large spool, destined to smoothly handle the line with its wide diameter, tapered profile and slim lip. The worm shaft is behind a clean line lay, and the job is done with slower than standard oscillation; the best way to provide a quick, neat and trouble free cast is to regularly wind the line onto the spool, and in this sense Maxxis doesn't fear the comparison to the rest of surf casting reels. The aluminium handle is nicely swept to keep its barycentre as close as possible to body's axis, thus limiting the oscillations during the retrieve. With such list of technical specifications, everybody would expect an high price, but this is surely going to shock the whole beach community.



Code	Model	Wt	Gear Ratio	Spool Capacity	Extra Sp.	B.B.
035-15-080	8000	610	4.5:1 (98 cm)	Ø 0.35 mm - 220 m	1	3+1
035-15-100	10000	735	4.5:1 (98 cm)	Ø 0.40 mm - 220 m	1	3+1

FEATURES

- X-Tra Tough graphite body
- Longcast aluminium spool
- Longcast aluminium spare spool
- Traditional bail with Anti-Twist line roller
- Sealed stainless steel ball bearings

- Infinite antireverse
- Worm Shaft for a perfect line lay
- Aluminium handle with ergonomic rubber knob



XENOS



Emiliano Tenerelli

XENOS LDX

Japanese designed high performance reel, made precious by several technical solutions that increase the fishing experience with it. Graphite body is light weight but robust, while the aluminium fighting handle features a large knob that is very comfortable. Long cast cold forged aluminium spool is conical shaped and together with the perfect worm shaft

line lay, grants the longer casts possible. Drag system is sealed to preserve its integrity from salt water and sand, so it can be always ready when needed. Graphite spare spool. Additional aluminium spare spool can be purchased separately at a very competitive price.

FEATURES



- Hi-Tech graphite body and rotor
- Ultralight aluminium easy cast spool
- Graphite extra spool
- Hollow bail with titanium Anti Twist line roller
- Rotary Flat Oscillation System
- Double Shielded SS Long Life Ball Bearings
- Saltwater & Dust Proof Drag
- Infinite Antireverse
- Worm Shaft for a perfect line lay
- Stainless Steel main shaft
- Bail arm lock system (manual closure only)



Hidden in the body's hearth, there is an important part of Xenos LDX. Thanks to its special design, the worm shaft is responsible of perfect line lay on reel's spool. As a consequence, the casting distance is improved, due to easier line flow.



The titanium line roller is linked to bail arm with a tapered sleeve which drives the line to roller, even when tension is very low.



Code	Model	Wt	Gear Ratio	Spool Capacity	Extra Sp.	B.B.
035-10-100	10000	700	3.9:1 (90cm)	Ø 0.30 mm - 385 m	1	5+1
035-10-101	Easy Cast Spare Spool					



On left, the standard ball bearings are open to get salt within balls. On right, the shielded version fitted on Xenos LDX series is safe from aggressive agents.

XENOS SURF POWER

Japanese project, Italian Design. Carefully finished in every detail, the Xenos family is synonymous of reliability and long lasting quality. The proof is the Xenos family producing new models year after year. The new Power Surf it is actually a powerful reel with all a rugged reel should have and nothing more. The graphite body is very stiff, to preserve gears, and the aluminium handle is one touch for best storing.

The graphite spool is conical to help line to exit during casting and to get longer distances. 5 stainless steel saltwater proof ball bearings and a one way clutch support the gears. The bail arm is hollow, lighter but way more resistant. Additional spare spools can be eventually purchased at a very competitive price.



One touch is enough to fold the handle arm, thus reducing the reel's volume to easily store the rod into the holdall.

FEATURES



- Graphite body and rotor
- Graphite Longcast spool
- Traditional bail with Anti Twist line roller
- Double Shielded SS Long Life Ball Bearings
- Saltwater & Dust Proof Drag
- Infinite Antireverse
- Rotary Flat Oscillation System
- Stainless Steel main shaft
- Aluminium one touch folding handle



Code	Model	Wt	Gear Ratio	Spool Capacity	Extra Sp.	B.B.
035-12-100	10000	630	3.9:1 (90cm)	Ø 0.30 mm - 385 m	-	5+1
035-12-101	Lightweight Graphite Spare Spool					



CASTFORCE PRO SURF

The Castforce Pro Surf is a long casting reel offered at a very nice price but designed and equipped as more expensive models. The cold forged aluminium Long Cast spool features a smart system preventing the line to go under the skirt. Body and rotor are graphite made, the aluminium is machined cut aluminium and finished with a fighting knob. The tubular aluminium bail arm is crushproof. Since many anglers are into competitions, we decided to add a spare graphite spool that can be spooled with a different diameter line, to be used in different weather conditions. The 6+1 Long Life stainless steel bearings are salt water treated.



The special frame which follows the spool during its vertical oscillation features two short arms destined to prevent line from slipping down the spool's skirt, thus avoiding any line tangle around the rotor

FEATURES



POWERBAIL



Code	Model	Wt	Gear Ratio	Spool Capacity	Extra Sp.	B.B.
035-09-080	8000	660	4.1:1 (82 cm)	Ø 0.40 mm - 220 m	-	6+1

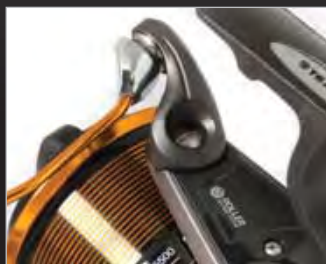


HyronCast



HYRONCAST

Compact and powerful, the Hyroncast is for sure one of the most powerful reels you can use from the beach and the boat. The graphite body holds a powerful gear with a quite fast ratio gear of 4.9:1 and a number of features that many beach casters will appreciate, as the worm shaft gear for a perfect line lay and a tapered aluminium spool. A perfect line lay is the best start to get a long cast. A second graphite spool comes into the box. A so powerful gear is supported by a fighting handle, made of machine cut aluminium. All the 6+1 Long Life bearings are stainless steel and salt water protected.



Aluminium Power Bail with specially shaped Anti Twist line roller.



Thanks to its special design, the worm shaft is responsible of perfect line lay on reel's spool, with neat angles between each coils. As a consequence, the casting distance is dramatically improved, due to easier line flow.

FEATURES



Code	Model	Wt	Gear Ratio	Spool Capacity	Extra Sp.	B.B.
035-05-550	5500	570	4.9:1 (97 cm)	Ø 0.25 mm - 310 m	1	6+1
035-05-650	6500	550	4.9:1 (97 cm)	Ø 0.30 mm - 390 m	1	6+1
035-05-800	8000	770	4.7:1 (103 cm)	Ø 0.35 mm - 330 m	1	6+1



Giuseppe Alesi

HORNET xTC

High capacity and super reliable surf casting reel featuring first quality equipment. The wide conical aluminium spool has a capacity of 450 meters of 0.30 and its profile helps to increase the casting distance. The reel has a second graphite spool as well. The spooling is perfect thanks to the Worm Shaft gear and the slow oscillation system SOS. Gears are really smooth thanks to 6 stainless steel salt water resistant ball bearing and the one way bearing.



The line clip is round and is assisted by a spring in order to avoid any line damage.

FEATURES



Code	Model	Wt	Gear Ratio	Spool Capacity	Extra Sp.	B.B.
033-84-990	10000	755	4.7:1 (105 cm)	Ø 0.30 mm - 480 m	1	6+1



I Cavalieri del Mare



ALIOTH SURF

Series of surf casting reels featuring very good performance for a very interesting price point. The body is graphite made, to stay light weight, while the spool and the handle are made of cold forged aluminium to give power. The wide diameter spool is perfect for long casting, together with the perfect line lay given by the worm shaft system. The line is always safe cause it will pass through an anti twist roller guide line. Gears are supported by 4 ball bearing and one way clutch. The drag has oversized discs and it is sealed to protect it against salt water and sand. Two sizes available, 8000 and 10000, to meet different needs throughout Europe.

Code	Model	Wt	Gear Ratio	Spool Capacity	Extra Sp.	B.B.
035-02-080	8000	582	4.8:1 (98 cm)	Ø 0.25 mm - 260 m	-	4+1
035-02-100	10000	693	4.3:1 (104 cm)	Ø 0.35 mm - 240 m	-	4+1

FEATURES



POWERBALL



KRONOS

KRONOS PRO SURF



When you need a powerful retrieve and reliability without frills, the nit is the time for rugged, plain and efficacious reels, such as the new Kronos Pro Surf. An extra strong graphite body combined with an aluminium forged long cast spool and a powerful drag, featuring oversized discs, able to face whatever difficult situation on the shore. The weight is light, so you can couple this reel even with light surf rods, but still a very good choice cause of the casting skills. Gears are smooth thanks to 6 Long Life ball bearings and one way clutch. The aluminium handle is long and making a good lever when retrieving heavy preys. This reel comes with spare graphite spool.



FEATURES



Code	Model	Wt	Gear Ratio	Spool Capacity	Extra Sp.	B.B.
033-38-100	8000	755	4.7:1 (100cm)	Ø 0,30mm - 450m	1	6+1



KRONOS SW



The Kronos Surf Casting reels family is now bigger as we introduced two new reels, the SW models, designed for Beach Casting with medium weight leads, around 75-125 g. These two models, 6000 and 8000 size, have a compact body and are light weight, being entirely made of corrosion resistant graphite. Main spool is aluminium, the spare one in polymer. The aluminium handle is very nice and features an high density ergonomic EVA fighting knob. The ratio of 4.9:1 for both models grants a lot of cranking power. Despite the small body the Kronos Surf SW spools are really wide, being able to be filled with close

to 500m of 0.20 (SW 6000) or close to 400m of 0.30 (SW 8000).



FEATURES



Code	Model	Wt	Gear Ratio	Spool Capacity	Extra Sp.	B.B.
033-39-600	6000	551	4.9:1 (92 cm)	Ø 0.20 mm - 490 m	1	6+1
033-39-800	8000	536	4.9:1 (98 cm)	Ø 0.30 mm - 390 m	1	6+1

DEYLAN



DEYLAN SURF

A particularly attractive model for the compactness of its body, in contrast to the amplitude of the tapered Long Cast graphite spool: typical characteristics of the high range reels designed for surf casting. The Worm Shaft makes the line coils lay neatly on the spool, while they get off quickly and smoothly during the cast. The complete saltwater proof treatment, the CNC aluminium handle and Long Life ball bearings put it well above the average, bringing it to a very interesting level. The reel is provided with excellent fluorescent orange Trabucco monofilament, already spooled at factory side.



Thanks to its special design, the worm shaft is responsible of perfect line lay on reel's spool, with neat angles between each coils. As a consequence, the casting distance is dramatically improved, due to easier line flow.



On left, the standard ball bearings are open to get salt within balls. On right, the shielded version fitted on Xenos LDX series is safe from aggressive agents.

Roberto Accardi



Code	Model	Wt	Gear Ratio	Spool Capacity	Extra Sp.	B.B.
033-35-080	8000	520	4.9:1 (105 cm)	Ø 0,35mm - 370m	-	4+1

FEATURES

- 4 Long Life Ball Bearing
- 1 Roller Bearing
- Graphite composite body
- Long Cast Superlight Graphite Spool
- Anti Twist Line Roller
- Micro-adjusting Front Drag with Oversized Drag Washers

- Infinite Anti Reverse «One Way» System
- Worm Shaft + S.O.S. Slow Oscillation System
- CNC Fighting Handle With Ergonomic Soft Knob

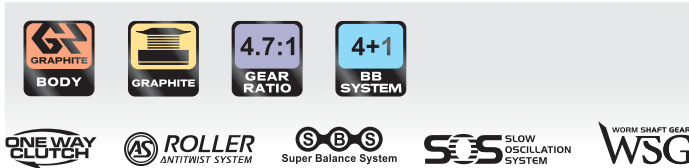


ANDROMEDA LONG CAST

Medium priced Surf Casting reel that despite the price offers a wide choice of specs that normally you can find only in more expensive models. We have here a wide ultra light graphite conical spool, absolutely necessary for long casting, and a perfect cross line spooling thanks to the Worm Shaft System. Both these solutions grant you long distance and no problems with your line. The slow oscillation gears help to keep the line healthy for a long long time, so you will not need to change it that often. One Touch foldable handle and 4+1 salt water protected bearing will make all your retrieves really smooth.



FEATURES



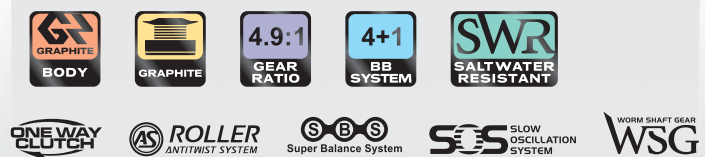
Code	Model	Wt	Gear Ratio	Spool Capacity	Extra Sp.	B.B.
033-37-990	10000	720	4.7:1 (100 cm)	Ø 0.45 mm - 300 m	-	4+1



SEARIDER NRG SURF

New series of reels designed for bottom salt water fishing, from the shores, the rocks or piers. The Searider NRG Surf has been initially conceived for surf casting from sandy beaches, but thanks to its versatility and the possibility to choose between 2 sizes, it can be used in more situations. The 8000 is perfect for surf casting and live bait fishing from the rocks, searching for the big bluefish. The 6500 is a very good compromise between light weight and power for Beach Ledgering technique.

FEATURES



Code	Model	Wt	Gear Ratio	Spool Capacity	Extra Sp.	B.B.
033-34-650	6500	510	4.9:1 (92 cm)	Ø 0.25 mm - 300 m	-	4+1
033-34-800	8000	515	4.9:1 (98 cm)	Ø 0.35 mm - 370 m	-	4+1

NEW OCEANIC PRO SURF

This reel is openly dedicated to those who approach the world of Surf Casting and bottom fishing in the sea. The low price must not be misleading, because the Oceanic Pro Surf has a great cross winder spooling system for a perfect line lay. We decided to market this product already loaded with Trabucco Max Plus line, in fluorescent orange colour, to make you even aware of this great line, very suitable for surf casting for its excellent visibility at night. The Long Cast graphite spool is lightweight and is surely destined to help achieving long casting distances.

FEATURES



Code	Model	Wt	Gear Ratio	Spool Capacity	Extra Sp.	B.B.
033-43-200	8000	613	4.1:1 (91cm)	Ø 0.40 mm - 250 m	-	1



NEW AVALON SURFCAST



Offered at budget price, this series has been developed for those who want to take their first steps in the Surfcasting world. The size 6500 covers the vast majority of requirements and allows the angler to quickly assimilate the key concepts of casting and retrieve. The alloy gears develop a recovery ratio of 4,1:1 (a good compromise of reliability and smoothness), and turns on one ball bearing and one roller bearing. The crossed winder spooling system cancels the risk that the line coils get accidentally loose, also because the AS Line Roller system deletes all the twist. The body is made from graphite and the spool is really super light, thus the weight is really low. A good drag system, definitely better than what the reel's price range could make you expect. Available in two colours (red and blue) for a stylish combination with the homonymous Avalon rods.

FEATURES



Code	Model	Wt	Gear Ratio	Spool Capacity	Extra Sp.	B.B.
033-42-300	6500 Red	620	4.1:1 (82 cm)	Ø 0.40 mm - 200 m	-	1
033-42-400	6500 Blue	620	4.1:1 (82 cm)	Ø 0.40 mm - 200 m	-	1



EXCEED

Top saltwater game spinning reel. Exceed series is designed for extreme fishing, as tropical popping, deep speed jigging and heavy spinning, from the boat and from the shore as well.

Reels born not to accept any compromise, a perfect combination of cutting edge technology and performance.



EXCEEDING YOUR EXPECTATIONS!

EMOTION

Salt water spinning, from the boat targeting blue tuna hunting in schools, or other noble and pugnacious species is absolutely a serious affair, not leaving any chance to improvisation or last minute equipment. It is key to use reels casting at greater distance, able to face longer than 1 meter fishes, made of powerful muscles, light enough not tire the casting anglers even after several hours of fishing. And it is key as well to know you can count on them in very instant of the fight, you can count on every single screw! And it is essential the drag can stand such a fight, being able to turn the head of the prey in the right direction when the moment is come, even if the line is whizzing through the guides and the rod blank is creaking. Who tried this perfectly knows what we mean. And knows this strong emotion can become obsession and reason of life. And finally knows he needs an Exceed reel!

POWERBAIL **STAINLESS STEEL COMPONENTS**

**Ai-Si
Cu-Mg**
ALUMINIUM
BODY

SWR
SALT WATER
RESISTANT

10+1 SS
SHIELDED
BEARINGS

30Kg
MAX
DRAG

FULL METAL BODY



The whole body of an Extreme reel is made of metallic alloy and aluminium, extremely resistant but lightweight materials, only 855 gr for the big 10000, a real winch for legendary trophy fishes. The whole oversized precision gears are made of rugged premium quality materials as well and are absolutely reliable: stainless steel drive gear, manganese/bronze alloy oscillation gear, stainless steel pinion and main axis. Positive Screw Lock handle, directly self locking into main gear. 4 mm solid aluminium bail arm. Bronze alloy drag knob and clicker. Nothing is left to chance.

HYBRID SPOOL & MAX DRAG

Exceed spool is a masterpiece of engineering: made of combination of aluminium and carbon to reduce total weight without compromising the overall strength. It is supported by two big stainless steel shielded bearings positioned on the main axis. The powerful drag is made of alternate carbon and stainless steel discs insuring a Max Drag of 30 Kg for all sizes (20 Kg on Salt Water Spin series), strong enough to stop, if you can!, the violent escape of big predators, such as a big GT or a Dogtooth Tuna, searching for shelter between some submerged sharp reef to cut the leader. Despite such a power it is possible to set it with great accuracy, throughout the whole scale. Capacity of the spool of each model has been designed carefully for that model only.



DESTINATION SALT WATER

Evidently designed for salt water use, Exceed reels feature sealed body and drag, 10 shielded stainless steel bearings, one of them made of metaformaldehyde supporting the titanium line roller. It is for sure the bearing the more exposed to water and to heat generated by friction and so needed an extraordinary care to choose the right material. Body features a special lubrication port designed to lubricate gears. All metal parts have been treated against salt water and all aluminium parts have been anodized to prevent corrosion. The anti reverse is permanent for safety reasons and it is supported by a one way stainless steel roller and a recovery stainless steel anti reverse pawl. 4.1:1 gear ratio gives the correct fighting power to fight against the strongest salt water predators, such as bluefin tuna and big GT. Exceed is the perfect reel for the heaviest spinning in Mediterranean Sea, deep vertical jigging and popping into tropical oceans. Dedicated to fanatics searching for strong excitement!

EXCEED SW

Since years the Exceed SW has been taken as example of the best reel in its category for heavy fishing from the boat. It has become so popular you can even find some models that tries to imitate it! All these imitations usually fail their attempt because always lacking of something, that is essentially the quality. And despite a lower quality they are even more expensive, without any technical motivation. All this could be enough to feel proud of ourselves, to have believed since the beginning to the possibility to build a superior quality reel at a price that can be defined reasonable and that everybody can buy. After a so long time from his first launch on the market, the Exceed SW continues to find the favour of anglers and the glory of numerous fishing reports thanks to its great strength, reliability and endurance. It has been used fishing with heavy metal jigs, and so it went under strong and continuous stress; it has been used for Bluefin tuna spinning, and it never gave any signal of failure; finally it has been taken to vacation in the tropical seas, where suffered the worst treatment you can imagine, for days and days. Not a single one of these experiences ever harmed it, or just dip into its "skin" (by the way it's "skin", or to better say its body, is made of a noble alloy made of Aluminum, Silica, Copper and Magnesium). If you don't like compromises forget the rest and just fish with an Exceed SW!

FEATURES

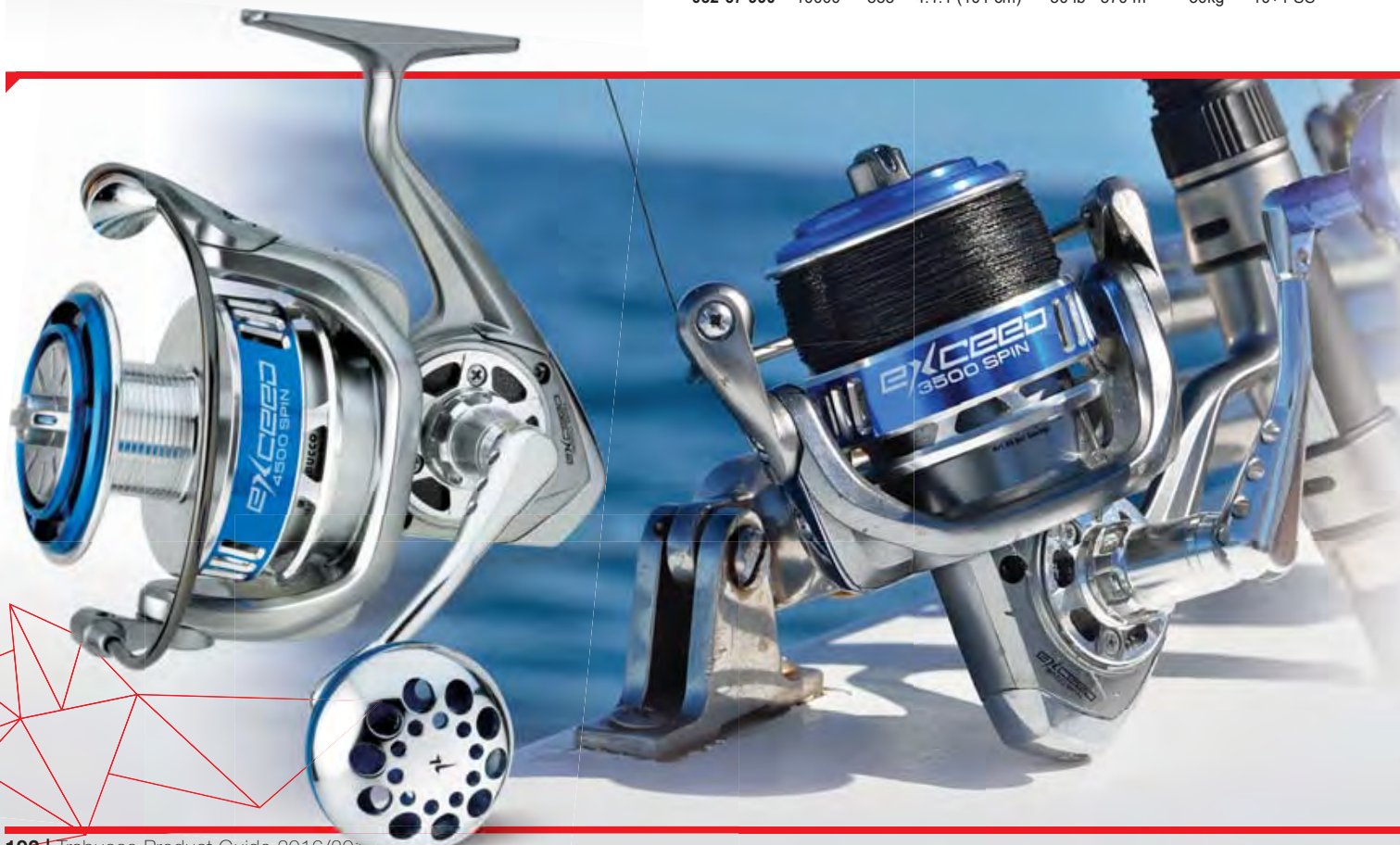


- Stainless Steel Drive gears, Pinion gear & Oscillation-Pinion gear
- Max drag 30 Kg (66lb)
- Gear box lubrication port / hole
- Al-Si-Cu-Mg Aluminium alloy body / rotor / bail arm assembly
- Manganese bronze alloy oscillation gear
- Non reversible LARGE one-way bearing (permanent one-way)
- Stainless steel backup anti reverse pawl
- Positive-Screw-lock CNC handle & knob
- Twin Ball bearing spool (for high speed drag runs)
- Stainless steel and carbon textile drag washers, fine adjustment from full release to full lock with super smooth all the way
- Fully sealed Body & Drag (100% water proof reel)
- No rust Polyester (Metaformaldehyde) Bearing line level pulley
- Titanium Line roller
- Solid 4mm bail wire
- All Stainless steel alloy for all other metal components
- 10+1 S. S. shielded bearings
- Gear ratio 4.1:1



STAINLESS STEEL COMPONENTS **POWERBAIL**

Code	Model	Wt	Gear Ratio	Spool Capacity	Max Drag	B.B.
032-67-700	7000	763	4.1:1 (88 cm)	40 lb - 300 m	30kg	10+1 SS
032-67-800	8000	845	4.1:1 (95 cm)	50 lb - 490 m	30kg	10+1 SS
032-67-990	10000	855	4.1:1 (101 cm)	50 lb - 570 m	30kg	10+1 SS



EXCEED SW-H

Three years already passed since the launch of the very first Exceed reel, and still it is one of the most requested. And it could not be otherwise since this reel is offering incredible performance and at an incredible price. In this 3 years some thing changed and also the fishing tackle world have seen major changes. Actually, more and more, people are fishing the bluefin tuna casting medium sized metal jigs. And people started to ask for specific reels for this sporting technique. The new Exceed SW 5000ZH has been designed to satisfy the needs of this people, featuring a 4.9:1 high speed ratio to allow a perfect retrieve of the metal jigs and a smaller, but not weaker body. Body and rotor are made of the same alloy (Al-Si-Cu-Mg) and sealed with a rubber o-ring. The 10+1 bearings are reinforced, double shielded and stainless steel. The Max Drag is 20 Kg. The new designed handle is a great addition: it is made of stainless steel and designed to be absolutely strong and reliable. The Exceed SW 5000H is also a light weight reel, only 520g, cause it must be used for long times, but also as powerful as a tuna reel must be.

FEATURES



- Stainless Steel Drive gears, Pinion gear & Oscillation-Pinion gear
- Max drag 20 Kg (44lb)
- Gear box lubrication port / hole
- Al-Si-Cu-Mg Aluminium alloy body / rotor / bail arm assembly
- Manganese bronze alloy oscillation gear
- Non reversible large one-way bearing (permanent one-way)
- Stainless steel backup anti reverse pawl
- Positive-Screw-lock CNC handle & knob
- Twin Ball bearing spool (for high speed drag runs)
- Titanium Line roller
- Solid 4mm bail wire
- Stainless steel and carbon textile drag washers, fine adjustment from full release to full lock with super smooth all the way
- Fully sealed Body & Drag (100% water proof reel)
- No rust Polyester (Metaformaldehyde) Bearing line level pulley
- All Stainless steel alloy for all other metal components
- 10+1 Stainless steel shielded bearings
- Gear ratio 4.1:1

Code	Model	Wt	Gear Ratio	Spool Capacity	Max Drag	B.B.
032-67-500	5000H	520	4.9:1 (87 cm)	Ø 0.33 mm -200 m	20 kg	10+1 SS



PE LINE CAPACITIES

- PE #3 - 280m
- PE #4 - 200m
- PE #5 - 160m

STAINLESS STEEL COMPONENTS
POWERBAIL

EXCEED SPIN

Rugged aluminium body reel, light weight but as tough as iron, less than 500 gr for a 4000 size and still able to spool up to 220 meters of 0.40 line. Anti reverse is permanent with a recovery stainless steel anti reverse pawl to prevent accidents. The fighting handle is fully made of forged aluminium, including the beautiful knob. Drag is absolutely one of a kind and never seen before on reels of the same category of Exceed Salt Water Spin, featuring a 20 Kg Max Drag. An absurd specification for some people but an absolute need for other, ambitious, people. Premium specs also for the stainless steel gears, the bronze pinion salt water protected and the titanium line roller. Line lay

is perfect preventing digging for braided lines and so avoiding dangerous situation when fighting with a big fish. Bailarm is hollow, strong, reliable and lighter than conventional bailarms. Every single part of an Exceed Salt Water Spin is functional to extreme predators fishing.

Code	Model	Wt	Gear Ratio	Spool Capacity	Max Drag	B.B.
032-68-350	3500	348	5.2:1 (85cm)	Ø 0.30 mm - 210 m	12 kg	6+1 SS
032-68-400	4000	480	5.5:1 (105cm)	Ø 0.40 mm - 220 m	20 kg	6+1 SS
032-68-450	4500	480	5.5:1 (105cm)	Ø 0.40 mm - 280 m	20 kg	6+1 SS
032-68-500	5000	596	4.2:1 (91cm)	Ø 0.50 mm - 260 m	20 kg	6+1 SS
032-68-600	6000	596	4.2:1 (91cm)	Ø 0.50 mm - 350 m	20 kg	6+1 SS

FEATURES

- Stainless Steel Oversized Main Shaft
- Stainless Steel Core Drive Gears with non-rust brass Pinion Gear
- Heavy Duty non-rust Alloy Oscillation Gear
- All Stainless Steel Alloy for all other metal components
- 6+1 Stainless Steel Shielded Ball Bearings
- Max Power Drag 20kg (44lb) - 12Kg for 3500 size
- Aluminum Alloy Body / Rotor & Bail Arm Assembly and Bail Holder
- Non reversible large one-way bearing
- Stainless steel backup anti reverse pawl
- Positive-Screw-lock CNC handle & knob
- Stainless steel and carbon textile drag washers, fine adjustment from full release to full lock with super smooth all the way
- Fully sealed Drag (100% Water & Dust Proof drag washers)
- Solid Power Bail 3.3mm wire
- No rust Metaformaldehyde Bearing line level pulley
- AS Titanium Line roller (Anti-Twist)
- Twin Ball bearing spool



STAINLESS STEEL COMPONENTS

POWERBAIL

X-PLORE SW-H



Simone Chiariglione

X-PLORE SW-H

The original design that led us to the production of the very good Xplore reels has been taken to the max using powerful materials to create a new super reel, the new Xplore SW. This strong, powerful reels features a small sized, light weight body entirely made of aluminium. Actually both body and rotor has been made of reinforced aluminium alloy, so the gears can be protected inside this kind of ultra resistant shield. The wide diameter spools, made of aluminium, has been equipped with a titanium lip, to decrease the friction of the line. Also the power handle is made of aluminium, and finished with a fighting knob. The 7+1 bearings are stainless steel, double shielded and salt water proof, so nothing can get in. Two different version of this reel are available: a size 6000, just 470 g and a ratio of 5.9:1, just perfect for salt water spinning, both from the boat and from the shore; a size 7000, 490g, gear ratio 4.9:1 that is intended for light drifting, jigging and bottom fishing.

FEATURES



Code	Model	Wt	Gear Ratio	Spool Capacity	Max Drag	B.B.
033-99-600	6000H	470	5.9:1 (100 cm)	Ø 0.35 mm - 330 m	20 kg	7+1
033-99-700	7000H	490	4.9:1 (95 cm)	Ø 0.40 mm - 330 m	20 kg	7+1
033-99-601	Spare Spool 6000H					
033-99-701	Spare Spool 7000H					



On left, the standard ball bearings are open to get water and salt within balls. On right, the shielded version is totally safe from aggressive agents.



The holes on spool's skirt play the double role to make it lighter and definitely nice.



The upper lip of the spool is remarkably thin and "V" shaped to limit the line friction as much as possible, allowing to get longer casting distances (V Spool Design).



The drag system is sealed and include steel and carbon disks.

SWAT XS

The Trabucco team is developing since years a sophisticated project that gave birth to reels of absolute value such as the Exceed SW and the Exceed Spin. Of course many project has been carried at the same time and after the birth of the first two (the Exceed families), the third one is ready to go now. It is the aggressive Swat XS, a front drag spinning reel for strong emotions, rugged and tough, as in the same tradition that the Exceeds, but also easy to use and really enjoyable. We bet so many people will fall in love of this "gentle war machine"! We are not presenting an allround reel family, good always and everywhere, but a true cranking machine that inside a relatively small and light weight body hides a powerful gears heart. Swat XS gears actually originate from Exceed gears and so they are super reliable in extreme conditions, from medium to big inshore (and fresh water too!) fish to offshore monsters. When using a Swat you must never surrender your wildest dreams!!!

FEATURES



STAINLESS STEEL COMPONENTS

POWERBAIL

CROSS WINDER

ROLLER ANTI-TWIST SYSTEM

Code	Model	Wt	Gear Ratio	Spool Capacity	Max Drag	B.B.
032-51-350	3500	345	5.2:1 (85cm)	Ø 0.30 mm - 340 m	12 kg	6+1
032-51-400	4000	490	5.5:1 (105cm)	Ø 0.40 mm - 220 m	15 kg	6+1
032-51-500	5000	480	5.5:1 (105cm)	Ø 0.40 mm - 280 m	15 kg	6+1
032-51-600	6000	629	4.2:1 (91cm)	Ø 0.50 mm - 260 m	17 kg	6+1
032-51-700	7000	607	4.2:1 (91cm)	Ø 0.50 mm - 350 m	17 kg	6+1
032-51-351				Spare Spool 3500		
032-51-401				Spare Spool 4000		
032-51-501				Spare Spool 5000		
032-51-601				Spare Spool 6000		
032-51-701				Spare Spool 7000		

NEW QOSMIO PG SALTWATER 8000



Even before starting rotation, this reel already gives you a feeling of strength and power, presenting the credentials needed to cope with heavy duties from the cliffs, from the boat and from the banks of the big rivers. The X-Tra Tough hardened graphite body encloses five carbon steel ball bearings, shielded on both faces to close the door to saltwater and dust. The sturdy aluminum spool has a relatively thin upper lip, which provides minimum friction to the fishing line, while the oversized disk drag develops a remarkable power, resisting a tensile force of up to 10 kilos. The handle knob has an asymmetric design to offer a firm grip during the more challenging fights.

FEATURES

- Precise 5 double-shielded carbon steel ball bearings
- High strength engineered extra tough body
- One way clutch instant anti-reverse bearing
- Micro-adjusting Front Drag with oversized washers
- Cold forged long cast superlight aluminium spool
- Double strength stainless steel main shaft
- New shape spool lip allows line to cast easily
- Large diameter aluminium bail wire
- Titanium coated anti-twist line roller
- Computer balanced rotor
- Improved S-curve oscillation system provides even line lay
- Machined aluminium handle with rubber grip



ONEWAY CLUTCH

POWERBAIL

CROSS WINDER

S-B-S Super Balance System

ROLLER ANTI-TWIST SYSTEM

Code	Model	Wt	Gear Ratio	Spool Capacity	Bob.Extra	B.B.
032-71-800	8000	770	4.5:1 (101 cm)	Ø 0.40 - 280 m	1	5+1



AIRBLADE POWER SW



AIRBLADE POWER SW

The Trabucco team is increasingly engaged in the research of new technological solutions that can give the reels something extra, possibly improving the quality of the experience of all anglers. The Air Blade Power SW is yet another project carried out with pride, that extends to the sea fishing most demanding techniques the know how accumulated in previous years with the Airblade concept. The reel is entirely built from aluminum and its body is sealed by a rubber gasket which prevents any infiltration of water. To maximize this type of insulation of the gears, on the body is not present a single screw, also to the advantage of the general strength. All bearings are Long Life stainless steel type to be practically eternal. The handle has been provided with a fighting knob to better manage the remarkable ranking power. Available in two models, the Airblade SW Power has won the trust of the sea spinning fans, especially those who engage particularly powerful predators like Bluefish.

FEATURES



STAINLESS STEEL COMPONENTS



POWERBAIL



USB ULTRA SLIM BODY DESIGN

Code	Model	Wt	Gear Ratio	Spool Capacity	Max Drag	B.B.
033-71-500	4500	480	4.9:1 (81 cm)	Ø 0.35 mm - 245 m	7 kg	7+1
033-71-600	6000	490	4.9:1 (89 cm)	Ø 0.40 mm - 240 m	7 kg	7+1
033-71-501			Spare Spool 4500			
033-71-601			Spare Spool 6000			



The handle folds instantaneously, thanks to the one touch button.



The metal rotor has been drawn by computer to reduce weight and improve balance as well.



Body profile is ultraslim and has no external screws.

MAXXIS SEARIDER



MAXXIS SW GAME

Compact design, strong and reliable range of reels designed for saltwater fishing. The X-Tra Tough Body and rotor are made from a special blend of graphite, stronger and lighter than regular materials. To increase the torque resistance under maximum load, the bail arms are built by solid aluminium, so that line roller works in optimum conditions. The high performance drag system is completely sealed and based on PTFE washers to guarantee high smoothness and progression from minimum to the highest setting. All ball bearings are sealed, while gears and metal parts are Saltwater Proof, and the body has been sealed for additional protection. The aluminium Powerbail is hollow and made by one piece only, so lighter and stronger than any other on the market. The gear ratio of 4.8:1 is perfect for the light to medium jigging, kabura fishing and medium spinning, while the aluminium CNC handle is strong and lightweight and ends with a "custom" Eva Knob, ergonomic and able to guarantee optimal grip in all conditions.



The drag system is sealed to avoid water and salt intrusion.



The Powerbail include a tapered link to Anti Twist line roller, which is Titanium coated.

FEATURES

-
-
-
-
-
-
-
-
-
-

Code	Model	Wt	Gear Ratio	Spool Capacity	Bob.Extra	B.B.
032-78-550	5500	530	4.8:1 (84 cm)	14 lb - 190 m	-	7+1
032-78-650	6500	552	4.8:1 (90 cm)	14 lb - 220 m	-	7+1
032-78-800	8000	579	4.8:1 (94 cm)	17 lb - 235 m	-	7+1



SEARIDER SW

NEW

An essential reel, free from frills but sturdy, especially convenient from the economical point of view, taking into account its interesting technical features. First of all, the saltwater treatment, precious ally to those who enjoy fishing at sea, from the shore as well as from the boat. Then the Worm Shaft, coupled to the slow vertical oscillation of the spool, which govern the line spooling according to crossed paths, constituting the best prerequisite for clean, fast release and a consequent perfect cast. The gear ratio is relatively slow to develop an impressive cranking power without dispersion and without jamming, a feature that is especially appreciated in boat fishing.

FEATURES

- 2 Long Life Ball Bearing
- 1 Roller Bearing
- Infinite Anti Reverse «One Way» System
- Worm Shaft + S.O.S. System
- Long Cast Aluminium Spool
- CNC Fighting Handle With
- Ergonomic Soft Knob
- Micro-adjusting Front Drag with oversized Drag Washers
- Anti Twist Line Roller

-
-
-
-
-
-
-
-
-
-
-

Code	Model	Wt	Gear Ratio	Spool Capacity	Bob.Extra	B.B.
034-24-650	6500	630	4.1:1 (86 cm)	Ø 0.40•275 m	1	2+1
034-24-800	8000	660	4.1:1 (91 cm)	Ø 0.50•310 m	1	2+1

MAXEL

ENGINEERED EXCELLENCE

Trabucco is the official distributor of the trolling and vertical jigging Maxel multiplier reels on the Italian market.

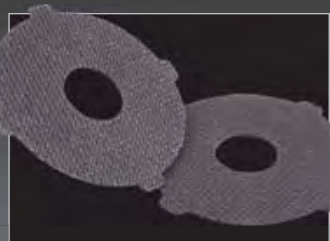


SEALION OB

An Hi-Tech multiplier designed for trolling and specifically with braided lines. This is the right model to fish with the downrigger and with the drift lead; in fact, it features an increased capacity spool, granting the possibility to spool enough meters of the big diameter braided required. It is evident that for other specifications we did not change the good specs that made the Sea Wolf and the Sea Lion the best multipliers to be used on a boat. So also the Sea Lion OB features a machined 6061-T6 aluminium frame. This one piece piece frame is the best warranty you can have about the solidity and the reliability of the reel. All the gears are made from stainless steel, the only material that can last for countless years in an aggressive and salty environment. The spool and the side covers are made of cold forged aluminium, to keep them light weight but still very strong. The lever drag and the handle have ergonomic shape and are easy to access, because when you are fighting a big fish everything must be just handy. If you summarize what a Maxel OB is giving you: light weight, ergonomic design, 100% salt water proof, stainless steel and carbon drag washers, eight double shielded stainless steel bearings and much more, you will understand why we are giving 5 years warranty. Because a Maxel reel is made for fishing and it will do it well for a long, long time.



Code	Model	Gear Ratio	Spool Capacity	Max Strike Drag	Max Full Drag	B.B.
030-01-206	06LH	4.5 : 1	310 m - 20 lb	5 kg	6 kg	8+2
030-01-209	09RH	4.5 : 1	410 m - 20 lb	8 kg	10 kg	8+2
030-01-211	11RH	4.5 : 1	545 m - 20 lb	9 kg	11 kg	8+2



CARBON DRAG SYSTEM. Maxel unique Carbon Drag system delivers wide range and smooth operation at all settings. The contaminant resistant carbon surfaces are treated with a precise amount of specially formulated MAXEL drag grease that resists water absorption and maintains powerful drag settings. Constant, steady friction and excellent heat displacement are assured through the drag surface design.



ERGO POWER KNOB. Maxel ergonomically shaped power knob provides maximum power with minimum fatigue for the game angler. The power knob takes full advantage of the natural dynamics of the human hand, wrist and forearm to help sustain power and endurance for the game angler.



4 SHIELDED
SS BALL
BEARINGS

The gold anodized dress is a traditional classic in the multiplier trolling reel's market, while the Maxel structure and engineering are the most advanced the industry can now offer to the keen anglers who look for the best only. Total reliability and strength are the two main targets which have driven the development and production of these reels, along with unique design, precision engineering and totally saltwater proof materials. Each single component has been created to get the best performance, starting from one-piece frame, machined from solid 6061-T6 tempered aluminium, well known in the aerospace and naval industry for the torque resistance property, up to consider stainless steel gears, aluminium spool and sealed ball bearings. SeaWolf reels are available in the range of 20-50 lbs, all featuring double speed and an extremely powerful and progressive drag, based on carbon disks to deal with the fastest runs of big sea fish.



The exclusive ergonomic T-Bar handle is able to provide maximum cranking power with minimal effort. T-Bar actually makes the most of hand, wrist and forearm. Construction material has been chosen not to burn hands even if sun exposed during Summertime.



FEATURES

- 6061-T6 machined one piece aluminum frame
- Cold forged aluminum spool and side plates
- Precision-machined stainless steel gears
- Carbon-based contaminant-resistant drag materia
- 4 shielded stainless steel ball bearings
- Extremely tight tolerance to prevent line eating
- Heavy duty stainless steel ratcheting clicker design
- Heavy duty stainless steel drive and spool shafts
- CNC aluminum anodized reel foot
- Main shaft bearing stabilizer prevents excessive side pressure on spool bearings
- New power T-Bar handle for increased comfort and torque
- Stainless steel rod clamp and harness lugs
- Serialized identification

Code	Model	Gear Ratio	Spool Capacity	Max Strike Drag	Max Full Drag	B.B.
030-00-020	SW20	4.3:1 / 1.7:1	20 lb / 690 yds	12.2 kg	14.2 kg	4
030-00-025	SW30W	4.3:1 / 1.7:1	30 lb / 700 yds	12.4 kg	14.5 kg	4
030-00-030	SW30WL	4.3:1 / 1.7:1	50 lb / 570 yds	12.4 kg	14.5 kg	4
030-00-050	SW50W	3.6:1 / 1.3:1	50 lb / 850 yds	16.6 kg	21.6 kg	4



MACHINED RIGID FRAME. Aircraft grade aluminum construction incorporating Maxel rigid machine technology. All Maxel reels feature a strong, rigid, one-piece fully machined aluminum frame. These monolithic bar-stock frames not only keep the moving parts in precise alignment, but also maintain exacting control tolerances under heavy loading while fighting big fish.



HIGH-TECH COLD FORGED SPOOLS. Thanks to Maxel expertise and the latest cold forging technology applied during productions stages, the super strong, cold forged aluminum spool and side plates stand up to line pressure and hard fighting stresses.



ANTI CORROSION STAINLESS STEEL BEARINGS.

Maxel use top quality shielded stainless steel ball bearings assure corrosion resistance and smooth operation on line release and recovery.

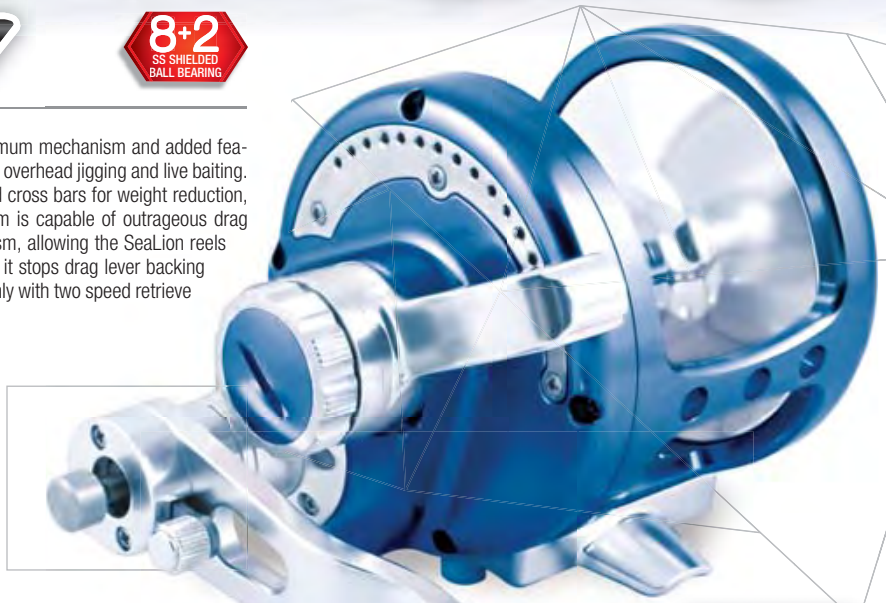


SEALION

8+2
SS SHIELDED
BALL BEARING

Incorporating Maxel's precision engineering technology, designed with optimum mechanism and added features, the SeaLion series will give anglers more confidence and power during overhead jigging and live baiting. The SeaLion reels are made from 6061-T6 tempered aluminum with ported cross bars for weight reduction, and wider spool for larger line capacity. The upgraded carbon drag system is capable of outrageous drag pressures, plus the improved pre-set knob and lever drag control mechanism, allowing the SeaLion reels more precise and consistent drag setting. Also with fulcrum clicker design, it stops drag lever backing off while jigging. The SeaLion series features 2 sizes 8Lb e 10Lb available only with two speed retrieve and with right or truly left handle version to choose from.

2-SPEED GEARING. Maxel 2-Speed system consists of two sets of stainless steel main and pinion gears, allowing anglers the option of a high-speed ratio or a power ratio for maximum torque. Maxel shifting system is designed to operate in a simple and reliable way, just push the shift button and handle in for low gear, offering you the power to fight big game fish; push button and pull handle out so as to switch back to high speed ratio for quick line recovery.



PRE-SET & DRAG LEVER. Maxel pre-set knob and drag lever are designed user-friendly for precise and constant drag settings from FREE (no drag pressure), to STRIKE (where you fight the fish), until FULL (provides extra drag pressure when you need it). Turn the pre-set knob clockwise for more drag pressure, counter-clockwise for less drag pressure.



FEATURES

- 6061-T6 machined one piece aluminum frame
- Cold forged aluminum spool and side plates
- Precision-machined stainless steel gears
- Contaminant-resistant carbon drag material with special grease
- With fulcrum clicker design to stop drag lever backing off
- Oversized shielded stainless steel ball bearings for better support and strength
- Slim frame and narrow spool increased 10% more line capacity
- Newly designed balance handle to minimize the jigging vibration
- Excellent free spool
- Serialized identification



Code	Model	Gear Ratio	Spool Capacity	Max Strike Drag	Max Full Drag	B.B.
030-01-008	SL08LH	4.5:1 / 2.1:1	20 lb / 330 yds	7.0 kg	8.5 kg	8+2
030-01-010	SL10LH	4.5:1 / 2.1:1	20 lb / 495 yds	8.0 kg	10.0 kg	8+2
030-01-108	SL08RH	4.5:1 / 2.1:1	20 lb / 330 yds	7.0 kg	8.5 kg	8+2
030-01-110	SL10RH	4.5:1 / 2.1:1	20 lb / 495 yds	8.0 kg	10.0 kg	8+2

Simone Chiariglione



MERIDIAN GT



Meridian trolling reels are the perfect complement for Meridian Fighter Stand Up rods, and are a good and versatile option for Mediterranean trolling. Graphite body is salt water resistant and side plates are reinforced by a stainless steel ring, to strengthen the whole chassis. Handle and spool are anodized aluminium. So the reel can be spooled with braided line. The smooth drag has a Max Drag of 20 lbs and can be set up very carefully. 3+1 stainless steel shielded bearings. Fighting handle with power knob.

Code	Model	Wt	Gear Ratio	Spool Capacity	Best Drag	B.B.
030-50-300	330	470	4.1:1	Ø 0.45 mm - 320 m	20 lb	3+1

NEPTUNE SR



Family of easy to use, long lasting and reliable conventional reels. Two models, 15/30 and 20/40 sharing the bigger part of specs, with the exception of the Max Drag, being 20 lbs for the smaller size, and 30 lbs for the bigger one. All the gears are salt water treated and perform a 3.8:1 gear ratio, the correct compromise between speed and power. The spool, and the handle too, is made from anodized aluminium, so it can be used with braided lines. Both sizes feature level wind for an easy use and perfect line lay. Graphite body is light weight and corrosion resistant. 3 stainless steel shielded bearings.

Code	Model	Wt	Gear Ratio	Spool Capacity	Best Drag	B.B.
030-55-200	15 / 30	485	3.8:1	Ø 0.45 mm - 200 m	20 lb	3
030-55-300	20 / 40	520	3.8:1	Ø 0.45 mm - 260 m	30 lb	3

