

# LINES & BRAIDED

*First of all, the contact with bait or lure, then link to the fish. Not a mere accessory, but a vital piece of tackle, which deserves the best attentions. Line and fishing are actually inseparable.*

## DYNA TEX

PE braided lines with great strength per diameter, thanks to the high number of strands the profile is rounder, avoiding the line digging in the spool.



Series of monofilaments super resistant to shocks and knots, always reliable and top quality. A timeless classic of Italian fishing style.



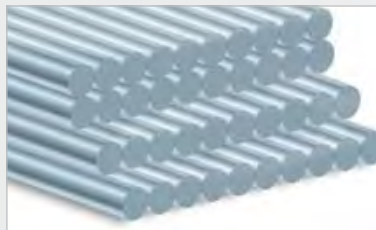
## Diamond

A true hi spec competition line. Quality and performance always consistent. It is just the best way to build super strong and totally invisible hook length.

## MAXPLUS

A new range, specialized in the most common fresh and saltwater uses. Total reliability and a plus: the side cover which include the hole to hang each spool in the shop.

## TPS TRABUCCO PARALLEL SPOOLING



Just after extrusion process, which converts the raw material into the final product commonly known as fishing line, the monofilament must already face some enemies, which tend to affect its integrity and degrade its quality. Ultra-violet rays get it older, decreasing its linear strength; the humidity is a critical factor, as it shouldn't

be too low, nor too high, because it has some influence on flexibility of the product and on its stretch properties. All elements which count a lot in term of specification's stability during the line's life, important details to whom Trabucco production pays a lot of care and attention. But there is a factor that, more than the others, can actually cast a dark shadow on to line's performances, and such point is the spooling process. When the monofilament gets from the big spools to commercial, small ones, the machines involved in the operation can induce abnormal tension and torque, up to "loading" the line with a stress that will be given us back when we will wind it on to the reel's spool or when we will use it to build up a rig or an hooklink. The solution used by Trabucco to overcome this problem on high end lines is the parallel spooling, a special process which cannot be applied on the whole range due to longer time process that, in the end, causes cost's increase. A very special machine lays every coil parallel to the previous one under high precision and minimal tension, without inducing any torsion and generating the fantastic effect which everybody can see through a magnifying glass. Excess of accuracy? Maniacal care? Nothing wrong, because only in this way the line will come off the spool with unchanged specifications, the best precondition to get the optimum from it, with less tendency to tangle and with a smooth flow through rod's guides.

## XPS

Hi-Tech monofilaments of the latest generation, each series is dedicated to a specific fishing techniques and it is essential due to its unique structure.



Super soft and abrasion resistant monofilaments, the best for spooling your reels. Specific lines available for Match, Surf Casting, Predator, Feeder and, generally, for all the techniques that need long casting performance.

## SUPER ELITE

The highest quality monofilament in the world. You will never find on the market any other monofilament with such a high strength test.

## NEW X8 EXTREME

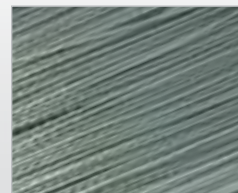
A super braid based on eight filaments of Polyethylene with high modulus of elasticity. Its structural compactness generates a number of benefits immediately perceptible while fishing, such as the uniformity of diameter and circularity of the cross section, the fluid flow in the rod's rings and the consequent greater casting distance, the enormous tensile strength and the superb sensitivity. All these values coexist with great softness and the absence of memory, and it is this combination which pushes the Dyna-Tex X8 a step higher than similar products. And that's not all! The fantastic package which houses the spool allows it to rotate inside, offering the possibility to transfer the braided line to the reel's spool without opening the protective shell. The spooling tension can be varied by applying a certain pressure with the hand that holds the container. The fluo orange colour aids visibility of the line.

Code	Ø	⚖	🐟	135m / 150 yds
054-36-100/4	0.10	9.07	20.00	
054-36-120/4	0.12	11.34	25.00	
054-36-150/4	0.14	12.70	28.00	
054-36-180/4	0.18	13.61	30.00	
054-36-200/4	0.20	15.88	35.00	
054-36-260/4	0.26	18.14	40.00	
054-36-310/4	0.31	22.68	50.00	

## FUSION BRAID

## DYNA TEX

Made using the latest Japanese technology, Dyna-Tex Fusion Braid is produced with high tension procedure which allows to obtain more compact fibers that can be better spooled on the reel, drastically reducing the possibility of tangles. The special coating provides exceptional abrasion resistance and a much smoother surface than the classical braided lines. This protects the guides, ensuring durability of the line and extreme casting performance. The total absence of elasticity allows you to immediately set the hooks even when fishing at extreme distance. Available in smoke grey from diameter 0,10 to 0,30 in a classy spool of 100m.



Code	Ø	⚖	🐟	100m / 110 yds
054-43-100/10	0.10	5.44	12	
054-43-120/10	0.12	6.80	15	
054-43-150/10	0.15	8.16	18	
054-43-180/10	0.18	9.07	20	
054-43-200/10	0.20	11.34	25	
054-43-250/10	0.25	13.61	30	
054-43-300/10	0.30	18.14	40	

# DYNA TEX

## FEATURES

- 8 braid made from high Modulus PE fibers
- Extreme structural compactness
- Round cross section
- High breaking strength and sensitivity
- Very high knot strength
- Great softness
- Smooth flowing through rod's guides
- No memory
- Special spool with adjustable tension
- Fluo orange colour



## POWER SILK

## DYNA TEX

Multi-fiber Dyna-Tex braided line, very tightened weaving to achieve a rounder profile. External surface has been treated to achieve a silk like finishing, very comfortable and enjoyable during fishing sessions, when the braided passes through the guides of the rod with minimized friction. Breaking strength printed on label are reported to plain knot. More technical fishing knots will easily achieve higher breaking strength. Spool delivered in thick plastic box for better storage.



Code	Ø	⚖	🐟	
054-37-080/10	0.08	3.63	8.00	100m / 110 yds
054-37-100/10	0.10	4.54	10.00	
054-37-120/10	0.12	5.45	12.00	
054-37-140/10	0.14	6.81	15.00	
054-37-160/10	0.16	9.08	20.00	
054-37-200/10	0.20	13.62	30.00	

## NEW POWER SILK FEEDER BRAID DYNA TEX

Specially developed for feeder fishing, this braided line is a combination of super strong Dyna Tex fibers and other heavier ones, which make this line sink perfectly and lay on the bottom. Such behaviour is well appreciated in feeder fishing, as it drops those line bows for ever. Therefore, the strike is neat, powerful and hook setting is very accurate: up to yesterday, just a nice dream. The available diameters allow to face all possible fishing conditions with a very high abrasion resistance and a round cross section. A shock leader twice long as the rod itself is highly recommended, maybe made from XPS Match Reel.



Code	Ø	⚖	🐟	
054-39-106/6	0.06	2.70	6.00	150m / 165yds
054-39-108/6	0.08	3.60	8.00	
054-39-110/6	0.10	4.50	10.00	
054-39-113/6	0.13	5.40	12.00	



# FLUORO CARBON



Code	Ø	⚖	🐟	
053-60-060/10	0.065	0.55	1.21	50m
053-60-070/10	0.074	0.63	1.38	
053-60-080/10	0.084	0.99	2.18	
053-60-090/10	0.098	1.34	2.95	
053-60-100/10	0.104	1.45	3.19	
053-60-120/10	0.125	1.60	3.52	
053-60-140/10	0.145	2.10	4.63	
053-60-160/10	0.164	2.58	5.67	
053-60-180/10	0.185	3.21	7.08	
053-60-200/10	0.201	3.85	8.48	
053-60-220/10	0.220	4.41	9.72	
053-60-240/10	0.240	5.31	11.70	
053-60-260/10	0.260	6.44	14.18	
053-60-280/10	0.280	7.16	15.78	
053-60-300/10	0.300	7.72	17.02	

053-59-080/10	0.084	0.99	2.18	25m
053-59-090/10	0.098	1.34	2.95	
053-59-100/10	0.104	1.45	3.19	
053-59-120/10	0.125	1.60	3.52	
053-59-140/10	0.145	2.10	4.63	
053-59-159/10	0.164	2.58	5.67	
053-59-180/10	0.185	3.21	7.08	
053-59-200/10	0.201	3.85	8.48	
053-59-220/10	0.220	4.41	9.72	
053-59-240/10	0.240	5.31	11.70	
053-59-259/10	0.260	6.44	14.18	
053-59-280/10	0.280	7.16	15.78	
053-59-300/10	0.300	7.72	17.02	



Made from 100% fluorocarbon, this line is particularly soft, abrasion resistant and well sinking. Its main characteristic is the very low light refraction index, which makes it almost invisible in water. Remarkably waterproof, it keeps the original breaking strength - already higher than the average - even after a long time of stay in water. Perfect for hooklinks destined either to fresh or salt water, it is totally UV resistant for a longer life. From now, beyond the traditional 50 m spools, it is also available in 25 m version.

# MATCH STRONG



Electronically controlled to ensure accurate and consistent diameter, this match line features unrivalled knot strength and softness. The clear, dichroic colour makes it perfect to build hooklinks and rigs for freshwater as well as saltwater. The advanced spooling process, based on perfectly parallel winding, enables to avoid those dangerous torsions which affect strength and casting distances, making the line virtually tangle free. Today, the successful XPS Match Strong family grows with the addition of new 25 metres spools, surely destined to succeed in the hooklink field, also in feeder fishing segment.

Code	Ø	⚖	🐟	
053-82-080/10	0.084	1.00	2.20	25m
053-82-100/10	0.104	1.60	3.52	
053-82-120/10	0.121	2.30	5.07	
053-82-140/10	0.143	2.95	6.50	
053-82-160/10	0.162	3.98	8.77	
053-82-180/10	0.181	5.10	11.23	
053-82-200/10	0.203	5.95	13.11	



Code	Ø	⚖	🐟	
053-80-060/10	0.064	0.66	1.45	50m
053-80-070/10	0.072	0.74	1.63	
053-80-080/10	0.084	1.00	2.20	
053-80-090/10	0.091	1.18	2.60	
053-80-100/10	0.104	1.60	3.52	
053-80-120/10	0.121	2.30	5.07	
053-80-140/10	0.143	2.95	6.50	
053-80-160/10	0.162	3.98	8.77	
053-80-180/10	0.181	5.10	11.23	
053-80-200/10	0.203	5.95	13.11	
053-80-220/10	0.221	6.83	15.04	
053-81-250/10	0.251	8.67	19.10	30m
053-81-280/10	0.283	9.98	21.98	
053-81-300/10	0.307	12.72	28.02	

Code	Ø	⚖	🐟	
053-78-100/10	0.104	1.60	3.52	100m
053-78-120/10	0.121	2.30	5.07	
053-78-140/10	0.143	2.95	6.50	
053-78-160/10	0.162	3.98	8.77	
053-78-180/10	0.181	5.10	11.23	
053-78-200/10	0.203	5.95	13.11	
053-78-220/10	0.221	6.83	15.04	
053-78-250/10	0.251	8.67	19.10	
053-78-300/10	0.307	12.72	28.02	
053-78-350/10	0.350	15.90	35.00	
053-78-400/10	0.400	18.17	40.00	
053-78-500/10	0.500	22.72	50.00	
053-78-600/10	0.600	36.34	80.00	

## POWER PLUS



Last generation monofilament to create low visibility, high strength hook links. Polymeric chains that form the core of the line are longer and more powerful, giving as a final result a tougher and softer line, for a perfect presentation of bait. XPS Power Plus has a nice packaging with a PVC trade box containing another thick plastic box with line retainer to better preserve quality line from light and dirt.

Code	Ø	⚖	🐟	
053-83-080/10	0.084	1.07	2.36	50m
053-83-090/10	0.094	1.26	2.78	
053-83-100/10	0.104	1.71	3.77	
053-83-120/10	0.121	2.46	5.42	
053-83-140/10	0.143	3.16	6.95	
053-83-160/10	0.162	4.26	9.38	
053-83-180/10	0.183	5.46	12.02	
053-83-200/10	0.203	6.37	14.02	
053-83-220/10	0.221	7.31	16.10	
053-83-250/10	0.251	9.28	20.43	
053-83-280/10	0.283	10.68	23.52	
053-83-300/10	0.307	13.61	29.98	

## LUCIFER LINE

The Lucifer is a brand very famous within the angling fans of England by many years. Under this brand name we have produced a wide range of specific product for the commercial fisheries and carps in general. Ideal for making rigs and even used as mainline. It is a pretty rigid monofilament, with total absence of memory and sealed by water absorption by the innovative ceramic coating process, new for this season. Crystal clear color. Offered in spool of 50mts, and packed into a beautiful Japan styled box. Spooled in parallel.



Code	Ø	⚖	🐟	
053-30-100/10	0.100	1.50	3.30	50m
053-30-120/10	0.120	2.15	4.74	
053-30-140/10	0.140	2.85	6.28	
053-30-160/10	0.160	3.80	8.37	
053-30-180/10	0.180	4.65	10.42	
053-30-200/10	0.200	5.60	12.34	



Code	Ø	⚖	🐟	
053-25-100/10	0.10	1.50	3.30	100m
053-25-120/10	0.12	2.15	4.74	
053-25-140/10	0.14	2.85	6.28	
053-25-160/10	0.16	3.80	8.37	
053-25-180/10	0.18	4.65	10.24	
053-25-200/10	0.20	5.60	12.34	
053-25-220/10	0.22	6.46	14.23	
053-25-250/10	0.25	8.46	18.61	
053-25-280/10	0.28	9.65	21.26	
053-25-300/10	0.30	12.07	26.55	
053-25-350/10	0.35	14.40	31.72	
053-25-400/10	0.40	18.90	41.63	
053-25-500/10	0.50	27.00	59.47	

## MATCH PRO



Crystal clear colored. Another version of line introduced in late 2005 that have been claimed as one of the best long pole and fishing to hand monofilament ever produced. The new ceramic technology launched by the T-Force laboratories has immediately encountered the approval of all anglers worldwide, as it gives an incredible knot resistance and linear strength. It is recommended as mainline for long pole and line to hand fishing, as well as for the rig making. The ceramic coating also seal completely the nylon core making it 100% waterproof without increasing the diameter, like happen usually with the normal silicone coatings. Another evidence of the superior technology of the T-Force laboratories, that have been always years ahead of the competitors. Offered in spools of 100 and 300mts packed into the new Japan styled box.

Code	Ø	⚖	🐟	
053-26-100/10	0.10	1.50	3.30	300m
053-26-120/10	0.12	2.15	4.74	
053-26-140/10	0.14	2.85	6.28	
053-26-160/10	0.16	3.80	8.37	
053-26-180/10	0.18	4.65	10.24	
053-26-200/10	0.20	5.60	12.34	
053-26-250/10	0.25	8.46	18.61	
053-26-300/10	0.30	12.07	26.55	

## SOFT FEEL



The latest generation of high resistance monofilaments issued by the T-Force technology the World's leading producer of hi-tech fishing monofilaments. With its strength exceeding even extreme limits this line also features a total memory absence. XPS Soft Feel is an ultra-supple monofilament specifically developed for all styles of reel fishing. It's a floating line so it's particularly suited to Bolognese both for fresh and saltwater uses. Its smoothness helps the flowing from the reel spool during casts, without any kind of torsion and increasing casting distances. The ceramic coating of the nylon polymer core, makes this line completely waterproof and totally memory-free.

Code	∅	⚖	🐟
053-88-120/10	0.128	2.20	4.85
053-88-140/10	0.148	2.92	6.43
053-88-160/10	0.165	3.89	8.57
053-88-180/10	0.181	4.76	10.48
053-88-200/10	0.203	5.74	12.64
053-88-220/10	0.234	6.82	14.58
053-88-250/10	0.251	8.67	19.10
053-88-280/10	0.283	9.89	21.78
053-88-300/10	0.307	12.37	27.25

## MATCH REEL



Smoke grey colored new monofilament, of last generation, developed for all kind of reel fishing styles. The particular technical qualities of these new nylon resins and polymers, allow to a better flow into the guides, superior to any other high quality reel line in the market. It also helps the flowing out from the reel spool, without any kind of torsion. The ceramic coating of the nylon polymer core, makes this line completely waterproof and cancel any kind of memory. Despite its strength, the new Match Reel is supple and soft. It is spooled in parallel, in 150mt spools packed into a new Japan style box, very classy. It is truly one of the best specific reel line, that combine the greatest flowing and abrasion capacity together the legendary and even improved resistance of all T-Force monofilaments.

Code	∅	⚖	🐟
053-28-120/10	0.128	2.15	4.74
053-28-140/10	0.148	2.85	6.28
053-28-160/10	0.165	3.80	8.37
053-28-180/10	0.181	4.65	10.24
053-28-200/10	0.203	5.60	12.34
053-28-250/10	0.255	8.46	18.63
053-28-300/10	0.309	12.07	26.57



## WINTER ICE



The soft ring provided with each spool enables to pick up any needed quantity of line, avoiding damages to the rest of the product.

New line made through a very special production process, which integrate nano-particles of ceramic into a polymer matrix. Those particles, well known in the industry for their properties to resist any sharp step in temperature, protect the line's core in ice-cold conditions, which are the worst enemy of line's softness and breaking strength. The external

fluorocarbon layer adds protection from abrasion, UV rays and aggressive agents. The final result is an extremely high performance line, destined to draw the attention of the northern European anglers who fish on ice, as well as the continental ones who like trout fishing, and who will appreciate its resistance to cut. Each spool is supplied with a soft, elastic

Code	∅	⚖	🐟
053-33-080/10	0.08	1.00	2.20
053-33-100/10	0.10	1.60	3.52
053-33-120/10	0.12	2.30	5.07
053-33-140/10	0.14	2.95	6.50
053-33-160/10	0.16	3.98	8.77
053-33-180/10	0.18	5.10	11.23
053-33-200/10	0.20	5.95	13.11
053-33-250/10	0.25	8.67	19.10
053-33-300/10	0.30	12.72	28.02

ring which enables to pick up the needed segment of line; a typical sign of attention to user's needs, which marks the Trabucco production since ever.

## MATCH SINKING

Japanese production monofilament made especially for waggler or feeder fishing. The main feature of this innovative monofilament is its high specific weight which allows it to sink extremely easily. Special surface treatment ensures high abrasion resistance and total absence of memory, both fundamental for this type of fishing where the line is subject to great stress. The special molecular composition ensures low elasticity for rapid, sure strikes. Parallel wound to better preserve its incredible characteristics. 150 & 300m spools.



TPS

Code	∅	⚖	🐟
053-85-120/10	0.128	2.05	4.52
053-85-140/10	0.148	2.70	5.95
053-85-160/10	0.165	3.60	7.93
053-85-180/10	0.181	4.43	9.76
053-85-200/10	0.203	5.30	11.67
053-85-250/10	0.255	7.95	17.51
053-85-300/10	0.309	9.78	21.54

150m

Code	∅	⚖	🐟
053-86-120/10	0.128	2.05	4.52
053-86-140/10	0.148	2.70	5.95
053-86-160/10	0.165	3.60	7.93
053-86-180/10	0.181	4.43	9.76
053-86-200/10	0.203	5.30	11.67
053-86-250/10	0.255	7.95	17.51
053-86-300/10	0.309	9.78	21.54

300m

## FEEDER PLUS



Feeder fishing is becoming more and more popular, that's why we introduce an upgraded monofilament specifically designed. We paid a lot of attention to abrasion resistance and sinking ratio, two of the most important features for a feeder line, obtaining what's probably the best line actually on the market. Stretching is significantly reduced to detect even the most delicate bites at long distance. In a camouflage color to match the lakedbed.

TPS XPS T-FORCE

Code	∅	⚖	🐟
053-95-180/10	0.181	3.61	8
053-95-200/10	0.203	4.51	10
053-95-220/10	0.221	5.68	13
053-95-250/10	0.251	7.03	15
053-95-300/10	0.307	9.86	22

150m

## TROUT

This new transparent monofilament is dedicated to all the people who loves fishing for trout in lakes or in natural waters. Its color makes it perfect for use especially in crystal clear water. The special manufacturing procedure used makes it extremely resistant to twisting and the extremely smooth surface allows to reach incredible casting distance even using lightweight lures or rigs. Available in five different diameters on 150 meters spool.



TPS XPS T-FORCE

Code	∅	⚖	🐟
053-93-160/10	0.165	2.73	6
053-93-180/10	0.181	3.61	8
053-93-200/10	0.203	4.51	10
053-93-220/10	0.221	5.68	13
053-93-250/10	0.250	7.03	15

150m

## BLACK BASS



This new dark green colour monofilament has been developed for Black Bass fishing, highly demanded by the US market and also from Europe during the last years. It is the strongest polymer ever produced by the T-Force laboratories, with a very low stretch capacity, softer than any other specific spinning line, and it offers the right technical features that allow the angler to more accurate and longer casts. The absence of elasticity gives the "direct bait control" allowing to have the faster strike capacity you have ever experienced. It is parallel spooled in 150mt spools individually packed.

Code	Ø	⚖	🐟	150m
053-05-200/10	0.200	5.45	12.00	
053-05-220/10	0.220	6.95	15.31	
053-05-250/10	0.250	8.36	18.41	
053-05-300/10	0.300	11.95	26.32	
053-05-350/10	0.350	15.80	34.80	

## SPINNING PIKE



Another specific spinning monofilament. We have used the qualities of the Black Bass but in this version we have increased the abrasion resistance, in order to offer the greatest resistance to the jaws of those big Pikes. The absence of elasticity allow the immediate strike, and also helps the reel drag during the fight. dark green colored, offered in spools of 150mts, parallel spooled and individually packed from diameter 0,16 up to 0,35mm.



Code	Ø	⚖	🐟	150m
053-55-160/10	0.160	3.65	8.04	
053-55-180/10	0.180	4.50	9.91	
053-55-200/10	0.200	5.45	12.00	
053-55-220/10	0.220	6.95	15.31	
053-55-250/10	0.250	8.36	18.41	
053-55-300/10	0.300	11.95	26.32	
053-55-350/10	0.350	15.80	34.80	



## CARP ENDURO



A carp fishing Japanese production monofilament. Principal characteristic of this monofilament is the high specific weight that allows to sinking with extreme facility. The surface treatment guarantees besides, a high resistance to the abrasion and a complete absence of memory, fundamental in these types of fishing in which the mainline is submitted to strong stresses. The molecular composition guarantees a low degree of elasticity, that allows a strong rapids and sure hook setting. Spools comes in parallel winding to preserve to the best his unbelievable characteristics.



Code	Ø	⚖	🐟	300m
053-11-250/6	0.255	8.36	18.41	
053-11-280/6	0.286	9.80	21.59	
053-11-300/6	0.309	11.95	26.32	
053-11-320/6	0.325	13.85	30.51	
053-11-350/6	0.354	15.80	34.80	
053-11-400/6	0.405	21.15	46.59	

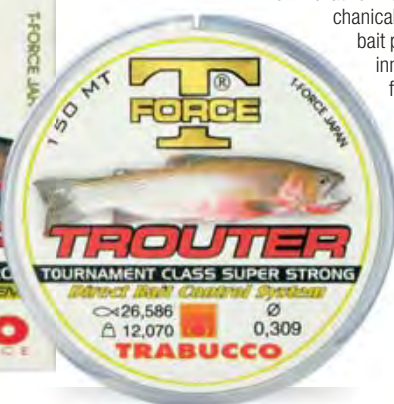
Code	Ø	⚖	🐟	600m
053-12-250/6	0.255	8.36	18.41	
053-12-280/6	0.286	9.80	21.59	
053-12-300/6	0.309	11.95	26.32	
053-12-320/6	0.325	13.85	30.51	
053-12-350/6	0.354	15.80	34.80	
053-12-400/6	0.405	21.15	46.59	

Code	Ø	⚖	🐟	1200m
053-13-250/1	0.255	8.36	18.41	
053-13-280/1	0.286	9.80	21.59	
053-13-300/1	0.309	11.95	26.32	
053-13-320/1	0.325	13.85	30.51	
053-13-350/1	0.354	15.80	34.80	
053-13-400/1	0.405	21.15	46.59	

# TROUTER



The innovative line structure combined with the external silicone coating, reduces the mechanical memory of the line maintaining a great softness, ideal for a correct bait presentation. Completely impermeable, the particular coating isolates the inner line structure from external agents, preserving the line characteristics for a long time and also in the lowest temperatures. The frictions are reduced to the minimum allowing long castings and reducing to the least one the abrasion against the guides. The transparent colour maintains low refraction degree in all kinds of waters.



Code	∅	⚖	🐟	150m
053-52-140/10	0.140	2.85	6.28	
053-52-160/10	0.160	3.80	8.37	
053-52-180/10	0.180	4.65	10.24	
053-52-200/10	0.205	5.60	12.36	
053-52-220/10	0.227	7.05	15.53	
053-52-250/10	0.255	8.46	18.63	
053-52-300/10	0.309	12.07	26.59	

# SPINNING PERCH



Monofilament expressly developed for Perch fishing both with live or dead baits or spinning. It comes in a dicroic light grey color, invisible under water. It features an excellent abrasion resistance and a controlled stretch this to allow more accurate and longer casts. The absence of elasticity gives the "direct bait control" allowing to have the faster strike capacity you have ever experienced and a bait control. To achieve this results T-Force has developed specific polymers, added an higher tensile and knot strenght. It comes in 150mt spools parallel spooled and individually packed from diameter 0,14 up to 0,30mm.



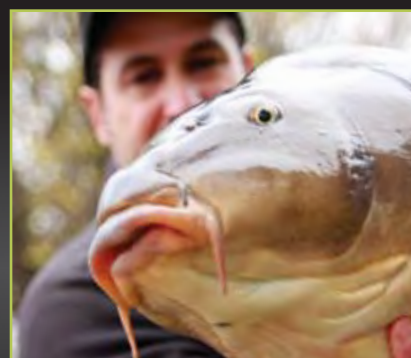
Code	∅	⚖	🐟	150m
053-50-140/10	0.140	2.85	6.28	
053-50-160/10	0.160	3.80	8.37	
053-50-180/10	0.180	4.65	10.24	
053-50-200/10	0.200	5.60	12.36	
053-50-220/10	0.220	7.05	15.53	
053-50-250/10	0.250	8.46	18.63	
053-50-300/10	0.300	12.07	26.59	



# PRO CARP



This monofilament, created by top Anglo-Saxon experts especially for Carp Fishing, is highly abrasion-resistant with great knot strength and a complete absence of memory, combined with low elasticity for rapid hook setting even over long distances. During casting its softness reduces friction with the guides to a minimum, allowing longer, more precise casts. The brown colour gives perfect camouflage. Parallel wound in 300 to 1,000m lengths, and available in 0.25, 0.28, 0.30, 32.0, 0.35 and 0.40mm diameters.



Code	∅	⚖	🐟	300m
053-15-250/5	0.250	8.36	18.41	
053-15-280/5	0.280	9.80	21.59	
053-15-300/5	0.300	11.95	26.32	
053-15-320/5	0.320	13.85	30.51	
053-15-350/5	0.350	15.80	34.80	
053-15-400/5	0.400	21.15	46.59	

Code	∅	⚖	🐟	1000m
053-17-250/5	0.250	8.36	18.41	
053-17-280/5	0.280	9.80	21.59	
053-17-300/5	0.300	11.95	26.32	
053-17-320/5	0.320	13.85	30.51	
053-17-350/5	0.350	15.80	34.80	



## TOURNAMENT TOUGH

Spooled with the system "parallel" that eliminates completely the line torsion during the production process. This version Tournament Tough is particularly soft and with an extraordinary traction strength. It is recommended for fishing with telescopic whips but also for reel fishing for long casts. The color is clear dicroic. Delivered in single box with spools of 150, 300 and 500 mts, with diameters from 0,106 up to 0,50 mm.



Code	∅	⚖	🐟
052-30-100/10	0.106	1.45	3.20
052-30-120/10	0.128	2.10	4.63
052-30-140/10	0.148	2.80	6.18
052-30-160/10	0.165	3.75	8.27
052-30-180/10	0.185	4.60	10.14
052-30-200/10	0.205	5.50	12.13
052-30-220/10	0.220	6.95	15.32
052-30-250/10	0.255	8.40	18.52
052-30-280/10	0.280	9.54	21.03
052-30-300/10	0.300	12.00	26.45
052-30-350/10	0.350	15.85	34.94
052-30-400/10	0.400	20.20	44.53
052-30-450/10	0.450	27.50	60.62
052-30-500/10	0.500	35.00	77.15



052-35-100/5	0.106	1.45	3.20
052-35-120/5	0.128	2.10	4.63
052-35-140/5	0.148	2.80	6.18
052-35-160/5	0.165	3.75	8.27
052-35-180/5	0.185	4.60	10.14
052-35-200/5	0.205	5.50	12.13
052-35-250/5	0.255	8.40	18.52
052-35-300/5	0.300	12.00	26.45

052-37-100/5	0.106	1.45	3.20
052-37-120/5	0.128	2.10	4.63
052-37-140/5	0.148	2.80	6.18
052-37-160/5	0.165	3.75	8.27
052-37-180/5	0.185	4.60	10.14
052-37-200/5	0.205	5.50	12.13
052-37-250/5	0.255	8.40	18.52
052-37-300/5	0.300	12.00	26.45
052-37-350/5	0.350	15.85	34.94
052-37-400/5	0.400	20.20	44.53
052-37-450/5	0.450	27.50	60.62
052-37-500/5	0.500	35.00	77.15

## SUPER CAST

This monofilament has been developed for the reel fishing, such as spinning, for its great flowing capacity. It allows to long distancecasts and it features a superior abrasion resistance than many other monofilament in the market place. The pale green color assures a perfect mimetism into the water. It is available in spools of 150, 300 and 500 mts in single spool box.



Code	∅	⚖	🐟
052-40-120/10	0.128	2.05	4.52
052-40-140/10	0.148	2.76	6.09
052-40-160/10	0.165	3.71	8.18
052-40-180/10	0.185	4.57	10.08
052-40-200/10	0.205	5.42	11.95
052-40-250/10	0.255	8.35	18.41
052-40-300/10	0.300	11.92	26.28
052-40-350/10	0.350	15.79	34.81
052-40-400/10	0.400	20.13	44.37
052-40-450/10	0.450	27.50	60.62
052-40-500/10	0.500	35.00	77.15



052-45-140/5	0.148	2.76	6.09
052-45-160/5	0.165	3.71	8.18
052-45-180/5	0.185	4.57	10.08
052-45-200/5	0.205	5.42	11.95
052-45-250/5	0.255	8.35	18.41
052-45-300/5	0.300	11.92	26.28

052-47-140/5	0.148	2.76	6.09
052-47-160/5	0.165	3.71	8.18
052-47-180/5	0.185	4.57	10.08
052-47-200/5	0.205	5.42	11.95
052-47-250/5	0.255	8.35	18.41
052-47-300/5	0.300	11.92	26.28

## SUPER SOFT

The softest version on T-Force collection with its best use with reels. Its softness allows extra long cast and better bait presentation. Very good also for sea fishing from harbour banks. The warm golden color makes the line visible to angler but is completely invisible down the water.



Code	∅	⚖	🐟
052-55-140/10	0.148	2.76	6.09
052-55-160/10	0.165	3.71	8.18
052-55-180/10	0.185	4.57	10.08
052-55-200/10	0.205	5.42	11.95
052-55-250/10	0.255	8.35	18.41
052-55-300/10	0.300	11.92	26.28
052-55-350/10	0.350	15.79	34.81
052-55-400/10	0.400	20.13	44.37

052-57-140/5	0.148	2.76	6.09
052-57-160/5	0.165	3.71	8.18
052-57-180/5	0.185	4.57	10.08
052-57-200/5	0.205	5.42	11.95
052-57-250/5	0.255	8.35	18.41
052-57-300/5	0.300	11.92	26.28
052-57-350/5	0.350	15.79	34.81
052-57-400/5	0.400	20.13	44.37



## SUPER HARD



Super rigid line, developed for the fishing at long distance, in which is indispensable a direct and immediate contact with the bait. Highly recommended for feeder fishing, carp fishing and spinning. Very high abrasion resistance, a common quality of all T-Force lines, and exceptional knot strength. The color is dark brown and it is parallel spooled.

Code	∅	⚖	🐟	
052-60-250/5	0.255	8.48	18.69	300m
052-60-300/5	0.300	12.15	26.78	
052-60-350/5	0.350	15.95	35.16	
052-60-400/5	0.400	20.30	44.75	

## SPECIAL FEEDER



Specific monofilament for feeder fishing. The colour is dark brown and it is a very rigid line, with a controlled stretch and a high abrasion resistance. It allows the angler to distant and very accurate casts. It can be also used in all kind of bottom fishing as well as for waggler fishing.

Code	∅	⚖	🐟	
052-63-120/10	0.120	2.10	4.63	150m
052-63-140/10	0.140	2.80	6.18	
052-63-160/10	0.160	3.75	8.27	
052-63-180/10	0.180	4.60	10.14	
052-63-200/10	0.200	5.50	12.13	
052-63-220/10	0.220	6.95	15.32	
052-63-250/10	0.250	8.40	18.52	
052-63-300/10	0.300	11.92	26.28	



Raffaele Mapelli



## COMPETITION PRO



Clear diocrio monofilament, available in spools of 25 and 50 mts. Absolutely invisible in water, it has a great smoothness and very high knot strength. It is spooled with the new Japanese style "parallel" that eliminates completely the torsion of the line during the production process, and allows the monofilament to a better flowing during the fishing action. It is ideal for making rigs and hook length, and because the special silicon treatment also for sea fishing. The package is made of an heavy shell that preserves the qualities of the line by the external agents.



Code	∅	⚖	🐟	
052-65-080/10	0.080	0.86	1.90	25m
052-65-100/10	0.100	1.45	3.20	
052-65-120/10	0.120	2.10	4.63	
052-65-140/10	0.140	2.80	6.18	
052-65-160/10	0.160	3.75	8.27	
052-65-180/10	0.180	4.60	10.14	
052-65-200/10	0.200	5.50	12.13	
052-65-220/10	0.220	6.95	15.32	
052-65-250/10	0.250	8.40	18.52	50m
052-65-300/10	0.300	12.00	26.45	
052-70-080/10	0.080	0.86	1.90	
052-70-100/10	0.100	1.45	3.20	
052-70-120/10	0.120	2.10	4.63	
052-70-140/10	0.140	2.80	6.18	
052-70-160/10	0.160	3.75	8.27	
052-70-180/10	0.180	4.60	10.14	
052-70-200/10	0.200	5.50	12.13	
052-70-220/10	0.220	6.95	15.32	
052-70-250/10	0.250	8.40	18.52	
052-70-300/10	0.300	12.00	26.45	

## WINTER ICE



Specific monofilament for the ice fishing or winter fishing in very cold waters. This special polymer has been developed to maintain its qualities of suppleness and resistance with temperatures up to -40 degrees. Coated by the new revolu-

tionary ceramic process that seal the nylon avoiding the water a absorption and also maintaining the suppleness that is heavily harmed by the low temperature. Packed in spools of 25 & 50mts, with an heavy plastic shell that protects the line when stored. Crystal clear colour. Highly recommended also for commercial fisheries in winter.

Code	∅	⚖	🐟	
053-36-080/10	0.080	0.86	1.90	25m
053-36-100/10	0.100	1.45	3.20	
053-36-120/10	0.120	2.10	4.63	
053-36-140/10	0.140	2.80	6.18	
053-36-160/10	0.160	3.75	8.27	
053-36-180/10	0.180	4.60	10.14	
053-36-200/10	0.200	5.50	12.13	
053-36-250/10	0.250	8.40	18.52	
053-36-300/10	0.300	12.00	26.45	
053-35-080/10	0.084	0.86	1.90	
053-35-100/10	0.104	1.45	3.20	
053-35-120/10	0.128	2.10	4.63	
053-35-140/10	0.148	2.80	6.18	
053-35-160/10	0.165	3.75	8.27	
053-35-180/10	0.181	4.60	10.14	

Code	∅	⚖	🐟	
053-35-080/10	0.084	0.86	1.90	50m
053-35-100/10	0.104	1.45	3.20	
053-35-120/10	0.128	2.10	4.63	
053-35-140/10	0.148	2.80	6.18	
053-35-160/10	0.165	3.75	8.27	
053-35-180/10	0.181	4.60	10.14	

# SUPER ISO

**XPS T FORCE**

Saverio Rosa

This version of T-Force has been developed for sea fishing. Extraordinary strength and resistant to abrasion and corrosion due to the salt. Its knot strength had become a legend into the fishing world, and is superior to any other monofilament in the market place. The dark blue color makes it invisible in fishing.

Code	Ø	⚖	🐟
052-50-200/10	0.205	5.45	12.02
052-50-220/10	0.220	6.95	15.32
052-50-250/10	0.255	8.36	18.43
052-50-300/10	0.300	11.94	26.32
052-50-350/10	0.350	15.80	34.83
052-50-400/10	0.400	20.15	44.42
052-50-450/10	0.450	27.50	60.62
052-50-500/10	0.500	34.96	77.06
<b>150m</b>			
052-51-200/5	0.205	5.45	12.02
052-51-250/5	0.255	8.36	18.43
052-51-300/5	0.300	11.94	26.32
052-51-350/5	0.350	15.80	34.83
052-51-400/5	0.400	20.15	44.42
052-51-450/5	0.450	27.50	60.62
052-51-500/5	0.500	34.96	77.06
<b>300m</b>			
052-52-060/2	0.600	35.50	78.25
052-52-070/2	0.700	38.20	84.20
052-52-080/2	0.800	41.70	91.91
052-52-090/2	0.900	48.10	105.95
052-52-100/2	1.000	61.50	135.55
<b>500m</b>			
052-53-200/5	0.205	5.45	12.02
052-53-220/5	0.220	6.95	15.32
052-53-250/5	0.255	8.36	18.43
052-53-280/5	0.280	9.54	21.03
052-53-300/5	0.300	11.94	26.32
052-53-350/5	0.350	15.80	34.83
052-53-400/5	0.400	20.15	44.42
052-53-450/5	0.450	27.50	60.62
052-53-500/5	0.500	34.96	77.06



# DEEP ISO

**T FORCE**

This monofilament has been specifically developed for boat fishing. It is highly visible and soft with a total lack of memory. The special red color is highly visible on the surface for better control of line, while at 10m of depth makes it absolutely invisible to the fish. Deep Iso is particularly resistant to traction and torsion, and can therefore be safely used for trolling. The silicone-based coating makes it waterproof and airtight to combat saltwater marine agents.

Code	Ø	⚖	🐟
052-48-300/6	0.309	11.95	26.32
052-48-350/6	0.354	15.80	34.80
052-48-400/6	0.405	20.30	44.71
052-48-450/6	0.450	27.50	60.57
052-48-500/6	0.500	34.96	77.0
<b>300m</b>			
052-49-300/6	0.309	11.95	26.32
052-49-350/6	0.354	15.80	34.80
052-49-400/6	0.405	20.30	44.71
052-49-450/6	0.450	27.50	60.57
052-49-500/6	0.500	34.96	77.00
<b>600m</b>			



# SPECIAL SEA

**T FORCE**

T-Force mono created and developed with trolling and game fishing in mind. The color is crystal clear, and it has an unbelievable resistance to the abrasion and sea corrosion. This line has virtually no memory, an ideal quality for a trolling line. During the production process it is coated with a special resin treatment in order to seal the polymers and protect the line from salty agents. Supplied with 300mts spools in individual box.

Code	Ø	⚖	🐟
052-36-060/2	0.600	35.50	78.25
052-36-070/2	0.700	38.20	84.20
052-36-080/2	0.800	41.70	91.91
052-36-100/2	1.000	61.50	135.55
<b>300m</b>			



# TEKNO SALTWATER



T-Force XPS Tekno Saltwater is a super high quality nylon mono that is very different from almost any other line on the market. Its molecular structure is organized to avoid stretching and to keep a very good breaking strength. In a nutshell, it performs very close to a braided line, being really sensitive, but still keeping the good qualities of nylon monofilaments, such as a lower friction when passing through the guides and a superior manageability. The crystal blue colour and the silicon surface treatment make this line really perfect for bottom fishing from the boat and spinning.

Code	∅	⚖	🐟	
052-18-200/10	0.203	5.95	13.11	150m
052-18-250/10	0.251	8.67	19.10	
052-18-280/10	0.283	9.98	21.98	
052-18-300/10	0.307	12.72	28.02	
052-18-350/10	0.350	15.90	35.00	
052-18-400/10	0.400	18.17	40.00	300m
052-19-200/6	0.203	5.95	13.11	
052-19-250/6	0.251	8.67	19.10	
052-19-300/6	0.307	12.72	28.02	
052-19-350/6	0.350	15.90	35.00	
052-19-400/6	0.400	18.17	40.00	
052-19-500/6	0.500	22.72	50.00	

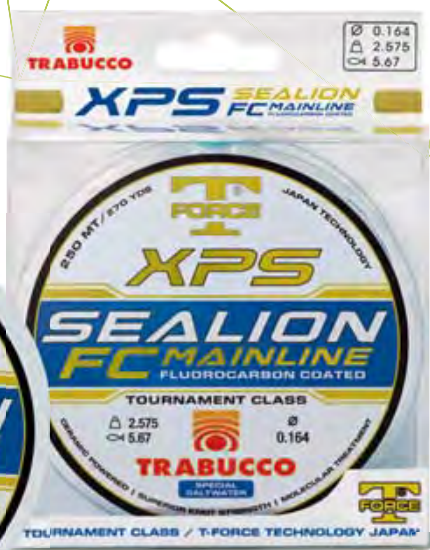


# SEALION



T-Force has been always at the fore front of research and development applied to fishing line and only thanks to this continuous efforts we're able to present this hi-tech line that combines the advantages of the fluorocarbon to the characteristics of T-Force lines. The main features of the fluorocarbon coating are the low-level light refraction which makes it completely invisible in the water, the increased abrasion resistance and the super smooth surface to aid casting distance and accuracy, all combined with a low stretch. It's also totally waterproof to avoid water absorbing and maintain its breaking strength after many hours of use. Whilst the inner core guarantees a great suppleness, high knot strength and memory free. Designed primarily for saltwater fishing, both to be spooled or as a rig and hooklength line.

Code	∅	⚖	🐟	
053-91-160/10	0.164	2.57	5.67	250m
053-91-180/10	0.185	3.21	7.08	
053-91-200/10	0.201	3.85	8.48	
053-91-220/10	0.220	4.41	9.72	
053-91-250/10	0.250	5.87	12.94	
053-91-300/10	0.300	7.73	17.02	
053-91-350/10	0.350	10.96	24.15	
053-91-400/10	0.400	12.13	26.71	



# SPECIAL CASTING



New model that enlarges the T-Force series. As all the other lines of the series, this new Special Casting is parallel spooled, an exclusive production process that completely eliminates the line torsion. This version is hot red coloured, and it is recommended for sea fishing because the red colour is the first colour that disappears into the salt water, due the light refraction. It can be also used in fresh water, for those techniques that require a great line flowing for extra-long casts. Available in spools of 150 and 300mts.

Code	∅	⚖	🐟	
052-25-160/10	0.160	3.71	8.18	150m
052-25-180/10	0.180	4.57	10.08	
052-25-200/10	0.200	5.42	11.95	
052-25-250/10	0.250	8.35	18.41	
052-25-300/10	0.300	11.92	26.28	
052-25-350/10	0.350	15.79	34.81	
052-25-400/10	0.400	20.13	44.37	
052-25-450/10	0.450	27.50	60.62	
052-25-500/10	0.500	34.96	77.06	
052-26-160/5	0.160	3.71	8.18	300m
052-26-180/5	0.180	4.57	10.08	
052-26-200/5	0.200	5.42	11.95	
052-26-250/5	0.250	8.35	18.41	
052-26-300/5	0.300	11.92	26.28	
052-26-350/5	0.350	15.79	34.81	



# FLUOROCARBON

## SALTWATER



Very special Fluorocarbon 100%, super soft and specifically designed for the most challenging techniques in salt water. Vast range of diameters, going from 0.12 to 1.00, in 50 meters spool from 0.12 to 0.50 and in 25 meters wrist spools in bigger diameters. Packaging is really interesting cause inside the PVC trade box, there is another thick plastic box with line retainer to better preserve quality line. Abrasion resistance superior specs you can't do without in saltwater, and close to total invisibility underwater.



Code	∅	⚖	🐟	
053-38-120/10	0.125	1.60	3.52	50m
053-38-140/10	0.145	2.10	4.63	
053-38-160/10	0.164	2.58	5.67	
053-38-180/10	0.185	3.21	7.08	
053-38-200/10	0.201	3.85	8.48	
053-38-220/10	0.220	4.41	9.72	
053-38-250/10	0.250	6.44	14.18	
053-38-280/10	0.280	7.16	15.78	

Code	∅	⚖	🐟	
053-38-300/10	0.300	7.72	17.02	50m
053-38-330/10	0.330	9.40	20.70	
053-38-370/10	0.370	10.97	24.15	
053-38-400/10	0.400	12.13	26.71	
053-38-450/10	0.450	13.67	30.15	
053-38-500/10	0.500	16.68	37.14	

Code	∅	⚖	🐟	
053-38-600/5	0.600	25.49	56.14	25m
053-38-700/5	0.700	30.75	67.73	
053-38-800/5	0.800	39.75	87.56	
053-38-900/5	0.900	45.00	99.12	
053-38-999/5	1.000	57.80	127.31	



## BIG GAME



Excellent big game line, packed in spools of 600 metres to take full advantage of reel's capacity with limited waste or none at all. Its light blue colour, highly dichroic, allows a perfect bait or lure presentation. The multi-layer structure is due to the most advanced Japanese technology: the high strength polymer core is wound by a first layer powered with ceramic components, which are there to bear temperature gaps. A second film takes care of abrasions and keeps out the dangerous UV rays, then the upper coating is made from special silicones which protect the line from salt, of course one of the worst enemies of any fishing line. Both linear and knot strength are particularly brilliant.

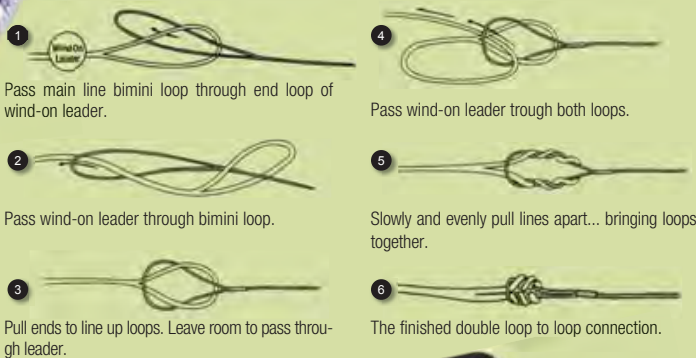
Code	∅	⚖	🐟	
053-07-300/6	0.30	11.34	25.01	600m
053-07-350/6	0.35	15.01	33.09	
053-07-400/6	0.40	19.14	42.20	
053-07-500/6	0.50	26.13	57.60	
053-07-600/6	0.60	33.73	74.35	
053-07-700/6	0.70	36.29	80.01	
053-07-800/6	0.80	39.62	87.34	

## WIND-ON LEADER

\_\_\_\_\_ DYNA TEX **XPS** **T FORCE**

Trabucco's high strength fluorocarbon combined with low stretch Dyna-Tex creates the strongest, most dependable wind-on leader in the world. Trabucco Wind-On Leaders are attached with a loop to loop connection to your fishing line. The wind-on system improves bait presentation, eliminates the need for conventional long leaders and provides safer handling and releasing of fish at the boat.

Code	Ø	⚖	🐟	10m
053-21-030/5	0.58	15	30	
053-21-050/5	0.68	24	50	
053-21-080/5	0.92	37	80	
053-21-100/5	1.02	46	100	
053-21-130/5	1.22	61	135	



## SOFT MAX

\_\_\_\_\_ **XPS** **T FORCE**

When fishing with natural bait or lure, the leader's suppleness can make the difference between the success and failure, because it can afflict bait presentation. Apart from suppleness, one of the most important features are abrasion and shock resistance, which are both offered by this new line. In fact, XPS Soft Max has been tailor made to do that job, also because it's ultra-soft and – at the same time – shows a particularly tough surface which protects the core from aggressive agents and fish's teeth. The remarkable shock resistance comes from the programmed stretching, which helps hook's setting as well as absorb sudden hits like fast bites, which are so common in saltwater fishing. The line is crystal clear and shows a very high knot strength.

Code	Ø	⚖	🐟	50m
053-08-300/10	0.30	11.94	26.32	
053-08-350/10	0.35	15.80	34.83	
053-08-400/10	0.40	20.15	44.42	
053-08-450/10	0.45	24.28	53.53	
053-08-500/10	0.50	27.50	60.63	
053-08-600/10	0.60	35.50	78.26	
053-08-700/10	0.70	38.20	84.22	
053-08-800/5	0.80	41.70	91.93	
053-08-900/5	0.90	45.92	101.24	
053-08-999/5	1.00	50.70	111.77	



## TROLLING

\_\_\_\_\_ **XPS** **T FORCE**

Special monofilament for trolling fishing in saltwater. With a wide range of diameters and 1000 meters spool this monofilament can face any necessity when targeting big fish in the sea. Reduced stretching help to set the hook in any situation and to have total control of the fish during the fight.

Code	Ø	⚖	🐟	1000m
053-18-300/4	0.300	7.25	16	
053-18-350/4	0.350	9.07	20	
053-18-450/4	0.450	13.60	30	
053-18-600/4	0.600	22.67	50	

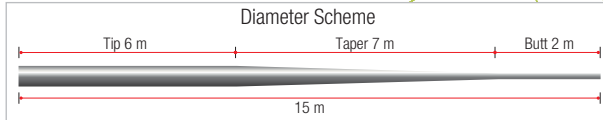


## TAPER LEADER



15 metres tapered leaders designed for surfcasting and beach ledgering. Exceptional abrasion-resistance to ensure prolonged use, and superior resistance to traction. These flexible coupling leaders give superior casting power and ensure the necessary resistance even with heavy sinkers. Each spool contains 10 leaders.

Code	∅	⚖	🐟	
053-71-018/10	0.18-0.40	4.57-20.13	10-45	15mx10pz
053-71-020/10	0.20-0.50	5.42-27.50	12-60	
053-71-180/10	0.18-0.57	4.57-32.50	10-70	
053-71-200/10	0.20-0.57	5.42-32.50	12-70	
053-71-230/10	0.23-0.57	6.95-32.50	15-70	
053-71-260/10	0.26-0.57	8.35-32.50	18-70	



## LONGCAST FLUO



A nice aluminium box is the individual container of this quality line's spool: a touch of fashion but also a reliable protector from aggressive elements during the product's life, on the shop's wall as well as at user's home. The product belongs to a special family of lines, which in Japan is well known and respected by surf casters. Products with a remarkable softness, featuring a silky skin due to a secret silicone treatment. The line runs smoothly through rod's guides, with great advantage in term of casting distance. The second quality point is the high visibility, thanks to the strong colours, and Longcast Fluo follows the trend with its intense and persistent fluo orange, greatly useful in night fishing. A small sticker, applied every 150 metres, enables to draw the best from the huge spool's content.



Code	∅	⚖	🐟	
053-49-180/5	0.181	4.57	10.08	1200m
053-49-200/5	0.203	5.42	11.95	
053-49-220/5	0.221	6.95	15.32	
053-49-250/5	0.251	8.35	18.41	
053-49-280/5	0.283	9.54	21.03	
053-49-300/5	0.307	11.92	26.28	
053-49-350/5	0.350	15.79	34.81	
053-49-400/5	0.400	20.13	44.38	

## SURF DISTANCE



XPS Surf Casting Distance monofilament have some new and important features: the light pink colour used allows to easily detect the line, which is extremely important on this kind of fishing. In the meantime the light pink became barely visible under water, helping in all the situations with suspicious fish. We used a special manufacturing process which makes this line totally safe from saltwater, even after long use. Totally memory free and smooth, this line will make possible to reach extreme casting distance.

Code	∅	⚖	🐟	
053-97-140/10	0.148	2.41	5	300m
053-97-160/10	0.165	3.01	7	
053-97-180/10	0.181	3.61	8	
053-97-200/10	0.203	4.51	10	
053-97-220/10	0.221	5.68	13	
053-97-250/10	0.251	7.03	15	

Code	∅	⚖	🐟	
053-98-140/6	0.148	2.41	5	600m
053-98-160/6	0.165	3.01	7	
053-98-180/6	0.181	3.61	8	
053-98-200/6	0.203	4.51	10	
053-98-220/6	0.221	5.68	13	
053-98-250/6	0.251	7.03	15	

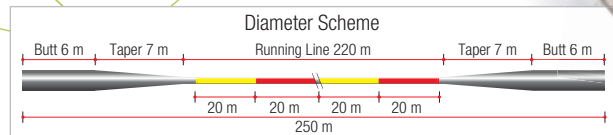


## TAPER LINE



Tapered monofilament especially for surf-casting. Exceptionally resistant to abrasion and traction. The last 15m of this special monofilament are tapered on both sides to act as a flexible coupling leaders so that in the event of prolonged use or breakage of the tapered leader the monofilament can be rewound backwards onto the reel to give a perfect monofilament with tapered leader with flexible coupling again. It is knotless to eliminate the chance of breaking under tension. Sold in 10 x 250m spool packs.

Code	∅	△	♣	
053-75-018/10	0.18-0.40	4.57-20.13	10-45	250m
053-75-020/10	0.20-0.50	5.42-27.50	12-60	
053-75-180/10	0.18-0.57	4.57-27.50	10-60	
053-75-200/10	0.20-0.57	5.42-32.50	12-70	
053-75-230/10	0.23-0.57	6.95-32.50	15-70	
053-75-260/10	0.26-0.57	8.35-32.50	18-70	



## VELVET PRO CAST



Code	∅	△	♣	
052-15-180/6	0.180	3.34	7.00	300m
052-15-200/6	0.200	4.13	9.00	
052-15-220/6	0.220	5.51	12.00	
052-15-250/6	0.250	6.67	15.00	
052-15-280/6	0.280	8.46	19.00	
052-15-300/6	0.300	9.14	20.00	
052-15-350/6	0.350	12.76	28.00	
052-16-180/6	0.180	3.34	7.00	600m
052-16-200/6	0.200	4.13	9.00	
052-16-220/6	0.220	5.51	12.00	
052-16-250/6	0.250	6.67	15.00	
052-16-280/6	0.280	8.46	19.00	
052-16-300/6	0.300	9.14	20.00	
052-16-350/6	0.350	12.76	28.00	



Specially developed for Surf Casting competitions, it's produced in an intense, warm yellow colour which is quite visible both under daylight and during the night, when the head lamp allows to immediately find the real direction taken by the line. Extremely soft, velvet skinned thanks to silicone treatment and without memory, it flows easily out from the reel's spool, allowing long casts and preventing the inexperienced user from creating line tangles. On the knot side, it's easy to pull tightly, even in larger diameters: on the hook's shank as well as on shock leader it creates neat and small knots. The range of diameters is wide enough to satisfy every need of the modern surf caster.

## SPECIAL SEA HI-VIZ



New saltwater monofilament in white colour, available in 300 and 600 meters spool. This monofilament is mainly made for boat fishing but can be used also for fishing from the shore when high visibility lines are required. The special manufacturing process used for this line make it perfect for heavy duty fishing, like when you need to boat the fish as faster as possible or while fishing closer to rocky areas.



Code	∅	△	♣	
053-66-160/6	0.160	2.77	6	300m
053-66-180/6	0.180	3.34	7	
053-66-200/6	0.200	4.13	9	
053-66-220/6	0.220	5.51	12	
053-66-250/6	0.250	6.67	15	
053-66-280/6	0.280	8.46	19	
053-66-300/6	0.300	9.14	20	
053-66-350/6	0.350	12.76	28	
053-67-160/6	0.160	2.77	6	600m
053-67-180/6	0.180	3.34	7	
053-67-200/6	0.200	4.13	9	
053-67-220/6	0.220	5.51	12	
053-67-250/6	0.250	6.67	15	
053-67-280/6	0.280	8.46	19	
053-67-300/6	0.300	9.14	20	
053-67-350/6	0.350	12.76	28	



## SURF CASTING

A surf-casting monofilament extremely soft with a total absence of memory. It allows longer and precise casting of any other monofilaments in the market. The special covering by a new silicone coating, makes it impermeable and unassailable from the sea agents.



Code	∅	⚖	🐟	
053-47-180/6	0.181	4.65	10.24	300m
053-47-200/6	0.203	5.50	12.34	
053-47-220/6	0.228	6.46	14.23	
053-47-250/6	0.255	8.46	18.63	
053-47-280/6	0.282	9.65	21.26	
053-47-300/6	0.309	12.07	26.59	
053-47-350/6	0.350	14.40	31.72	
053-47-400/6	0.400	18.90	41.63	



## LONG CAST



Code	∅	⚖	🐟	
052-80-180/10	0.180	4.55	10.03	150m
052-80-200/10	0.200	5.55	12.24	
052-80-220/10	0.220	6.95	15.32	
052-80-250/10	0.250	8.44	18.61	
052-80-300/10	0.300	12.06	26.58	
052-80-350/10	0.350	15.85	34.94	
052-80-400/10	0.400	20.20	44.53	
052-80-450/10	0.450	27.50	60.62	
052-82-180/5	0.180	4.55	10.03	300m
052-82-200/5	0.200	5.55	12.24	
052-82-220/5	0.220	6.95	15.32	
052-82-250/5	0.250	8.44	18.61	
052-82-300/5	0.300	12.06	26.58	
052-82-350/5	0.350	15.85	34.94	
052-82-400/5	0.400	20.20	44.53	
052-82-450/5	0.450	27.50	60.62	

This line has been developed for those anglers that need to make very long casts. The color fluo-yellow is immediately visible for the angler, but it is almost invisible into the water. This line has a very good flowing qualities, high abrasion resistance and it is super soft, a combination of factors that allow this line to be the best in terms of casting capacity. The very

low elasticity allows the angler to be always in close contact with the bait and transmit an immediate strike on the bite. It is completely waterproof, like all the S-Force monofilaments, and as well as saltproof. Available in spools of 150 and 300 mts in individual box.

## LONG CAST CARP

Monofilament especially developed for long distance night fishing. Thanks to the particular composition and the colour yellow-fluo crayon, results in very high visibility at night or in poor light. This version features good fluidity, thanks to the spooling system and particularly the silicone coating that reduces the resistance allowing longer casts. Low elasticity maintains an immediate contact with the bait and the hooked fish. Excellent abrasion resistance and strength under tension.



Code	∅	⚖	🐟	
052-20-260/5	0.260	8.77	19.32	500m
052-20-280/5	0.280	10.85	24.13	
052-20-300/5	0.300	12.06	26.58	
052-20-320/5	0.320	13.98	30.80	
052-20-350/5	0.350	15.85	32.22	



## SOFT CARP HV

The main characteristic of this mono is the fluorescent green coloration, that makes it visible to the angler in any conditions whilst also maintaining a good low visibility in the water. The surface silicon treatment, drastically reduces line abrasion, guaranteeing a long life duration without equal. The absence of memory and the softness ensure correct and smooth line travel from the spool during casting, enabling longer and more accurate casts. To further improve the performance a new parallel spooling system has been adopted, that eliminates uneven tensions in the production phase.



Code	∅	⚖	🐟	
052-23-260/5	0.260	8.77	19.32	500m
052-23-280/5	0.280	10.85	24.13	
052-23-300/5	0.300	12.06	26.58	
052-23-320/5	0.320	13.98	30.80	
052-23-350/5	0.350	15.85	32.22	





## SINKING



One of the best selling line in Europe for carp-fishing, feeder and waggler fishing. The surface is treated with a special silicon coating that completely seals the line by the water absorption, and the controlled stretch grade allows to immediate strikes even when fishing at long distance. The pastel brown color is perfectly mimetic on all kind of bottom ground type.

Code	Ø	Δ	🐟	
052-95-160/10	0.160	2.10	4.63	150m
052-95-180/10	0.180	2.80	6.18	
052-95-200/10	0.200	3.70	8.16	
052-95-220/10	0.220	6.95	15.32	
052-95-250/10	0.250	8.44	18.61	
052-95-300/10	0.300	9.80	21.60	
052-96-200/5	0.200	3.70	8.16	300m
052-96-250/5	0.250	8.44	18.61	
052-96-280/5	0.280	6.95	15.32	
052-96-300/5	0.300	9.80	21.60	
052-96-320/5	0.320	10.86	24.13	
052-96-350/5	0.350	15.85	34.94	



## MATCH SINKING



One of the best-selling line of the range. The special coating based on silicon, give to this line a great fluidity during the cast, assuring to angler much longer casts and a long lasting. Once experienced one of our S-Force lines, you will never come back to another line. The main features of this particular version is the controlled stretch capacity and the sinking quality, as well as an unbelievable and complete absence of memory. It is a line highly recommended for waggler and feeder fishing. The colour is a very dark blue, nearly black, and it is parallel spooled.

Code	Ø	Δ	🐟	
053-00-120/10	0.120	2.10	4.63	150m
053-00-140/10	0.140	2.80	6.18	
053-00-160/10	0.160	3.70	8.16	
053-00-180/10	0.180	4.55	10.03	
053-00-200/10	0.200	5.55	12.24	
053-00-250/10	0.250	8.44	18.61	
053-00-300/10	0.300	12.06	26.58	



## RIVER TROUT



Code	Ø	Δ	🐟	
052-90-160/10	0.160	3.70	8.16	150m
052-90-180/10	0.180	4.55	10.03	
052-90-200/10	0.200	5.55	12.24	
052-90-220/10	0.220	6.95	15.32	
052-90-250/10	0.250	8.44	18.61	
052-90-280/10	0.280	10.86	24.13	
052-90-300/10	0.300	12.06	26.58	
052-90-350/10	0.350	15.85	35.22	
052-90-400/10	0.400	20.20	44.53	

By the name of this version it is clearly indicated the recommended use. It is an ideal line for spinning, with a pastel milky white colour that allows the angler to follow the bait during the fishing action, but that remain invisible down the water for the particular low grade of

light refraction. The great softness allows the angler to accurate and long casts and the controlled stretch grade keep the contact with the bait always under a direct an immediate control.

## LAKE TROUT



Code	Ø	Δ	🐟	
052-85-160/10	0.160	3.70	8.16	150m
052-85-180/10	0.180	4.55	10.03	
052-85-200/10	0.200	5.55	12.24	
052-85-220/10	0.220	6.95	15.32	
052-85-250/10	0.250	8.44	18.16	

This version of S-Force has been developed for trout fishing with the special style of "bombarda", those special floats typically used in Italy but now spreading in all Europe.

The particular structure gives a very low memory to the line but offers as well a great softness. It is completely waterproof, and it keeps all the technical prerogatives also in extreme cold waters. The color is a new pastel violet, immediately visible out of the water but almost invisible in depth.



## T1 TOURNAMENT

**SUPER ELITE**

This is an evolution of the T1 monofilament, created for the pole fishing. It is highly recommended for the preparation of rigs and hook lengths. It has a high breaking strength, superior to any other line in the market.

Code	∅	⚖	🐟	50m
058-50-060/10	0.060	0.80	1.76	
058-50-070/10	0.070	1.16	2.55	
058-50-080/10	0.080	1.33	2.92	
058-50-090/10	0.090	1.68	3.70	
058-50-100/10	0.100	2.05	4.51	
058-50-110/10	0.110	2.70	5.94	
058-50-120/10	0.120	3.10	6.82	
058-50-140/10	0.140	3.90	8.60	
058-50-160/10	0.160	5.10	11.23	
058-50-180/10	0.180	6.30	13.87	
058-50-200/10	0.200	7.40	16.30	



## T1 FLUORINE



The Super Elite Fluorine is a Japanese monofilament that is made through an exclusive process that is actually able

## T1 CARP FISHERY

**SUPER ELITE**

Another special version of the T1 series, specific for the use in commercial carp fisheries. It has an unbelievable linear strength and knot strength, that remain unchanged also when the line is wet.

Code	∅	⚖	🐟	50m
058-60-100/10	0.100	2.25	4.05	
058-60-110/10	0.110	2.90	6.38	
058-60-120/10	0.120	3.25	7.15	
058-60-140/10	0.140	4.10	9.30	
058-60-160/10	0.160	5.30	11.67	
058-60-180/10	0.180	6.50	14.30	
058-60-200/10	0.200	7.65	16.85	



## T1 MICRO



## SUPER TOURNAMENT

**SUPER ELITE**

New generation monofilament, featuring the highest abrasion resistance available in the market. It is spooled using the new "parallel" Japanese technology, that eliminates the line torsion during the production process. In order to help this particular spooling system we have used



Code	∅	⚖	🐟	150m
058-70-200/10	0.205	5.50	12.13	
058-70-250/10	0.255	8.40	18.52	
058-70-300/10	0.300	12.00	26.45	
058-70-350/10	0.350	15.85	34.94	
058-70-400/10	0.400	20.20	44.53	
058-70-450/10	0.450	27.50	60.62	
058-70-500/10	0.500	35.00	77.15	

a special shaped spool, with a very large diameter, and covered by a lid that protect the line by the sun rays. It is recommended for all uses in fresh or sea fishing in which the reel is used.

Code	∅	⚖	🐟	300m
058-71-200/5	0.205	5.50	12.13	
058-71-250/5	0.255	8.40	18.52	
058-71-300/5	0.300	12.00	26.45	
058-71-350/5	0.350	15.85	34.94	
058-71-400/5	0.400	20.20	44.53	
058-71-450/5	0.450	27.50	60.62	
058-71-500/5	0.500	35.00	77.15	



## CAMO CAST

**SUPER ELITE**

Very rigid mono, created for the long distance fishing, in which is highly important to have a close contact with the bait. Very high abrasion resistant and breaking/knot strength superior to any other similar monofilament.



Code	∅	⚖	🐟	150m
058-80-140/10	0.148	2.80	6.18	
058-80-160/10	0.165	3.75	8.27	
058-80-180/10	0.185	4.60	10.14	
058-80-200/10	0.205	5.50	12.13	
058-80-250/10	0.255	8.40	18.52	
058-80-300/10	0.300	12.00	26.45	
058-80-350/10	0.350	15.85	34.94	
058-80-400/10	0.400	20.20	44.53	
058-80-500/10	0.500	35.00	77.15	

The colour is a mix of light green and violet, that creates a camouflage effect to makes this line invisible on any kind of bottom. It is recommended for feeder, carp fishing and spinning. Spooled with the an extra-large spools to reduce coils.

Code	∅	⚖	🐟	300m
058-81-140/5	0.148	2.80	6.18	
058-81-160/5	0.165	3.75	8.27	
058-81-180/5	0.185	4.60	10.14	
058-81-200/5	0.205	5.50	12.13	
058-81-250/5	0.255	8.40	18.52	
058-81-300/5	0.300	12.00	26.45	
058-81-350/5	0.350	15.85	34.94	
058-81-400/5	0.400	20.20	44.53	
058-81-500/5	0.500	35.00	77.15	



**SUPER ELITE**

to mix deep into the matrix both nylon and fluorocarbon, thus creating a kind of hybrid that can take every advantage from both its components. It features a specific gravity superior to water and it is lower visible underwater than a plain nylon, but not as it can be a 100% fluorocarbon line. At the same time Fluorine is stronger than 100% fluorocarbon but a little weaker if compared to plain nylon.

Code	∅	⚖	🐟	50m
058-58-080/10	0.08	1.150	2.53	
058-58-100/10	0.10	1.700	3.75	
058-58-120/10	0.12	2.300	5.07	
058-58-140/10	0.14	3.350	7.38	
058-58-160/10	0.16	4.290	9.43	
058-58-180/10	0.18	5.380	11.85	
058-58-200/10	0.20	6.500	14.32	

**SUPER ELITE**

Super high quality nylon monofilament, for bolo and rig making, as in the tradition of Super Elite series, with a remarkable high strength that is not harmed from knots. Diameters are guaranteed constant through a continuous electronic check during line extrusion process.

Code	∅	⚖	🐟	100m
058-55-100/10	0.10	1.700	3.75	
058-55-120/10	0.12	2.270	5.00	
058-55-140/10	0.14	3.310	7.30	
058-55-160/10	0.16	4.230	9.30	
058-55-180/10	0.18	5.350	11.80	
058-55-200/10	0.20	6.470	14.20	



**SPECTRUM**  *Diamond*

It is the first monofilament that started the use of the fluorocarbon, since 1996. It is absolutely invisible, soft and with a fantastic knot strength. It is the most used line by match-anglers all over the world.

Code	∅	⚖	🐟	50m
FF 0012 00 08/10	0.080	0.85	1.87	
FF 0012 00 10/10	0.100	1.25	2.76	
FF 0012 00 12/10	0.120	1.75	3.85	
FF 0012 00 14/10	0.140	2.30	5.07	
FF 0012 00 16/10	0.160	2.95	6.51	



**FLUORO CARBON**  *Diamond*

This monofilament is one of the few in the world processed only using pure fluorocarbon. It is soft, abrasion resistant, fast sinking and most of all is totally invisible in the water. The diameters are accurate, ideal for hook lengths. Available in spools of 50m also in big diameters that are almost impossible to find in the market and that are highly recommended for fly and sea fishing.

Code	∅	⚖	🐟	50m
059-10-010/10	0.072	0.53	1.16	
059-10-020/10	0.084	0.77	1.70	
059-10-030/10	0.094	0.92	2.03	
059-10-040/10	0.104	1.08	2.39	
059-10-050/10	0.112	1.35	2.99	
059-10-060/10	0.125	1.75	3.87	
059-10-070/10	0.145	2.00	4.43	
059-10-080/10	0.164	2.80	6.18	
059-10-090/10	0.185	3.30	7.28	
059-10-100/10	0.205	3.80	8.38	
059-10-110/10	0.245	5.20	11.47	
059-10-120/10	0.280	6.70	14.78	
059-10-130/10	0.320	8.20	18.07	
059-10-140/10	0.370	10.30	22.70	

**SINKING**  *Diamond*

Special version developed for the waggler fishing, featuring a total absence of memory. It has a great breaking strength and is very fast sinking. Without any doubt, this is the best sinking line ever produced.

Code	∅	⚖	🐟	500m
FF 0012 05 12	0.120	1.45	3.20	
FF 0012 05 14	0.140	1.95	4.30	
FF 0012 05 15	0.150	2.42	5.34	
FF 0012 05 16	0.160	2.80	6.17	
FF 0012 05 18	0.180	3.40	7.50	

**RACE PRO**

 *Diamond*

This version of Diamond has been developed for those anglers that require a large quantity of line to spool many reels or for rig making. It has a great knot strength and low memory. It is crystal light blue colour.

Code	∅	⚖	🐟	1000m
058-35-100/6	0.100	2.20	4.85	
058-35-120/6	0.120	2.94	6.48	
058-35-140/6	0.140	3.54	7.81	
058-35-160/6	0.160	4.20	9.26	
058-35-180/6	0.180	5.30	11.69	
058-35-200/6	0.200	6.25	13.78	

Code	∅	⚖	🐟	
058-35-220/6	0.220	7.20	15.87	900m
058-35-250/6	0.250	8.15	17.97	850m
058-35-300/6	0.300	10.50	23.15	750m





# MAX PLUS SUPER STRONG

## MAX PLUS ALLROUND

This line can be employed both on the reel and to make rigs, thanks to his low memory and high abrasion resistance. Those factors generate a great knot strength, because knot's coils can be much tightened without risking that they damage each other. Beyond the technical specifications, the Max Plus Allround shows an incredible value for money. The product is suitable for any fishing style, both in fresh and saltwater, and is packed in 150, 300 and 1000 metres spools protected by a special cover which protects line from UV rays and enables the retailer to easily hang them on to the shop's display wall. Colour is light transparent green.



Code	∅	⚖	🐟	
057-00-120/10	0.12	1.50	3.30	150m
057-00-140/10	0.14	2.10	4.63	
057-00-160/10	0.16	2.65	5.84	
057-00-180/10	0.18	3.20	7.05	
057-00-200/10	0.20	4.00	8.81	
057-00-250/10	0.25	5.80	12.78	
057-00-300/10	0.30	8.50	18.72	
057-00-350/10	0.35	10.50	23.13	
057-00-400/10	0.40	13.50	29.74	
057-00-450/10	0.45	15.00	33.06	
057-00-500/10	0.50	18.00	39.68	

Code	∅	⚖	🐟	
057-01-160/10	0.16	2.65	5.84	300m
057-01-180/10	0.18	3.20	7.05	
057-01-200/10	0.20	4.00	8.81	
057-01-250/10	0.25	5.80	12.78	
057-01-300/10	0.30	8.50	18.72	
057-01-350/10	0.35	10.50	23.13	
057-01-400/10	0.40	13.50	29.74	

Code	∅	⚖	🐟	
057-15-160/2	0.16	2.65	5.84	1000m
057-15-180/2	0.18	3.20	7.05	
057-15-200/2	0.20	4.00	8.81	
057-15-250/2	0.25	5.80	12.78	
057-15-300/2	0.30	8.50	18.72	
057-15-350/2	0.35	10.50	23.13	
057-15-400/2	0.40	13.50	29.74	

## NEW MAX PLUS SINKING

The fast sinking tendency is the first feature that is appreciated when using it in the match or feeder fishing, techniques in which the alignment of the line is a very important element for the purposes of bite's indication and also for the neat transmission of force in the strike moment. Max Plus Sinking perfectly answers to all those demands, also offering a special resistance to abrasion arising from the continuous flow through the small rings, by the application of lead shots or from the knots destined to link a shock leader. A definitely strong line, able to bear any mistreatment, offered in the convenient Max Plus spools of 150 meters. Glossy brown colour.



Code	∅	⚖	🐟	
057-20-160/10	0.16	2.65	5.84	150m
057-20-180/10	0.18	3.20	7.05	
057-20-200/10	0.20	4.00	8.81	
057-20-220/10	0.22	4.90	10.79	
057-20-250/10	0.25	5.80	12.78	
057-20-300/10	0.30	8.50	18.72	

## MAX PLUS CARP

Max Plus Carp is a highly specialized line, mainly oriented to big fish hunting thanks to his huge abrasion resistance and knot strength. In addition, the low memory and reduced stretch allow fast and accurate strikes, as well as an improved bite detection. The brown, dichroic colour is quite mimetic in most water environments, thus ideal for big carp fishing. The value for money is really attractive, as well as the packaging; in fact, the product is presented in 150, 300 and 1000 metres spools, with a side shell which filters UV rays and also include the slot destined to hang on to shop's display panel.



Code	∅	⚖	🐟	
057-04-200/10	0.20	4.00	8.81	150m
057-04-220/10	0.22	4.90	10.79	
057-04-250/10	0.25	5.80	12.78	
057-04-280/10	0.28	6.85	15.09	
057-04-300/10	0.30	8.50	18.72	
057-04-350/10	0.35	10.50	23.13	
057-04-400/10	0.40	13.50	29.74	
057-04-450/10	0.45	15.00	33.06	
057-04-500/10	0.50	18.00	39.68	

Code	∅	⚖	🐟	
057-05-200/10	0.20	4.00	8.81	300m
057-05-220/10	0.22	4.90	10.79	
057-05-250/10	0.25	5.80	12.78	
057-05-280/10	0.28	6.85	15.09	
057-05-300/10	0.30	8.50	18.72	
057-05-350/10	0.35	10.50	23.13	
057-05-400/10	0.40	13.50	29.74	

NEW

Code	∅	⚖	🐟	
057-18-200/2	0.20	4.00	8.81	1000m
057-18-220/2	0.22	4.90	10.79	
057-18-250/2	0.25	5.80	12.78	
057-18-300/2	0.30	8.50	18.72	
057-18-350/2	0.35	10.50	23.13	
057-18-400/2	0.40	13.50	29.74	



## MAX PLUS SPECIMEN

The perfect line for match and feeder fishing, designed through a special formula which enabled to get a product featuring high gravity, thus sinking and stiff. The surface treatment provides high abrasion resistance, very low memory and stretch, plus high knot strength. Packed in 150 metres spools, it's protected from UV rays during its shelf life, because the special side protection filters light. The glossy black colour helps the user to see where the fish goes during the fight. The product shows an interesting value for money.



Code	∅	⚖	🐟	
057-06-160/10	0.16	2.65	5.84	150m
057-06-180/10	0.18	3.20	7.05	
057-06-200/10	0.20	4.00	8.81	
057-06-250/10	0.25	5.80	12.78	
057-06-300/10	0.30	8.50	18.72	
057-06-350/10	0.35	10.50	23.13	
057-06-400/10	0.40	13.50	29.74	

## MAX PLUS SPINNING

This new line has been specifically designed for spinning, where it does the job thanks to its very low stretch. This specification generates a greater sensitivity, offering to the user a neat perception of lure movements and contacts with underwater structures, as well as quick and neat strikes, even in difficult conditions. Providing extreme linear strength, at the same time it is particularly soft to ease accurate casting. Coloured in dark green, it's packed in the traditional 150 m spools, featuring a protective shell which keeps UV rays off and includes the hole to hang it on shop's display wall.

Code	∅	⚖	🐟	
057-08-160/10	0.16	2.65	5.84	150m
057-08-180/10	0.18	3.20	7.05	
057-08-200/10	0.20	4.00	8.81	
057-08-250/10	0.25	5.80	12.78	
057-08-300/10	0.30	8.50	18.72	
057-08-350/10	0.35	10.50	23.13	
057-08-400/10	0.40	13.50	29.74	



## MAX PLUS PHANTOM

Phantom is the “ghost” line within Max Plus range. His crystal clear colour makes it almost invisible in water, practically performing like the universal solution for all reel fishing styles, also giving the best in case the straight line is a must (without hooklink). Other relevant merits are high abrasion resistance and knot strength, along with a nice smoothness, always a good asset in term of bait presentation. Undoubtedly, the whole specification list draws the attention of sea boat experts, as they can use it to make perfect multiple hook’s rigs. The line is offered in 150, 300 and 1000 m spools, with a surprising value for money and with a nice cover which acts as UV rays protector and include a slot for the application on to shop’s display boards.



Code	Ø	⚖	🐟	
057-02-120/10	0.12	1.50	3.30	150m
057-02-140/10	0.14	2.10	4.63	
057-02-160/10	0.16	2.65	5.84	
057-02-180/10	0.18	3.20	7.05	
057-02-200/10	0.20	4.00	8.81	
057-02-220/10	0.22	4.90	10.79	
057-02-250/10	0.25	5.80	12.78	
057-02-300/10	0.30	8.50	18.72	
057-02-350/10	0.35	10.50	23.13	
057-02-400/10	0.40	13.50	29.74	
057-02-450/10	0.45	15.00	33.06	
057-02-500/10	0.50	18.00	39.68	

Code	Ø	⚖	🐟	
057-03-180/10	0.18	3.20	7.05	300m
057-03-200/10	0.20	4.00	8.81	
057-03-220/10	0.22	4.90	10.79	
057-03-250/10	0.25	5.80	12.78	
057-03-300/10	0.30	8.50	18.72	
057-03-350/10	0.35	10.50	23.13	
057-03-400/10	0.40	13.50	29.74	

Code	Ø	⚖	🐟	
057-16-180/2	0.18	3.20	7.05	1000m
057-16-200/2	0.20	4.00	8.81	
057-16-220/2	0.22	4.90	10.79	
057-16-250/2	0.25	5.80	12.78	
057-16-300/2	0.30	8.50	18.72	
057-16-350/2	0.35	10.50	23.13	
057-16-400/2	0.40	13.50	29.74	
057-16-500/2	0.50	18.00	39.68	
057-16-600/2	0.60	23.00	50.66	



Ivan Lazovic

## MAX PLUS BOLO

New line featuring an amazing abrasion resistance, thus protected against shot's pressure, rod's guides friction and sliding floats rubbing. In addition, this product is notably soft and memory free, specifications which produce a smooth flow during casting. The wide and soft coils are a real advantage, specially when the rod is wet due to rain or water droplets at sea side, because the contact points are down to the minimum. Max Plus Bolo is packed in the classic 150 m spools, featuring a shell which both allows hanging it to display boards and protects line from sun light. The colour is transparent light purple.



Code	Ø	⚖	🐟	
057-12-140/10	0.14	2.10	4.63	150m
057-12-160/10	0.16	2.65	5.84	
057-12-180/10	0.18	3.20	7.05	
057-12-200/10	0.20	4.00	8.81	
057-12-250/10	0.25	5.80	12.78	
057-12-300/10	0.30	8.50	18.72	

# MAX PLUS SUPER SEA

Coloured in light blue, it's the perfect line for sea fishing, even when water is particularly clear. The extremely high abrasion resistance is further enhanced by a surface treatment which makes it very smooth and protects it from aggressive agents such as sun light and salt water. The outstanding softness also helps knot's tightening, which become very small. Wide range of packing, with standard spools of 150 and 300 m, plus the 1000 m version for the intensive users, all featuring the side shield which include the hole to hang them up on to shop's display boards.



Code	∅	⚖	🐟	
057-10-160/10	0.16	2.65	5.84	150m
057-10-180/10	0.18	3.20	7.05	
057-10-200/10	0.20	4.00	8.81	
057-10-220/10	0.22	4.90	10.79	
057-10-250/10	0.25	5.80	12.78	
057-10-300/10	0.30	8.50	18.72	
057-10-350/10	0.35	10.50	23.13	
057-10-400/10	0.40	13.50	29.74	
057-10-450/10	0.45	15.00	33.06	
057-10-500/10	0.50	18.00	39.68	

Code	∅	⚖	🐟	
057-13-200/10	0.20	4.00	8.81	300m
057-13-220/10	0.22	4.90	10.79	
057-13-250/10	0.25	5.80	12.78	
057-13-300/10	0.30	8.50	18.72	
057-13-350/10	0.35	10.50	23.13	
057-13-400/10	0.40	13.50	29.74	
057-13-500/10	0.50	18.00	39.68	

Code	∅	⚖	🐟	
057-17-200/2	0.20	4.00	8.81	1000m
057-17-220/2	0.22	4.90	10.79	
057-17-250/2	0.25	5.80	12.78	
057-17-300/2	0.30	8.50	18.72	
057-17-350/2	0.35	10.50	23.13	
057-17-400/2	0.40	13.50	29.74	
057-17-500/2	0.50	18.00	39.68	

# NEW MAX PLUS BOLENTINO

One of the oldest sea fishing styles, born with the simple line to hand and then evolved into the modern technique, deserves the attention of a leading brand in the line's field as Trabucco. Intensive field tests made it possible to refine the features of this line displaying a high sensitivity, which comes from reduced elasticity to transmit to rod's tip all the vibrations, the touches, the signals that announce an important catch. The reliability of the Max Plus Boleentino is total, thanks to the high knot strength which is a sound guarantee in front of fights that can be long and challenging. Wide the proposal in terms of packaging, with spools of 150, 300 and 1000 metres. The blue sea colour is just a classic.



Code	∅	⚖	🐟	
057-22-200/10	0.20	4.00	8.81	150m
057-22-220/10	0.22	4.90	10.79	
057-22-250/10	0.25	5.80	12.78	
057-22-300/10	0.30	8.50	18.72	
057-22-350/10	0.35	10.50	23.13	
057-22-400/10	0.40	13.50	29.74	
057-22-500/10	0.50	18.00	39.68	

Code	∅	⚖	🐟	
057-23-200/10	0.20	4.00	8.81	300m
057-23-250/10	0.25	5.80	12.78	
057-23-300/10	0.30	8.50	18.72	
057-23-350/10	0.35	10.50	23.13	
057-23-400/10	0.40	13.50	29.74	
057-23-500/10	0.50	18.00	39.68	

Code	∅	⚖	🐟	
057-24-200/2	0.20	4.00	8.81	1000m
057-24-250/2	0.25	5.80	12.78	
057-24-300/2	0.30	8.50	18.72	
057-24-350/2	0.35	10.50	23.13	
057-24-400/2	0.40	13.50	29.74	
057-24-500/2	0.50	18.00	39.68	

New packaging for 1000 m spool



Saverio Rosa